

ClearBridge Investments, LLC

620 8TH Ave, 48TH Floor
New York, New York 10018

Style: US Large Cap Growth
Sub-Style: Traditional Growth
Firm AUM: \$103.9 billion[^]
Firm Strategy AUM: \$38.8 million^{^^}

Year Founded: 2005
GIMA Status: Focus
Firm Ownership: Legg Mason, Inc.
Professional-Staff: 70^{^^^}

PRODUCT OVERVIEW

The ClearBridge Large Cap Growth ESG Portfolios are designed for investors seeking long-term capital appreciation through investing in large-capitalization companies with the potential for high future earnings growth. The ESG Investment Program actively incorporates environmental, social and governance (ESG) factors into the fundamental research platform and the stock-selection process. In addition, ongoing company engagement and shareholder advocacy are key components of the Program. A few examples of the ESG considerations include: 1) Innovative workplace policies, employee benefits and programs; 2) Environmental management system strength, strategic philanthropy and reputation management; 4) Strong corporate governance and independence on the board. ClearBridge is a signatory to the U.N. Principles for Responsible Investment, and it is affiliated with the Investor Network on Climate Risk, the Carbon Disclosure Project, the Interfaith Center on Corporate Responsibility, the Global Impact Investing Network, the U.N. Environment Program Finance Initiative, and the U.S. Forum for Sustainable and Responsible Investment.

TARGET PORTFOLIO CHARACTERISTICS

Number of stock holdings:	40 to 50
P/E ratio:	Above the S&P 500
Cash level over market cycle:	0 to 5%
Risk (standard deviation):	Below the S&P 500
Average turnover rate:	0 to 22%
Use ADRs:	0 to 25%
Capitalization:	—

PORTFOLIO'S EQUITY SECTOR WEIGHTINGS *

Sector	-----06/20-----		12/19
	ClearBridge	Index***	ClearBridge
	e		e
Energy	0.00	0.08	1.29
Materials	1.81	0.82	4.06
Industrials	10.53	4.62	11.56
Consumer Discretionary	14.70	15.43	10.04
Consumer Staples	5.60	4.83	5.38
Health Care	10.69	15.01	6.38
Financials	1.97	2.10	5.83
Information Technology	37.33	43.90	34.84
Communication Services	12.98	11.14	15.58
Utilities	0.00	0.02	0.00
Cash/Cash Equivalents	0.00	0.00	3.21
Real Estate/REITs	2.03	2.06	1.83

PORTFOLIO STATISTICS

	-----06/20-----		12/19
	ClearBridge	Index***	ClearBridge
	e		e
Number of stock holdings	41	435	43
Dividend Yield	0.9%	0.9%	0.9%
Distribution Rate	—	—	—
Wtd avg P/E ratio ¹	29.01x	33.30x	27.60x
Wtd avg portfolio beta	—	—	—
Mega capitalization ⁺	0.0%	68.1%	0.0%
Large capitalization ⁺	0.0%	27.1%	0.0%
Medium capitalization ⁺	0.0%	4.6%	0.0%
Small capitalization ⁺	0.0%	0.1%	0.0%
Micro capitalization ⁺	0.0%	0.0%	0.0%

PORTFOLIO'S TOP FIVE EQUITY HOLDINGS

	%
Amazon.com Inc	9.1
Microsoft Corp	6.0
Facebook Inc	5.7
Apple Inc	5.0
Visa Inc	4.2

% PROCESS BASED ON

0	Asset allocation - cash vs. stock
10	Industry or sector weighting
90	Stock Selection

MANAGER'S INVESTMENT STRATEGY

- Top-down / portfolio structures based on economic trends
 Bottom-up / portfolio structure based on individual securities

[^]As of 09/30/2015. Information as of 06/30/2020 is not yet available.

^{^^}As of 12/31/2019. Information as of 06/30/2020 is not yet available.

^{^^^}As of 09/30/2019. Information as of 06/30/2020 is not yet available.

¹The P/E used here is calculated by the harmonic mean.

MANAGER'S INVESTMENT PROCESS

- Invest in leadership companies where we believe the market price underestimates the magnitude of future growth
- Use stock selection as the primary driver – identify category leaders with characteristics to sustain that position
- Find secular tailwinds to support multi-year investment opportunities, allowing for compounding of earnings and cash flow
- Perform rigorous analysis to understand company fundamentals, key competitive dynamics and industry structure. Believe that the best business models win over time
- Identify barriers to entry and prefer companies with innovation prowess, regardless of size
- Look for businesses that protect and grow market share consistently
- Gravitate to self-funding business models with significant recurring revenue. Seek businesses with the ability to generate superior free cash flow over time
- Stress test the sustainability of profitability and growth. Take a disciplined approach to valuation
- Step 1: Define initial investment universe –
- Consider companies with market capitalizations similar to those in the S&P 500 Index.
- Step 2: Apply fundamental and business model analysis –
- Identify companies that can sustain high growth rates, have competitive advantages and can maintain sustainable margins.
- Step 3: Utilize key investment valuation measures –
- Select from these candidates those with attractive valuations using measures such as reinvestment and growth rates and discount rate (risk).
- Step 4: Select securities and construct portfolio –
- Identify relevant socially aware considerations for each sector. Compare management culture, programs and corporate policies against "best of class."
- Step 5: Monitor continuously –
- Re-examine a current holding when fundamentals decline, full value is reached or a decline in company's social/environmental performance causes it to violate social screen.

RISK CONSIDERATIONS

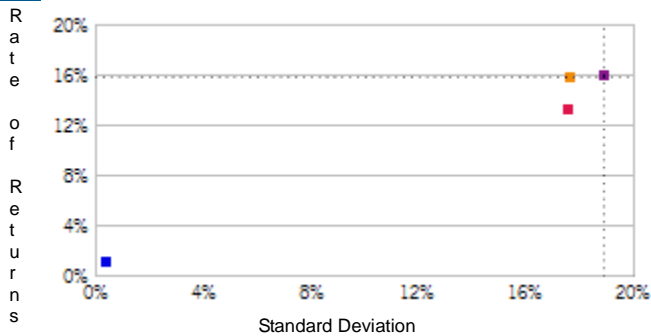
Investing in securities entails risks, including: Equity portfolios are subject to the basic stock market risk that a particular security, or securities in general, may decrease in value. Growth investing does not guarantee a profit or eliminate risk. The stocks of these companies can have relatively high valuations. Because of these high valuations, an investment in a growth stock can be more risky than an investment in a company with more modest growth expectations. Value investing does not guarantee a profit or eliminate risk. Not all companies whose stocks are considered to be value stocks are able to turn their business around or successfully employ corrective strategies which would result in stock prices that do not rise as initially expected. Bonds rated below investment grade may have speculative characteristics and present significant risks beyond those of other securities, including greater credit risk and price volatility in the secondary market. Investors should be careful to consider these risks alongside their individual circumstances, objectives and risk tolerance before investing in high-yield bonds. If a strategy expects to hold a concentrated portfolio of a limited number of securities, it should be noted that a decline in the value of these investments would cause the portfolio's overall value to decline to a greater degree than that of a less concentrated portfolio.

PORTFOLIO'S ALLOCATION HISTORY (%)⁺

	06/20	03/20	12/19	09/19
U.S. Stocks	94	93	92	91
Non-U.S. Stocks	4	3	4	4
Cash/Cash Equivalents	2	4	3	5

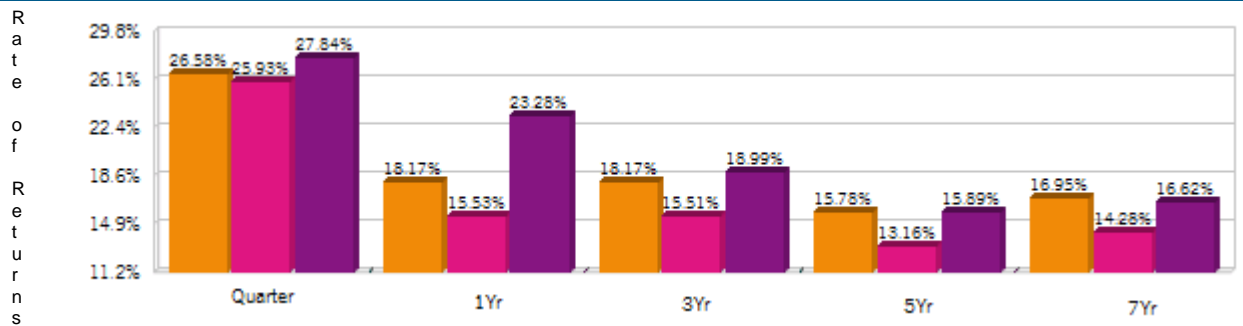
See important notes and disclosures pages for a discussion of the sources of the performance data used to calculate the performance results and related analyses shown above.

RISK/RETURN ANALYSIS - 5 YEARS ENDING 06/30/20



	STD	ROR
ClearBridge (Gross)	17.68	15.78
ClearBridge (Net)	17.62	13.16
Russell 1000 Gr	18.90	15.89
90-Day T-Bills	0.43	1.15

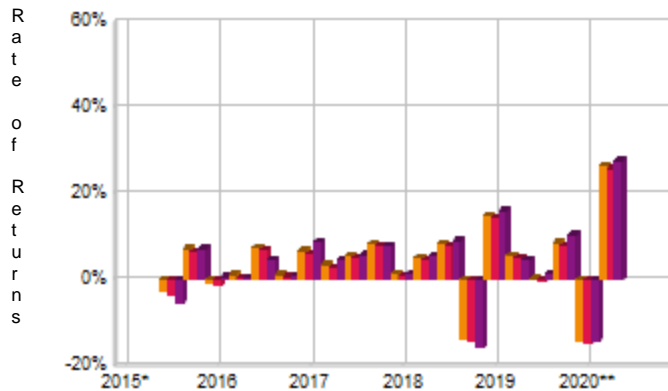
AVERAGE ANNUAL TOTAL RETURN (%) - PERIODS ENDING 06/30/20



INVESTMENT RESULTS

	Annual Rates of Return (%)							7 Year - Ending 06/30/20	
	2013	2014	2015	2016	2017	2018	2019	Annual	Std. Dev.
ClearBridge (Gross)	36.50	15.04	10.01	9.46	26.84	0.06	32.55	16.95	15.14
ClearBridge (Net)	33.44	12.34	7.51	6.90	23.96	-2.24	29.60	14.28	15.09
Russell 1000 Gr	33.49	13.06	5.68	7.08	30.21	-1.51	36.39	16.62	16.26

RISK VOLATILITY (%)



*07/01/15-12/31/15 **01/01/20-06/30/20

	Number Of	Up Qtrs.	Down Qtrs.
ClearBridge (Gross)	16	4	4
ClearBridge (Net)	15	5	5
Russell 1000 Gr	17	3	3

PORTFOLIO'S QUARTERLY RETURNS (%)

	Quarter1		Quarter2		Quarter3		Quarter4	
	Gross	Net	Gross	Net	Gross	Net	Gross	Net
2013	11.13	10.52	3.75	3.15	7.22	6.62	10.41	9.78
2014	1.36	0.75	4.00	3.38	3.47	2.86	5.47	4.86
2015	3.48	2.85	2.04	1.45	-2.86	-3.41	7.25	6.67
2016	-0.71	-1.33	1.23	0.64	7.52	6.92	1.28	0.68
2017	6.81	6.21	3.52	2.92	5.75	5.15	8.48	7.85
2018	1.42	0.86	5.25	4.64	8.52	7.92	-13.62	-14.17
2019	15.08	14.46	5.71	5.12	0.27	-0.31	8.67	8.04
2020	-14.33	-14.82	26.58	25.93				

Related Select UMA

PORTFOLIO'S RISK STATISTICS -€¹ PERIODS ENDING 06/30/20 ^{1 2}

	3 Year	5 Year
Standard Deviation	22.25%	17.68%
Standard Deviation of Primary Benchmark	23.59%	18.90%
Sharpe Ratio	0.74	0.83
Sharpe Ratio of Primary Benchmark	0.73	0.78
Alpha	0.10%	0.82%
Beta	0.94	0.93
Downside Risk	1.77%	1.86%
R-Squared	0.99	0.98
Tracking Error	2.30%	2.83%
Information Ratio	-0.36	-0.04

PORTFOLIO DIVERSIFICATION - R²(INCEPTION THROUGH 12/14)+

	R ²
ClearBridge vs. Russell 1000 Gr	0.98

+Statistics are calculated using gross of fee performance only.

1. Statistics are calculated using gross of fee performance only.
2. Russell 1000 Gr was used as the primary benchmark and the 90-Day T-Bills Index as the risk-free benchmark.

IMPORTANT NOTES AND DISCLOSURES

COMPOSITE DISCLOSURES

The disclosures provided below apply to performance information in this profile, if any. Past performance is not a guarantee of future results. Actual individual account results may differ from the performance shown in this profile. There is no guarantee that this investment strategy will achieve its intended results under all market conditions. Do not rely upon this profile as the sole basis for your investment decisions.

Performance results in this profile are calculated assuming reinvestment of dividends and income. Returns for more than one calendar year are annualized and based on quarterly data. Returns for periods of less than a calendar year show the total return for the period and are not annualized. No representation is being made that any portfolio will or is likely to achieve profits or losses similar to those shown. Returns will fluctuate and an investment upon redemption may be worth more or less than its original value. Performance shown does not reflect the impact of fees and expenses of the underlying mutual fund and ETFs, as applicable.

Sources of Performance Results and Other Data: The performance data and certain other information for this strategy (including the data on page 1 of this profile) may include one or more of the following: (i) the performance results of a composite of Morgan Stanley accounts managed by the third party investment manager, (ii) the performance results for accounts and investment products managed by the third party investment manager, in the same or a substantially similar investment strategy outside of the applicable Morgan Stanley program, and/or (iii) in the case of Model Portfolio Strategies, the Model Portfolio Provider's results in managing accounts outside of the Morgan Stanley Select UMA program prior to Model Portfolio Strategy's inception in the Morgan Stanley Select UMA program. For periods through June 2012, the Fiduciary Services program operated through two channels – the Morgan Stanley channel and the Smith Barney channel and any performance and other data relating to Fiduciary Services accounts shown here for these periods is calculated using accounts in only one of the these channels.) Please note that the Fiduciary Services program was closed on January 2, 2018. Although the Fiduciary Services and Select UMA programs are both Morgan Stanley managed account programs, the performance results and other features of similar investment strategies in the two programs may differ due to investment and operational differences. Performance in one program is not indicative of potential performance in the other. For example, the individual investment strategies in Select UMA program accounts may contain fewer securities, which would lead to a more concentrated portfolio. The automatic rebalancing, wash sale loss and tax harvesting features of the Select UMA program, which are not available in Fiduciary Services, also could cause differences in performance. In addition, any performance results included in this profile that are based on a third party investment manager's accounts that are not part of the Morgan Stanley program accounts or institutional accounts that are part of the Model Portfolio strategy may differ due to investment and operational differences as well. As such, performance results of the third party investment manager's composites and the third party Model Portfolio Strategies may differ from those of Select UMA accounts managed in the same or a substantially similar investment strategy. For example, in the case of Model Portfolio Strategies, Morgan Stanley, as the investment manager, may deviate from the Third Party Model Portfolios.

With respect to those accounts that are subject to the Employee Retirement Income Security Act of 1974 and/or Section 4975 of the Internal Revenue Code of 1986, as amended, and are invested in an investment strategy managed by a Sub-Manager that is an affiliate of MSSB, the Sub-Manager fees will be reduced to 0.00%

Related Performance:

The ClearBridge Large Cap Growth ESG SMA composite consists of discretionary wrap accounts with an account minimum of US \$25,000. The managers actively integrate criteria inclusive of environmental, social and governance (ESG) issues into the portfolio construction of the strategy. Accounts within the composite seek consistent growth of capital while minimizing volatility. Investments are primarily made in U.S. companies, with an objective of outperforming the Russell 1000 Growth Index. The main risks of this strategy are General Investment Risk, ESG Investing Risk, and Non-U.S. Investment Risk. Prior to June 2008, the minimum was \$5,000. Input and Calculation Data: The fee schedule currently in effect is 3.00% on all assets. Net of fee composite returns are calculated by reducing each monthly composite pure gross rate of return by the highest "bundled" fee charged (3.00%) annually, prorated to a monthly ratio. The "bundled" fee includes transaction costs, investment management, custodial, and other administrative fees. As of January 2014, the internal dispersion of annual returns is measured by the asset-weighted standard deviation of portfolio returns included in the composite for the entire year. For prior years, the equal-weighted standard deviation was used. The composite employed a 10% significant cash flow policy which was discontinued in January 2012. Total firm assets for years ending 2006 and 2007 represent the CBI-Retail firm. Effective January 1, 2013, the number of portfolios reflects a change from prior periods due to an aggregation of accounts as reported by one sponsor. A list of composite descriptions is available upon request. Policies for valuing portfolios, calculating performance, and preparing compliant presentations are available upon request.

Morgan Stanley Performance:

Gross Performance: ClearBridge's gross results do not reflect a deduction of any investment advisory fees or program fees, charged by ClearBridge or Morgan Stanley, but are net of commissions charged on securities transactions.

Net Performance for all Periods: Net performance results reflect a deduction of 0.5875% quarterly. This consists of three components: 0.5% maximum quarterly MS Advisory Fee and 0.0175% maximum quarterly Program Overlay Fee (which, together cover the services provided by Morgan Stanley), plus 0.07% quarterly SMA Manager Fees (being the fee currently charged by ClearBridge to new clients for managing their assets in the Select UMA program). The SMA Manager Fees may differ from manager to manager, and managers may change their fee to new clients from time to time. If you select this manager for your account, check the SMA Manager Fees specified in the written client agreement, in case these have changed since you received this profile. Historical net fees reflect the Advisory Fee Schedule as of October 1, 2018. Morgan Stanley program fees are usually deducted quarterly, and have a compounding effect on performance. The Morgan Stanley program fee, which differs among programs and clients, is described in the applicable Morgan Stanley ADV brochure, which is available at www.morganstanley.com/ADV or on request from your Financial Advisor or Private Wealth Advisor. Document approval date December 2016. CRC# Tracking# 1657610

Focus List, Approved List, and Watch Status:

Global Investment Manager Analysis ("GIMA") uses two methods to evaluate investment products in applicable advisory programs. In general, strategies that have passed a more thorough evaluation may be placed on the "Focus List", while strategies that have passed through a different and less comprehensive evaluation process may be placed on the "Approved List". Sometimes an investment product may be evaluated using the Focus List process but then placed on the Approved List instead of the Focus List.

Investment products may move from the Focus List to the Approved List, or vice versa. GIMA may also determine that an investment product no longer meets the criteria under either evaluation process and will no longer be recommended in investment advisory programs (in which case the investment product is given a "Not Approved" status).

GIMA has a "Watch" policy and may describe a Focus List or Approved List investment product as being on "Watch" if GIMA identifies specific areas that (a) merit further evaluation by GIMA and (b) may, but are not certain to, result in the investment product becoming "Not Approved". The Watch period depends on the length of time needed for GIMA to conduct its evaluation and for the investment manager to address any concerns. GIMA may, but is not obligated to, note the Watch status in this report with a "W" or "Watch" on the cover page.

For more information on the Focus List, Approved List, and Watch processes, please see the applicable Morgan Stanley ADV brochure (www.ms.com/adv). Your Financial Advisor or Private Wealth Advisor can provide on request a copy of a paper entitled "GIMA: At A Glance".

ADDITIONAL DISCLOSURES

The information about a representative account is for illustrative purposes only. Actual account holdings, performance and other data will vary depending on the size of an account, cash flows within an account, and restrictions on an account. Holdings are subject to change daily. The information in this profile is not a recommendation to buy, hold or sell securities.

Actual portfolio statistics may vary from target portfolio characteristics.

The Model Portfolio Provider or Investment Manager may use the same or substantially similar investment strategies, and may hold similar portfolios of investments, in other portfolios or products it manages (including mutual funds). These may be available at Morgan Stanley or elsewhere, and may cost an investor more or less than this strategy in Morgan Stanley's Select UMA program.

Overlay Managers or Executing Sub-Managers ("managers") in some of Morgan Stanley's Separately Managed Account ("SMA") programs may affect transactions through broker-dealers other than Morgan Stanley or our affiliates. If your manager trades with another firm, you may be assessed costs by the other firm in addition to Morgan Stanley's fees. Those costs will be included in the net price of the security, not separately reported on trade confirmations or account statements. Certain managers have historically directed most, if not all, of their trades to outside firms. Information provided by managers concerning trade execution away from Morgan Stanley is summarized at: www.morganstanley.com/wealth/investmentsolutions/pdfs/adv/sotresponse.pdf. For more information on trading and costs, please refer to the ADV Brochure for your program(s), available at www.morganstanley.com/ADV, or contact your Financial Advisor/Private Wealth Advisor.

The portfolio may, at times, invest in exchange-traded funds (ETFs), which are a form of equity security in seeking to maintain continued full exposure to the broad equity market.

Morgan Stanley investment advisory programs may require a minimum asset level and, depending on your specific investment objectives and financial position, may not be suitable for you. Investment advisory program accounts are opened pursuant to a written client agreement.

The investment manager acts independently of, and is not an affiliate of, Morgan Stanley Smith Barney LLC.

Diversification does not guarantee a profit or protect against a loss.

No obligation to notify

Morgan Stanley has no obligation to notify you when information in this profile changes.

Sources of information

Material in this profile has been obtained from sources that we believe to be reliable, but we do not guarantee its accuracy, completeness or timeliness. Third party data providers make no warranties or representations relating to the accuracy, completeness or timeliness of the data they provide and are not liable for any damages relating to this data.

No tax advice

Morgan Stanley and its affiliates do not render advice on legal, tax and/or tax accounting matters to clients. Each client should consult his/her personal tax and/or legal advisor to learn about any potential tax or other implications that may result from acting on a particular recommendation.

Not an ERISA fiduciary

Morgan Stanley is not acting as a fiduciary under either the Employee Retirement Income Security Act of 1974, as amended, or under section 4975 of the Internal Revenue Code of 1986, as amended, in providing the information in this profile.

©2019 Morgan Stanley Smith Barney LLC Member SIPC.

INDEX DESCRIPTIONS

90-Day T-Bills

The 90-Day Treasury Bill is a short-term obligation issued by the United States government. T-bills are purchased at a discount to the full face value, and the investor receives the full value when they mature. The difference of discount is the interest earned. T-bills are issued in denominations of \$10,000 auction and \$1,000 increments thereafter.

Russell 1000 Gr

The Russell 1000 Growth Index is representative of the U.S. market for large capitalization stocks containing those companies in the Russell 1000 Index with higher price-to-book ratios and higher forecasted growth.

S&P 500

The S&P 500 Total Return has been widely regarded as the best single gauge of the large cap U.S. equities market since the index was first published in 1957. The index has over \$5.58 trillion benchmarked, with index assets comprising approximately \$1.31 trillion of this total. The index includes 500 leading companies in leading industries of the U.S. economy, capturing 75% coverage of U.S. equities. This index includes dividend reinvestment.

Indices are unmanaged and have no expenses. You cannot invest directly in an index.

GLOSSARY OF TERMS

Alpha is a mathematical estimate of risk-adjusted return expected from a portfolio above and beyond the benchmark return at any point in time.

American Depositary Receipts (ADRs) are receipts for shares of a foreign-based corporation held in the vault of a U.S. bank.

Average Portfolio Beta is a measure of the sensitivity of a benchmark or portfolio's rates of return to changes against a market return. The market return is the S&P 500 Index. It is the coefficient measuring a stock or a portfolio's relative volatility.

Beta is a measure of the sensitivity of a portfolio's rates of return to changes in the market return. It is the coefficient measuring a stock or a portfolio's relative volatility.

Bottom-Up Stock Selection Emphasis primarily on individual stock selection. Considerations of economic and industry factors are of secondary importance in the investment decision-making process.

Capitalization is defined as the following: Mega (Above \$100 billion), Large (\$12 to \$100 billion), Medium (\$2.5 - \$12 billion), Small (\$.50 - \$2.5 billion) and Micro (below \$.50 billion).

Distribution Rate is defined as the most recent distribution paid, annualized, and then divided by the current market price. Distribution rate may consist of investment income, short-term capital gains, long-term capital gains, and /or returns of capital.

Dividend a portion of a company's profit paid to common and preferred shareholders.

Dividend Yield annual dividend per share divided by price per share. Dividend Yield for the portfolio is a weighted average of the results for the individual stocks in the portfolio.

Downside Risk is a measure of the risk associated with achieving a specific target return. This statistic separates portfolio volatility into downside risk and upside uncertainty. The downside considers all returns below the target return, while the upside considers all returns equal to or above the target return.

Duration is a measure of price sensitivity expressed in years.

High Grade Corporate Bonds corporate bonds from issuers with credit ratings of AA or AAA.

Information Ratio is a measure of the investment manager's skill to add active value against a given benchmark relative to how stable that active return has been. Essentially, the information ratio explains how significant a manager's alpha is. Therefore, the higher the information ratio, the more significant the alpha.

Investment Grade Bonds are those rated by Standard & Poor's AAA (highest rated), AA, A or BBB (or equivalent rating by other rating agencies or, in the case of securities not rated, by the investment manager).

Price/Book Ratio (P/B) weighted average of the stocks' price divided by book value per share. Book value per share is defined as common equity, including intangibles, divided by shares outstanding times the adjustment factor.

Price/Cash Flow Ratio a ratio used to compare a company's market value to its cash flow. It is calculated by dividing the company's market cap by the company' operating cash flow in the most recent fiscal year (or the most recent four fiscal quarters); or, equivalently, divide the per-share stock price by the per-share operating cash flow.

Price/Earnings Ratio (P/E Ratio) shows the multiple of earnings at which a stock sells. Determined by dividing current stock price by current earnings per share (adjusted for stock splits). Earnings per share for the P/E ratio are determined by dividing earnings for past 12 months by the number of common shares outstanding. The P/E ratio shown here is calculated by the harmonic mean.

Price/Sales Ratio determined by dividing current stock price by revenue per share (adjusted for stock splits). Revenue per share for the P/S ratio is determined by dividing revenue for past 12 months by number of shares outstanding.

R2 (R-Squared)/Portfolio Diversification indicates the proportion of a security's total variance that is benchmark-related or is explained by variations in the benchmark.

Sharpe Ratio measures the efficiency, or excess return per unit of volatility, of a manager's returns. It evaluates managers' performance on a volatility-adjusted basis.

Standard Deviation is a statistical measure of historical variability or spread of returns around a mathematical average return that was produced by the investment manager over a given measurement period. The higher the standard deviation, the greater the variability in the investment manager's returns relative to its average return.

Top-Down/Economic Analysis Emphasis primarily on macroeconomic trends as opposed to bottom-up stock selection.

Tracking Error represents the standard deviation of the difference between the performance of the investment strategy and the benchmark. This provides a historical measure of the variability of the investment strategy's returns relative to its benchmark.

U.S. Treasury Bonds a marketable, fixed interest U.S. government debt security with a maturity of more than 10 years. Treasury bonds make interest payments semi-annually and the income that holders receive is only taxed at the federal level.

Volatility a measure of risk based on the standard deviation of the asset return. Volatility is a variable that appears in option pricing formulas, where it denotes the volatility of the underlying asset return from now to the expiration of the option. There are volatility indexes. Such as a scale of 1-9; a higher rating means higher risk.