

Machine Learning¹

ACTIVE FUNDAMENTAL EQUITY | COUNTERPOINT GLOBAL | INVESTMENT INSIGHT | 2019

WELCOME TO THE EDGE.

Morgan Stanley Investment Management's Counterpoint Global shares their proprietary views on a big idea that has the potential to trigger far-reaching consequences—ideas such as autonomous vehicles, artificial intelligence, robotics and bioengineering.

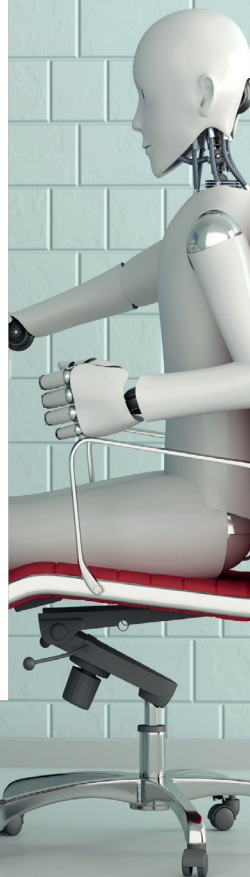
Counterpoint Global's long-term ownership mindset emphasizes perspective, insight and thinking across categories, while our investment process focuses on identifying unique companies with sustainable competitive advantages. Through The EDGE, we share our framework for thinking about change and our process for recognizing patterns that may drastically alter the investment landscape over the longer term.

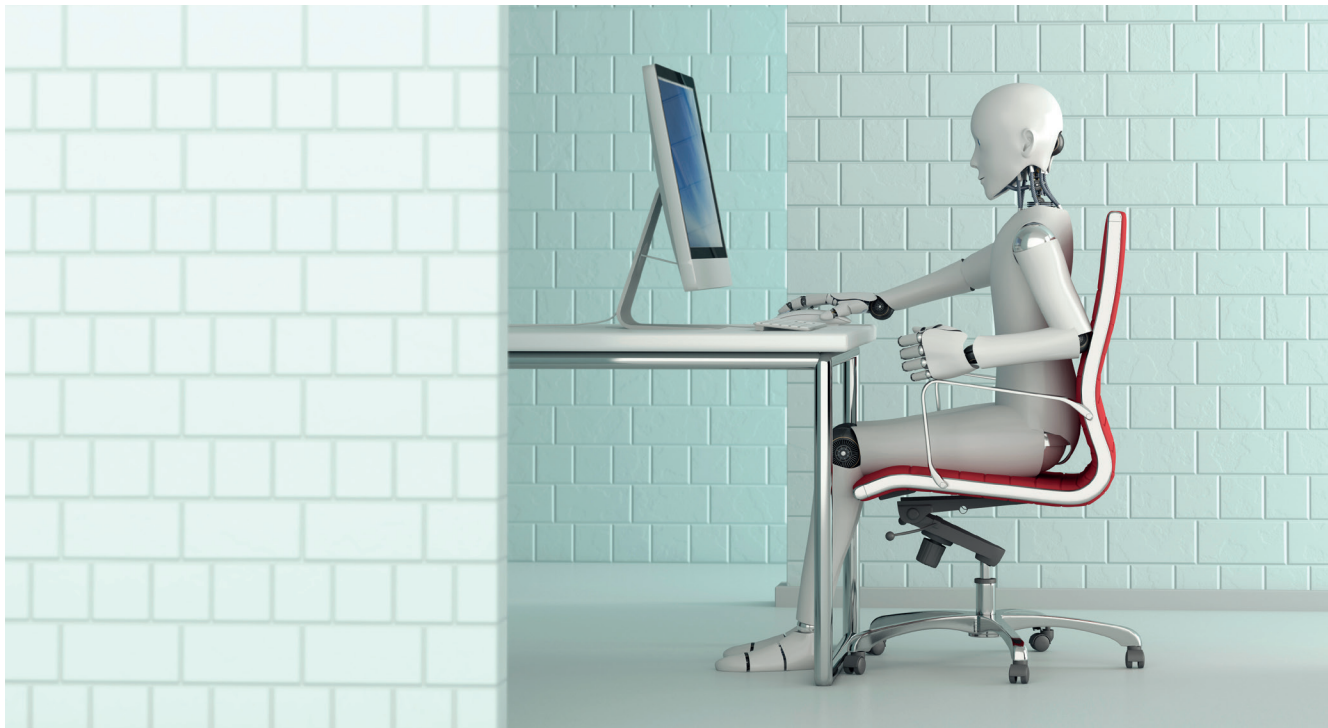
This work complements our team's more traditional, fundamental research to create a framework for long-term investing that is grounded in intellectual curiosity and flexibility, perspective, self-awareness and partnership.

Machine learning is a way to train computer systems to generate useful insights from data sets and apply those insights to new situations. This has the potential to revolutionize many fields, such as medical diagnoses and driving, by excising human discretion and error from the process. Although iterations of this technology have been around since the 1950s, in recent years the explosion of collected data, combined with an increase in computing power, has increased the abilities of this disruptive technology.

Machine learning describes a process by which computer scientists feed large sets of curated data to a computer in order to train it to deal with new situations. The computer “learns” by discovering complex patterns and relationships between the inputs and outputs in the dataset on which it has been trained. The relationships discovered by the computer are then applied to new data, allowing the computer to make useful predictions based on that new data. ►

¹ This was written by a human. ← So was this.





► For instance, a computer that is given millions of labeled pictures of faces and then presented with a set of new photos that include both faces and non-faces could identify which pictures contain faces. The important difference versus traditional computing is that the computer is not programmed, but rather trained with data. This requires a large number of examples.

One popular method of machine learning uses neural networks. These networks consist of individual nodes (“neurons”) that continually recalibrate themselves with each example so that the input data correlates with the correct output as it passes through the computer algorithm. What a neural network is trying to do is create the best set of “rules” to describe the data so that the computer can use those “rules” to make useful predictions in new, but related, situations. Often, the machine-learning process is a black box, where the exact method is not cognizable by humans and therefore requires significant testing to ensure that the system’s predictions are accurate.

The opportunities here are immense—this form of artificial intelligence has the potential to breed new industries and create efficiencies in existing ones. One of the most studied applications of machine learning is in the medical field. Instead of training a computer to recognize patterns in faces or handwriting, medical researchers in conjunction with computer scientists are training computers to recognize patterns in medical images to detect illnesses like cancer. Preliminary research

in this area makes a compelling case that algorithms are better than pathologists or radiologists at spotting cancer.

Autonomous vehicles are another dynamic field that relies on machine learning. The cause of most accidents on the road today—over 90 percent—is driver error. Machine learning promises to reduce traffic fatalities by removing human error from the equation. Developing an autonomous vehicle requires training it on data collected from billions of miles of driving. This data

that it reaches accurate conclusions. For instance, a rare disease might not have enough cases to provide a computer with a sufficiently large sample set on which to train. Second, given the “black box” nature of the computer’s decision-making, adequate testing to ensure the computer’s insights are accurate could prove challenging—the more life-critical the application, the more testing it requires. If a language translation application makes an error, it isn’t as problematic as if an autonomous car fails to

This form of artificial intelligence has the potential to breed new industries and create efficiencies in existing ones.

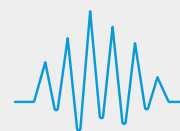
includes everything from images of the road, to GPS signals that give the position of the car, to the decisions drivers make. Once trained, an autonomous vehicle uses a suite of sensors to continuously gather data about its surroundings. Using that data and the insights gathered from its training, it then determines the best way to drive the car given the constraints of its environment.

To be sure, there are a number of technological, regulatory and social factors that could impede adoption. First, for a given application, there may not be enough data available to train the computer to ensure

recognize a stop sign. Third, regulators and legislators could look askance at disruptive technologies. Incumbent industries can seek new regulations and other protections that raise the costs of starting new businesses and protect incumbents from new entrants, especially in already regulated fields like medicine or transportation. Finally, humans may not trust machine learning solutions in certain areas of their lives. It may simply be a human prerogative that they would prefer being treated by a human doctor or trust their own judgement more than a computer’s when it comes to driving.

As these technologies begin to be tested and adopted, however, these concerns will be ameliorated. One example is next generation online translation. Given the millions of examples of translations that could be used as training, Google switched to neural networks for its translation application in 2016. For other applications that could impact human safety, there is a more cautious and slower path to adoption. For instance, the technology to drive cars autonomously exists today, but

it will take four to five more years of testing to ensure their safety before we could see cars without drivers on our roads. Medical applications could take as long, if not longer. Ultimately, lower accident rates and fewer missed diagnoses will be demanded by society if technologically possible. This does not mean that the road to algorithmic industries is a straight and smooth one, but rather that there is an underlying impetus for its existence.



OTHER DISRUPTORS

Other themes the team is currently researching include

- Blockchain
- Virtual/Augmented Reality
- Autonomous Vehicles

Risk Considerations

There is no assurance that a Portfolio will achieve its investment objective. Portfolios are subject to **market risk**, which is the possibility that the market values of securities owned by the Portfolio will decline and that the value of Portfolio shares may therefore be less than what you paid for them. Accordingly, you can lose money investing in this Portfolio. Please be aware that this Portfolio may be subject to certain additional risks. In general, **equities securities'** values also fluctuate in response to activities specific to a company. Investments in **foreign markets** entail special risks such as currency, political, economic, market and liquidity risks. The risks of investing in **emerging market countries** are greater than risks associated with investments in foreign developed countries. **Privately placed and restricted securities** may be subject to resale restrictions as well as a lack of publicly available information, which will increase their illiquidity and could adversely affect the ability to value and sell them (liquidity risk). **Derivative instruments** may disproportionately increase losses and have a significant impact on performance. They also may be subject to counterparty, liquidity, valuation, correlation and market risks. **Illiquid securities** may be more difficult to sell and value than public traded securities (liquidity risk).

Counterpoint Global

Counterpoint Global Team

DENNIS LYNCH, Head of Counterpoint Global

New York

INVESTORS	RESEARCH RESPONSIBILITIES	YEARS OF EXPERIENCE	YEARS WITH FIRM	YEARS WITH TEAM
DENNIS LYNCH	Lead Investor	25	21	21
SAM CHAINANI	Communication Services, Financials, Internet	23	23	19
JASON YEUNG	Health Care	22	17	15
ARMISTEAD NASH	Business Services, Software	19	17	15
DAVID COHEN	Consumer	31	26	20
ALEX NORTON	Consumer, Industrials, Technology (ex Software)	24	19	19
THOMAS KAMEI	Internet, ESG	7	7	7
MANAS GAUTAM	Generalist	7	4	4
ANNE EDELSTEIN	Health Care	8	1	1
ABHIK KUMAR	Business Services, Software	10	<1	<1

DISRUPTIVE CHANGE RESEARCH

STAN DELANEY	Big Ideas, Emerging Themes	18	18	15
SASHA COHEN	Big Ideas, Emerging Themes	2	2	2

CLIENT RELATIONSHIP AND BUSINESS MANAGEMENT

MARK TODTFELD	Chief Operating Officer	24	14	<1
MARY SUE MARSHALL	Portfolio Specialist	39	19	19
PRAJAKTA NADKARNI	Portfolio Specialist	15	12	8
MCKENZIE BURKHARDT	Portfolio Specialist	16	16	16
EARL PRYCE	Portfolio Administrator	19	19	12
ROBERT ROSS	Portfolio Administrator	27	22	2

Global Opportunity Team

Hong Kong

KRISTIAN HEUGH, Lead Investor Global, International, Asia

- 5 Investors
- 2 Portfolio Specialists

"Investor" refers to an analyst or portfolio manager of Counterpoint Global.

Team members may change without notice from time to time. Years of Experience listed above refers to Industry Experience.

Years of Experience, Years with Firm and Years with Team are as of June 2019.

DISTRIBUTION

This communication is only intended for and will only be distributed to persons resident in jurisdictions where such distribution or availability would not be contrary to local laws or regulations.

Ireland: Morgan Stanley Investment Management (Ireland) Limited. Registered Office: The Observatory, 7-11 Sir John Rogerson's, Quay, Dublin 2, Ireland. Registered in Ireland under company number 616662. Regulated by the Central Bank of Ireland.

United Kingdom: Morgan Stanley Investment Management Limited is authorised and regulated by the Financial Conduct Authority. Registered in England. Registered No. 1981121. Registered Office: 25 Cabot Square, Canary Wharf, London E14 4QA. **Dubai:** Morgan Stanley Investment Management Limited (Representative Office, Unit Precinct 3-7th Floor-Unit 701 and 702, Level 7, Gate Precinct Building 3, Dubai International Financial Centre, Dubai, 506501, United Arab Emirates. Telephone: +97 (0)14 709 7158).

Germany: Morgan Stanley Investment Management Limited Niederlassung Deutschland 4th Floor Junghofstrasse 18-26, 60311 Frankfurt am Main, Germany (Gattung: Zweigniederlassung (FDI) gem. § 53b KWG). **Italy:** Morgan Stanley Investment Management Limited, Milan Branch (Sede Secondaria di Milano) is a branch of Morgan Stanley Investment Management Limited, a company registered in the UK, authorised and regulated by the Financial Conduct Authority (FCA), and whose registered office is at 25 Cabot Square, Canary Wharf, London, E14 4QA. Morgan Stanley Investment Management Limited Milan Branch (Sede Secondaria di Milano) with seat in Palazzo Serbelloni Corso Venezia, 16 20121 Milano, Italy, is registered in Italy with company number and VAT number 08829360968.

The Netherlands: Morgan Stanley Investment Management, Rembrandt Tower, 11th Floor Amstelplein 1 1096HA, Netherlands. Telephone: 31 2-0462-1300. Morgan Stanley Investment Management is a branch office of Morgan Stanley Investment Management Limited. Morgan Stanley Investment Management Limited is authorised and regulated by the Financial Conduct Authority in the United Kingdom.

Switzerland: Morgan Stanley & Co. International plc, London, Zurich Branch Authorised and regulated by the Eidgenössische Finanzmarktaufsicht ("FINMA"). Registered with the Register of Commerce Zurich CHE-115.415.770. Registered Office: Beethovenstrasse 33, 8002 Zurich, Switzerland, Telephone +41 (0) 44 588 1000. Facsimile Fax: +41(0)44 588 1074.

U.S.: A separately managed account may not be suitable for all investors. Separate accounts managed according to the Strategy include a number of securities and will not necessarily track the performance of any index. Please consider the investment objectives, risks and fees of the Strategy carefully before investing. A minimum asset level is required. For important information about the investment manager, please refer to Form ADV Part 2.

Please consider the investment objectives, risks, charges and expenses of the funds carefully before investing. The prospectuses contain this and other information about the funds. To obtain a prospectus please download one at morganstanley.com/im or call 1-800-548-7786. Please read the prospectus carefully before investing.

Morgan Stanley Distribution, Inc. serves as the distributor for Morgan Stanley Funds.

NOT FDIC INSURED | OFFER NO BANK GUARANTEE | MAY LOSE VALUE | NOT INSURED BY ANY FEDERAL GOVERNMENT AGENCY | NOT A BANK DEPOSIT

Hong Kong: This document has been issued by Morgan Stanley Asia Limited for use in Hong Kong and shall only be made available to "professional investors" as defined under the Securities and Futures Ordinance of Hong Kong (Cap 571). The contents of this document have not been reviewed nor approved by any regulatory authority including the Securities and Futures Commission in Hong Kong. Accordingly, save where an exemption is available under the relevant law, this document shall not be issued, circulated, distributed, directed at, or made available to, the public in Hong Kong.

Singapore: This document should not be considered to be the subject of an invitation for subscription or purchase, whether directly or indirectly, to the public or any member of the public in Singapore other than (i) to an institutional investor under section 304 of the Securities and Futures Act, Chapter 289 of Singapore ("SFA"), (ii) to a "relevant person" (which includes an accredited investor) pursuant to section 305 of the SFA, and such distribution is in accordance with the conditions specified in section 305 of the SFA; or (iii) otherwise pursuant to, and in accordance with the conditions of, any other applicable provision of the SFA. This material has not been reviewed by the Monetary Authority of Singapore. **Australia:** This publication is disseminated in Australia by Morgan Stanley Investment Management (Australia) Pty Limited ACN: 122040037, AFSL No. 314182, which accepts responsibility for its contents. This publication, and any access to it, is intended only for "wholesale clients" within the meaning of the Australian Corporations Act.

Japan: For professional investors, this document is circulated or distributed for informational purposes only. For those who are not professional investors, this document is provided in relation to Morgan Stanley Investment Management (Japan) Co., Ltd. ("MSIM")'s business with respect to discretionary investment management agreements ("IMA") and investment advisory agreements ("IAA"). This is not for the purpose of a recommendation or solicitation of transactions or offers any particular financial instruments. Under an IMA, with respect to management of assets of a client, the client prescribes basic management policies in advance and commissions MSIM to make all investment decisions based on an analysis of the value, etc. of the securities, and MSIM accepts such commission. The client shall delegate to MSIM the authorities necessary for making investment. MSIM exercises the delegated authorities based on investment decisions of MSIM, and the client shall not make individual instructions. All investment profits and losses belong to the clients; principal is not guaranteed. Please consider the investment objectives and nature of risks before investing. As an investment advisory fee for an IAA or an IMA, the amount of assets subject to the contract multiplied by a

certain rate (the upper limit is 2.16% per annum (including tax)) shall be incurred in proportion to the contract period. For some strategies, a contingency fee may be incurred in addition to the fee mentioned above. Indirect charges also may be incurred, such as brokerage commissions for incorporated securities. Since these charges and expenses are different depending on a contract and other factors, MSIM cannot present the rates, upper limits, etc. in advance. All clients should read the Documents Provided Prior to the Conclusion of a Contract carefully before executing an agreement. This document is disseminated in Japan by MSIM, Registered No. 410 (Director of Kanto Local Finance Bureau (Financial Instruments Firms)), Membership: the Japan Securities Dealers Association, The Investment Trusts Association, Japan, the Japan Investment Advisers Association and the Type II Financial Instruments Firms Association.

IMPORTANT INFORMATION

EMEA: This marketing communication has been issued by Morgan Stanley Investment Management Limited ("MSIM"). Authorised and regulated by the Financial Conduct Authority. Registered in England No. 1981121. Registered Office: 25 Cabot Square, Canary Wharf, London E14 4QA.

There is no guarantee that any investment strategy will work under all market conditions, and each investor should evaluate their ability to invest for the long-term, especially during periods of downturn in the market. Prior to investing, investors should carefully review the strategy's / product's relevant offering document. There are important differences in how the strategy is carried out in each of the investment vehicles.

A separately managed account may not be suitable for all investors. Separate accounts managed according to the Strategy include a number of securities and will not necessarily track the performance of any index. Please consider the investment objectives, risks and fees of the Strategy carefully before investing.

The views and opinions are those of the author or the investment team as of the date of preparation of this material and are subject to change at any time due to market or economic conditions and may not necessarily come to pass. Furthermore, the views will not be updated or otherwise revised to reflect information that subsequently becomes available or circumstances existing, or changes occurring, after the date of publication. The views expressed do not reflect the opinions of all investment teams at Morgan Stanley Investment Management (MSIM) or the views of the firm as a whole, and may not be reflected in all the strategies and products that the Firm offers.

Forecasts and/or estimates provided herein are subject to change and may not actually come to pass. Information regarding expected market returns and market outlooks is based on the research, analysis and opinions of the authors. These conclusions are speculative in nature, may not come to pass and are not intended to predict the future performance of any specific Morgan Stanley Investment Management product.

Certain information herein is based on data obtained from third party sources believed to be reliable. However, we have not verified this information, and we make no representations whatsoever as to its accuracy or completeness.

The information herein is a general communications which is not impartial and has been prepared solely for information and educational purposes and does not constitute an offer or a recommendation to buy or sell any particular security or to adopt any specific investment strategy. The material contained herein has not been based on a consideration of any individual client circumstances and is not investment advice, nor should it be construed in any way as tax, accounting, legal or regulatory advice. To that end, investors should seek independent legal and financial advice, including advice as to tax consequences, before making any investment decision.

Past performance is no guarantee of future results.

Charts and graphs provided herein are for illustrative purposes only.

This communication is not a product of Morgan Stanley's Research Department and should not be regarded as a research recommendation. The information contained herein has not been prepared in accordance with legal requirements designed to promote the independence of investment research and is not subject to any prohibition on dealing ahead of the dissemination of investment research.

The information contained in this communication is not a research recommendation or 'investment research' and is classified as a 'Marketing Communication' in accordance with the applicable European regulation or Swiss regulation. This means that this marketing communication (a) has not been prepared in accordance with legal requirements designed to promote the independence of investment research (b) is not subject to any prohibition on dealing ahead of the dissemination of investment research.

MSIM has not authorized financial intermediaries to use and to distribute this document, unless such use and distribution is made in accordance with applicable law and regulation. MSIM shall not be liable for, and accepts no liability for, the use or misuse of this document by any such financial intermediary. If you are a distributor of the Morgan Stanley Investment Funds, some or all of the funds or shares in individual funds may be available for distribution. Please refer to your sub-distribution agreement for these details before forwarding fund information to your clients.

The whole or any part of this work may not be reproduced, copied or transmitted or any of its contents disclosed to third parties without MSIM's express written consent.

All information contained herein is proprietary and is protected under copyright law.

Morgan Stanley Investment Management is the asset management division of Morgan Stanley.

This document may be translated into other languages. Where such a translation is made this English version remains definitive. If there are any discrepancies between the English version and any version of this document in another language, the English version shall prevail.

Explore our site at www.morganstanley.com/im