

Counterpoint Global Insights

CAR-T Therapy

EDGE | AUGUST 2020

WELCOME TO THE EDGE.

Morgan Stanley Investment Management's Counterpoint Global shares their proprietary views on a big idea that has the potential to trigger far-reaching consequences—ideas such as blockchain, autonomous vehicles, machine learning and gene editing.

Counterpoint Global's long-term ownership mindset emphasizes perspective, insight and thinking across categories, while our investment process focuses on identifying unique companies with sustainable competitive advantages. Through The EDGE, we share our framework for thinking about change and our process for recognizing patterns that may drastically alter the investment landscape over the longer term.

This work complements our team's more traditional, fundamental research to create a framework for long-term investing that is grounded in intellectual curiosity and flexibility, perspective, self-awareness and partnership.

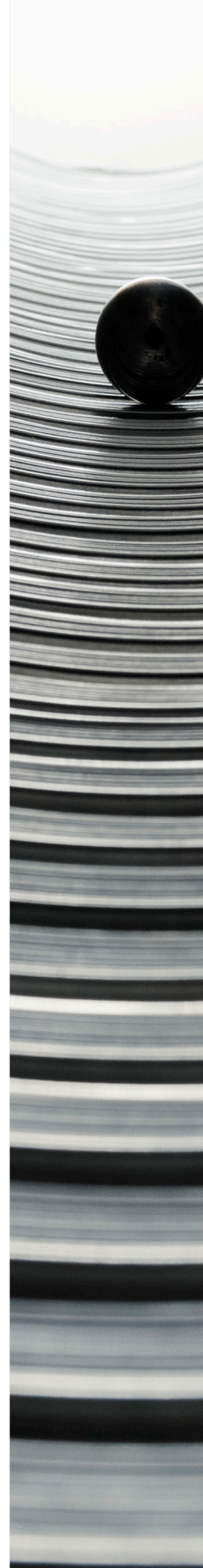
Stem cell based cellular therapy

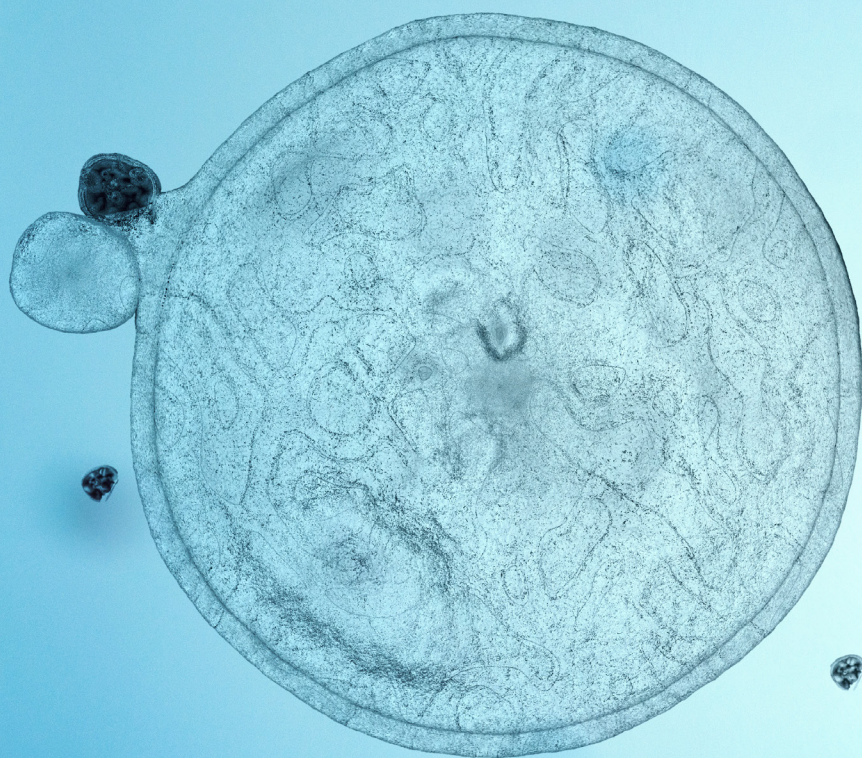
Genetically engineered cellular therapy is one of the most complex cancer therapies ever invented and has forever changed the survival outcome expectations for patients with blood cancer. Chimeric antigen receptor T (or CAR-T) cell therapy programs the patient's own immune system to attack cancer. Tumor immunologists long hoped that the immune system could be a key to curing cancer and after years of toiling in the lab, CAR-T therapy finally made this dream a reality. But despite demonstrating impressive results in blood cancers, this first generation therapy has low utilization because of high costs, complexity of treatment, and severe toxicities.

The next generation of cellular therapy has the potential to revolutionize cancer treatment. Cellular therapy based on stem cells could disrupt the current marketplace by decreasing costs and increasing the addressable market, while mimicking the impressive survival statistics we currently see with first generation therapy in patients receiving late-line treatment.

The natural immune response is complicated. A healthy immune system requires the intricate coordination of

The views and opinions and/or analysis expressed herein are those of the investment team as of the date of preparation of this material, are subject to change at any time without notice due to market or economic conditions, and may not necessarily come to pass.





multiple components. This system is prone to breakdown, which can lead to the development of various illnesses that include cancer. CAR-T cell therapy seeks to simplify this process by genetically engineering a patient's own cells to efficiently and effectively target and eliminate cancer. Doctors do this by removing T cells, our body's foremost fighter, from a cancer patient. They then genetically engineer the cells to express a key (or a receptor) that specifically recognizes a tumor's lock (or antigen) (*Display 1*). The genetically-engineered cells are returned to the patient. Meeting their match triggers the cells to carry out cellular processes that kill the tumor cells. Because this manufacturing process is lengthy, inconsistent, and complex, patients unable to wait for this therapy's development have limited success.

While the clinical results have been staggering (doubling to tripling the response to standard therapy, *Display 2*), initial uptake of approved therapies has been underwhelming. We believe that next generation cellular therapy will need to overcome three key challenges to increase access and expand the market potential. First, cellular therapy

Stem cell based cellular therapy is disruptive because it has the potential to address the main challenges of first generation therapy while maintaining the impressive survival rate observed in cancer patients receiving late-line treatment.

has failed in solid tumors (non-blood or liquid tumors) which remain an unmet medical need and represent over 80% of cancer deaths. Second, high costs of therapy and complex manufacturing are a hindrance to use. Lastly, severe toxicities including an immune response triggered whole-body attack (known as cytokine release syndrome) and neurotoxicity have plagued early generations of therapy. The cost of treating side effects, unwanted or unexpected events or reactions to a drug, and lengthy hospital stays create a financial burden.

Multiple next-generation approaches are under development that address the issues with first generation therapy and have the potential to revolutionize

cancer treatment. A second generation approach uses CAR-T cells that are manufactured ahead of time from healthy donors rather than the bespoke manufacturing of the cells of an ill cancer patient. This approach is known as allogeneic CAR-T therapy and is disruptive because it has the potential to reduce complexity, time to treatment, and accessibility.

As promising as allogeneic CAR-T is, the fact remains that healthy donors are inherently diverse, making therapy inconsistent and irreproducible.

To overcome this hurdle, scientists pursuing a third generation CAR-T can use stem cells which allow for the development of a well-characterized,

uniform, and ready-to-use cellular therapy. The upfront drug discovery and development is complex for cellular therapy based on stem cells but advances in genomic sequencing and editing techniques have made this technology more viable in cancer treatment. We believe the use of stem cells could convert a complicated therapeutic process into a manageable product. This would lower the cost of therapy and expand the addressable market.

Here’s a sketch of how cellular therapy based on stem cells works. Scientists begin with healthy donors and create induced pluripotent stem cells (iPSC). These are cells, often taken from the skin, that have been reprogrammed back to an embryonic-like state to enable the development of a renewable source of any type of human cell. The starting material, uniform iPSC, is engineered with properties of interest using genetic editing techniques. At this stage of development, scientists can use sequencing technology to fully characterize the genetic code of the cells. This allows them to create a known and uniform product.

Stem cell based therapy differs from first generation therapy, which uses cancer patient’s cells, and second generation therapy, which uses the inconsistent and diverse cells of healthy donors. Scientists can differentiate expanded stem cell lines into immune cells of interest, including classical T cells (the T in CAR-T) or different cell types that can potentially mitigate safety issues. The cells can then be produced at commercial scale to create a consistent clinical supply that is available for easy administration at any hospital.

First generation cellular therapy has so far been unsuccessful in dealing with solid tumors. Treating solid tumors likely requires multiple genetic changes and therefore numerous steps in genetic engineering. Because stem cell based therapy can be edited and thoroughly examined, scientists can include many complex editing steps without increasing the risk of the inappropriate changes that lead to unwanted cellular effects. This is unlike first and second generation therapy development, where

only a finite number of changes can be reliably supported and the final product is diverse rather than uniform. Stem cell based therapy therefore has the potential to be effective for both blood and solid tumors.

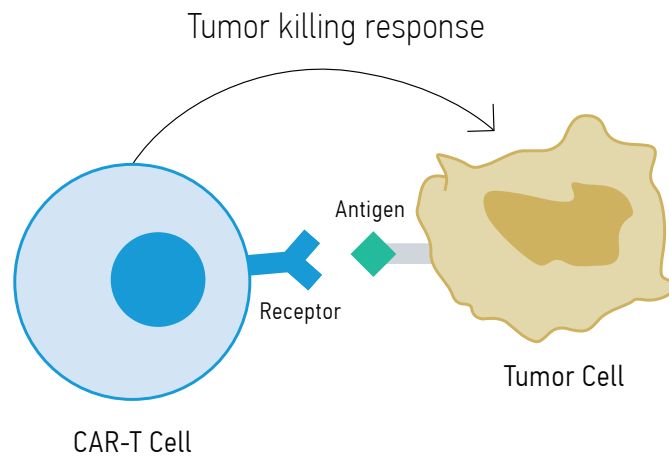
First generation therapy takes up to three weeks to manufacture and often fails quality control measures. Approximately 15-20% of patients do not receive their treatment in a normal clinical setting. As this therapy generates a product for each patient on a one-for-one basis, it does not scale.

Stem cells are essentially unlimited, as one batch can be expanded and stored to form a renewable and reliable supply chain for therapy development.

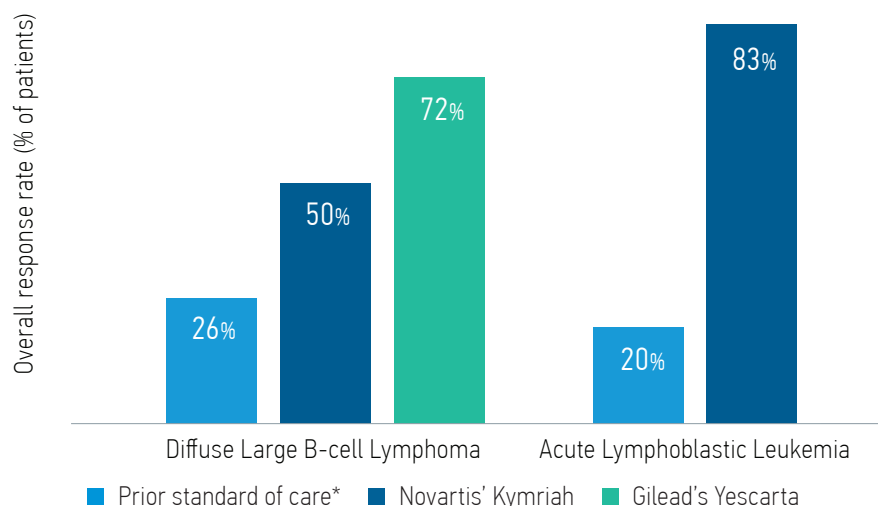
Stem cell based therapy does scale because it can develop an effectively infinite number of doses available for administration at any hospital. This has the potential to double gross margins as compared to the current therapy.

While the initial engineering and development of the therapeutic product based on stem cells is complex, the

DISPLAY 1
Schematic representation of CAR-T cell interacting with a tumor cell expressing the correct antigen



DISPLAY 2
Published response rates for approved CAR-T therapy in liquid cancers



Source: Package insert for approved drugs.

* Standard of care = SCHOLAR-1 study in DLBCL, CLO-212 study in ALL

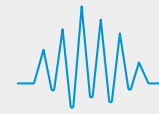
subsequent manufacturing and delivery to patients is easy and convenient. By decreasing the complexity of manufacturing and increasing scalability, stem cell based therapy increases access to therapy and lowers the cost substantially.

CAR-T therapy can be a financial drain because of the high costs of side effects and lengthy hospitalization stays. This limits adoption in outpatient settings (which is potentially better for reimbursement) and earlier lines of therapy (which is a larger total addressable market). First generation CAR-T therapy also has a black box warning for fatal or life threatening side effects. The ability to develop stem cells into any cell type, including a non-T cell therapy, may mitigate the previously observed safety risks without compromising efficacy. That said, the potential risk of long-term use of stem cells is unknown.

We believe there are five key challenges that stem cell based therapy will need to overcome. First is efficacy. Stem cell based therapy needs to demonstrate survival and response results comparable to a personalized stem cell therapy. The first of these products is currently in clinical trials after more than a decade of research and development. Second is

safety. We do not know the long-term risks of using stem cell based therapy. Whether these cells could spontaneously de-differentiate (return to their pluripotent state) and develop cancer remains an unanswered question. Third is regulatory risk. How long would it take for physicians, patients, and regulators to get comfortable with this therapy? Doctors may have to monitor patients long term for unwanted side effects, which would add to the lifetime cost and burden of therapy. Fourth is the longevity of therapy. Since this therapy is made from a foreign substance (unlike one's own immune cells), the patient's immune system may reject it. It is an open question as to whether the low persistence of therapy would diminish the therapy's ability to potentially prevent a hypothetical cancer recurrence. However, it could allow for another dose of therapy, which could have therapeutic benefits. Lastly is commercialization. The ability to scale manufacturing at a reasonable cost remains a major barrier, but we believe that the industry's continuous learning may allow it to overcome this challenge.

First generation cellular therapy has had impressive results and changed the survival statistics for blood cancer patients with no other options.



OTHER DISRUPTORS

Other themes the team is currently researching include

- Blockchain
- Autonomous vehicles
- Machine learning
- Automation/robotics

We believe stem cell based therapy has the potential to become a ubiquitous and disruptive product to treat both blood and solid cancer patients. Stem cell based therapy creates an inexpensive, eternal drug source that may simplify cellular therapy manufacturing and delivery. This therapeutic opportunity solves the main issues of earlier generation therapy such as an inability to tackle solid tumors, manufacturing complexity, high costs, and safety concerns. Stem cell based therapy ensures broader market accessibility while potentially curing cancer patients. Though drug development is still in its infancy, we believe stem cell based therapy may have enormous potential.

Counterpoint Global

INVESTORS	FUNDAMENTAL RESEARCH RESPONSIBILITIES	YEARS OF EXPERIENCE	YEARS WITH FIRM	YEARS WITH TEAM
DENNIS LYNCH	Lead Investor Head of Counterpoint Global	31	27	27
SAM CHAINANI	Head of Counterpoint Global ~ New York, Technology	29	29	25
JASON YEUNG	Health Care	28	23	21
ARMISTEAD NASH	Business Services, Software	25	23	21
DAVID COHEN	Consumer	37	32	26
ALEX NORTON	Consumer, Industrials, Technology (ex Software)	30	25	25
MANAS GAUTAM	Head of Global Endurance, Generalist	13	10	10
ANNE EDELSTEIN	Co-Head of Vitality, Health Care	14	7	7
JENNY LEEDS	Co-Head of Vitality, Health Care	9	6	6
ABHIK KUMAR	Software, Media	16	6	6
JOSHUA JARRETT	Director of Research, Generalist	20	5	5
RUOBING CHANG	Internet	13	9	5
ALEKS SAMETS	Payments	5	5	5
BETH FIFER	Health Care	13	4	4
MUHAMMADRAZA PANJU	Internet	6	4	4
PETE STOVELL	Generalist	31	4	4
MICHAEL MORITZ	Generalist	7	3	3
GINO GRAZIADIO	Generalist	1	1	1
CONSILIENT RESEARCH				
MICHAEL MAUBOUSSIN	Head of Consilient Research	39	5	5
DAN CALLAHAN	Consilient Research	20	5	5
DISRUPTIVE CHANGE RESEARCH				
STAN DELANEY	Big Ideas, Emerging Themes	24	24	21
SASHA COHEN	Big Ideas, Emerging Themes	8	8	8
JUSTIN AMEZQUITA	Big Ideas, Emerging Themes	5	5	5
SUSTAINABILITY RESEARCH				
THOMAS KAMEI	Head of Sustainability Research, Tailwinds	13	13	13
DERRICK MAYO	Sustainability Research	20	11	4
CLIENT RELATIONSHIP & BUSINESS MANAGEMENT				
MARK TODTFELD	Chief Operating Officer	30	20	6
KERRY ANN JAMES	Head of Client Relations, Portfolio Specialist	28	8	4
PRAJAKTA NADKARNI	Portfolio Specialist	21	18	14
MICK MORAN	Portfolio Specialist	11	11	3
MCKENZIE BURKHARDT	Portfolio Specialist	22	22	22
XAVIER SALAZAR	Portfolio Analyst	7	7	3
KATHRYNE HORAN	Portfolio Specialist ~ Global Endurance	13	13	3
EARL PRYCE	Portfolio Administrator	25	25	18
CHAYSE MORGAN	Portfolio Administrator	5	5	5
ERICA CASARENO	Portfolio Administrator	3	3	3
AMBER YANG	Business Management	15	7	4

"Investor" refers to an analyst or portfolio manager of Counterpoint Global.

Team members may change without notice from time to time. Years of Experience listed above refers to Industry Experience.

Years of Experience, Years with Firm and Years with Team are as of December 31, 2024.

Risk Considerations

There is no assurance that a Portfolio will achieve its investment objective. Portfolios are subject to **market risk**, which is the possibility that the market values of securities owned by the Portfolio will decline and that the value of Portfolio shares may therefore be less than what you paid for them. Market values can change daily due to economic and other events (e.g. natural disasters, health crises, terrorism, conflicts and social unrest) that affect markets, countries, companies or governments. It is difficult to predict the timing, duration, and potential adverse effects (e.g. portfolio liquidity) of events. Accordingly, you can lose money investing in this Portfolio. Please be aware that this Portfolio may be subject to certain additional risks.

In general, **equities securities'** values also fluctuate in response to activities specific to a company. Investments in **foreign markets** entail special risks such as currency, political, economic, market and liquidity risks. The risks of investing in **emerging market countries** are greater than risks associated with investments in foreign developed countries. **Privately placed and restricted securities** may be subject to resale restrictions as well as a lack of publicly available information, which will increase their illiquidity and could adversely affect the ability to value and sell them (liquidity risk). **Derivative instruments** may disproportionately increase losses and have a significant impact on performance. They also may be subject to counterparty, liquidity, valuation, correlation and market risks. **Illiquid securities** may be more difficult to sell and value than public traded securities (liquidity risk).

IMPORTANT INFORMATION

There is no guarantee that any investment strategy will work under all market conditions, and each investor should evaluate their ability to invest for the long-term, especially during periods of downturn in the market.

A separately managed account may not be appropriate for all investors. Separate accounts managed according to the Strategy include a number of securities and will not necessarily track the performance of any index. Please consider the investment objectives, risks and fees of the Strategy carefully before investing. A minimum asset level is required.

For important information about the investment managers, please refer to Form ADV Part 2.

The views and opinions and/or analysis expressed are those of the author as of the original publication date and are subject to change at any time due to market or economic conditions and may not necessarily come to pass. Furthermore, the views will not be updated or otherwise revised to reflect information that subsequently becomes available or circumstances existing, or changes occurring, after the date of publication. The views expressed do not reflect the opinions of all investment personnel at Morgan Stanley Investment Management (MSIM) and its subsidiaries and affiliates (collectively "the Firm"), and may not be reflected in all the strategies and products that the Firm offers.

Forecasts and/or estimates provided herein are subject to change and may not actually come to pass.

This material is a general communication, which is not impartial and all information provided has been prepared solely for informational and educational purposes and does not constitute an offer or a recommendation to buy or sell any particular security or to adopt any specific investment strategy. The information herein has not been based on a consideration of any individual investor circumstances and is not investment advice, nor should it be construed in any way as tax, accounting, legal or regulatory advice. To that end, investors should seek independent legal and financial advice, including advice as to tax consequences, before making any investment decision.

This material has been prepared on the basis of publicly available information, internally developed data and other third-party sources believed to be reliable. However, no assurances are provided regarding the reliability of such information and the Firm has not sought to independently verify information taken from public and third-party sources.

This material is not a product of Morgan Stanley's Research Department and should not be regarded as a research material or a recommendation.

The Firm has not authorised financial intermediaries to use and to distribute this material, unless such use and distribution is made in accordance with applicable law and regulation. Additionally, financial intermediaries are required to satisfy themselves that the information in this material is appropriate for any person to whom they provide this material in view of that person's circumstances and purpose. The Firm shall not be liable for, and accepts no liability for, the use or misuse of this material by any such financial intermediary.

This material may be translated into other languages. Where such a translation is made this English version remains definitive. If there are any discrepancies between the English version and any version of this material in another language, the English version shall prevail.

The whole or any part of this material may not be directly or indirectly reproduced, copied, modified, used to create a derivative work, performed, displayed, published, posted, licensed, framed, distributed or transmitted or any of its contents disclosed to third parties without the Firm's express written consent. This material may not be linked to unless such hyperlink is for personal and non-commercial use. All information contained herein is proprietary and is protected under copyright and other applicable law.

Morgan Stanley Investment Management is the asset management division of Morgan Stanley.

DISTRIBUTION

This material is only intended for and will only be distributed to persons resident in jurisdictions where such distribution or availability would not be contrary to local laws or regulations.

MSIM, the asset management division of Morgan Stanley (NYSE: MS), and its affiliates have arrangements in place to market each other's products and services. Each MSIM affiliate is regulated as appropriate in the jurisdiction it operates. MSIM's affiliates are: Eaton Vance Management (International) Limited, Eaton Vance Advisers International Ltd, Calvert Research and Management, Eaton Vance Management, Parametric Portfolio Associates LLC, and Atlanta Capital Management LLC.

This material has been issued by any one or more of the following entities:

EMEA

This material is for Professional Clients/Accredited Investors only.

In the EU, MSIM and Eaton Vance materials are issued by MSIM Fund Management (Ireland) Limited ("FMIL"). FMIL is regulated by the Central Bank of Ireland and is incorporated in Ireland as a private company limited by shares with company registration number 616661 and has its registered address at 24-26 City Quay, Dublin 2, DO2 NY19, Ireland.

Outside the EU, MSIM materials are issued by Morgan Stanley Investment Management Limited (MSIM Ltd) is authorised and regulated by the Financial Conduct Authority. Registered in England. Registered No. 1981121. Registered Office: 25 Cabot Square, Canary Wharf, London E14 4QA.

In Switzerland, MSIM materials are issued by Morgan Stanley & Co. International plc, London (Zurich Branch) Authorised and regulated by the Eidgenössische Finanzmarktaufsicht ("FINMA"). Registered Office: Beethovenstrasse 33, 8002 Zurich, Switzerland.

Outside the US and EU, Eaton Vance materials are issued by Eaton Vance Management (International) Limited ("EVM") 125 Old Broad Street, London, EC2N 1AR, UK, which is authorised and regulated in the United Kingdom by the Financial Conduct Authority.

Italy: MSIM FMIL (Milan Branch), (Sede Secondaria di Milano) Palazzo Serbelloni Corso Venezia, 16 20121 Milano, Italy. **The Netherlands:** MSIM FMIL (Amsterdam Branch), Rembrandt Tower, 11th Floor Amstelplein 1 1096HA, Netherlands. **France:** MSIM FMIL (Paris Branch), 61 rue de Monceau 75008 Paris, France. **Spain:** MSIM FMIL (Madrid Branch), Calle Serrano 55, 28006, Madrid, Spain. **Germany:** MSIM FMIL Frankfurt Branch, Große Gallusstraße 18, 60312 Frankfurt am Main, Germany (Gattung: Zweigniederlassung (FDI) gem. § 53b KWG). **Denmark:** MSIM FMIL (Copenhagen Branch), Gorrissen Federspiel, Axel Towers, Axeltorv2, 1609 Copenhagen V, Denmark.

MIDDLE EAST

Dubai: MSIM Ltd (Representative Office, Unit Precinct 3-7th Floor-Unit 701 and 702, Level 7, Gate Precinct Building 3, Dubai International Financial Centre, Dubai, 506501, United Arab Emirates. Telephone: +97 (0)14 709 7158).

This document is distributed in the Dubai International Financial Centre by Morgan Stanley Investment Management Limited (Representative Office), an entity regulated by the Dubai Financial Services Authority ("DFSA"). It is intended for use by professional clients and market counterparties only. This document is not intended for distribution to retail clients, and retail clients should not act upon the information contained in this document.

This document relates to a financial product which is not subject to any form of regulation or approval by the DFSA. The DFSA has no responsibility for reviewing or verifying any documents in connection with this financial product. Accordingly, the DFSA has not approved this document or any other associated documents nor taken any steps to verify the information set out in this document, and has no responsibility for it. The financial product to which this document relates may be illiquid and/or subject to restrictions on its resale or transfer. Prospective purchasers should conduct their own due diligence on the financial product. If you do not understand the contents of this document, you should consult an authorised financial adviser.

U.S.

NOT FDIC INSURED | OFFER NO BANK GUARANTEE | MAY LOSE VALUE | NOT INSURED BY ANY FEDERAL GOVERNMENT AGENCY | NOT A DEPOSIT

Latin America (Brazil, Chile Colombia, Mexico, Peru, and Uruguay)

This material is for use with an institutional investor or a qualified investor only. All information contained herein is confidential and is for the exclusive use and review of the intended addressee, and may not be passed on to any third party. This material is provided for informational purposes only and does not constitute a public offering, solicitation or recommendation to buy or sell for any product, service, security and/or strategy. A decision to invest should only be made after reading the strategy documentation and conducting in-depth and independent due diligence.

ASIA PACIFIC

Hong Kong: This material is disseminated by Morgan Stanley Asia Limited for use in Hong Kong and shall only be made available to "professional investors" as defined under the Securities and Futures Ordinance of Hong Kong (Cap 571). The contents of this material have not been reviewed nor approved by any regulatory authority including the Securities and Futures Commission in Hong Kong. Accordingly, save where an exemption is available under the relevant law, this material shall not be issued, circulated, distributed, directed at, or made available to, the public in Hong Kong. **Singapore:** This material is disseminated by Morgan Stanley Investment Management Company and should not be considered to be the subject of an invitation for subscription or purchase, whether directly or indirectly, to the public or any member of the public in Singapore other than (i) to an institutional investor under section 304 of the Securities and Futures Act, Chapter 289 of Singapore ("SFA"); (ii) to a "relevant

person" (which includes an accredited investor) pursuant to section 305 of the SFA, and such distribution is in accordance with the conditions specified in section 305 of the SFA; or (iii) otherwise pursuant to, and in accordance with the conditions of, any other applicable provision of the SFA. This publication has not been reviewed by the Monetary Authority of Singapore. **Australia:** This material is provided by Morgan Stanley Investment Management (Australia) Pty Ltd ABN 22122040037, AFSL No. 314182 and its affiliates and does not constitute an offer of interests. Morgan Stanley Investment Management (Australia) Pty Limited arranges for MSIM affiliates to provide financial services to Australian wholesale clients. Interests will only be offered in circumstances under which no disclosure is required under the Corporations Act 2001 (Cth) (the "Corporations Act"). Any offer of interests will not purport to be an offer of interests in circumstances under which disclosure is required under the Corporations Act and will only be made to persons who qualify as a "wholesale client" (as defined in the Corporations Act). This material will not be lodged with the Australian Securities and Investments Commission.

Japan

For professional investors, this material is circulated or distributed for informational purposes only. For those who are not professional investors, this material is provided in relation to Morgan Stanley Investment Management (Japan) Co., Ltd. ("MSIMJ")'s business with respect to discretionary investment management agreements ("IMA") and investment advisory agreements ("IAA"). This is not for the purpose of a recommendation or solicitation of transactions or offers any particular financial instruments. Under an IMA, with respect to management of assets of a client, the client prescribes basic management policies in advance and commissions MSIMJ to make all investment decisions based on an analysis of the value, etc. of the securities, and MSIMJ accepts such commission. The client shall delegate to MSIMJ the authorities necessary for making investment. MSIMJ exercises the delegated authorities based on investment decisions of MSIMJ, and the client shall not make individual instructions. All investment profits and losses belong to the clients; principal is not guaranteed. Please consider the investment objectives and nature of risks before investing. As an investment advisory fee for an IAA or an IMA, the amount of assets subject to the contract multiplied by a certain rate (the upper limit is 2.20% per annum (including tax)) shall be incurred in proportion to the contract period. For some strategies, a contingency fee may be incurred in addition to the fee mentioned above. Indirect charges also may be incurred, such as brokerage commissions for incorporated securities. Since these charges and expenses are different depending on a contract and other factors, MSIMJ cannot present the rates, upper limits, etc. in advance. All clients should read the Documents Provided Prior to the Conclusion of a Contract carefully before executing an agreement. This material is disseminated in Japan by MSIMJ, Registered No. 410 (Director of Kanto Local Finance Bureau (Financial Instruments Firms)), Membership: the Japan Securities Dealers Association, The Investment Trusts Association, Japan, the Japan Investment Advisers Association and the Type II Financial Instruments Firms Association.

Explore our site at www.morganstanley.com/im