

Oak Ridge Investments, LLC

10 South LaSalle Street - Suite 1900
Chicago, Illinois 60603

Style: Large Cap Growth
Firm Assets Under Management: \$3.3 billion
Firm Strategy Assets Under Management: \$538.0 million
Year Founded: 1989
Professional Staff: 28
Firm Ownership: 51% Employee-Owned & 49% Pioneer Investments
Research Status: Approved

PRODUCT OVERVIEW

Oak Ridge Investments, LLC utilizes a bottom-up, stock selection investment approach which focuses on identifying high quality companies that are able to consistently grow earnings and which trade at reasonable valuations. Oak Ridge's "intelligent growth" discipline is founded on the belief that earnings growth is the primary determinant of long-term stock price appreciation. Through fundamental research analysis, the investment team searches for companies with growing earnings driven by sound business strategies, solid financials, strong management teams, dominant products/services, and growing sales. From an investment perspective, Oak Ridge takes a long term and portfolio turnover tends to be low. Oak Ridge takes a long-term perspective toward portfolio investments and portfolio turnover tends to be low. Oak Ridge's process may, at times, result in portfolios that will be over/underweighted in particular sectors/industries versus the S&P 500 Index.

The portfolio characteristics, portfolio statistics, portfolio weightings, allocation history and top five holdings are based on a representative account managed by the investment manager in the same or a substantially similar investment discipline and/or on information that the manager has provided to Morgan Stanley Smith Barney. The performance data and related analyses are based on the performance of the investment manager's composite described on page 3.

TARGET PORTFOLIO CHARACTERISTICS

Number of stock holdings:	40 to 50
Average dividend yield:	Below the S&P 500 Index
P/E ratio:	Similar to/Above the S&P 500 Index
Cash level over market cycle:	0 to 10%
Risk (standard deviation):	Similar to/Below the S&P 500 Index
Average turnover rate:	30 to 50%
Use ADRs:	0 to 10%
Capitalization:	Mega, Large and Medium companies

RISK CONSIDERATIONS

Investing in securities entails risks, including: Equity portfolios are subject to the basic stock market risk that a particular security, or securities in general, may decrease in value.

MANAGER'S INVESTMENT PROCESS

- Through quantitative and fundamental analysis, the manager seeks to identify companies that possess the potential for sustainable long-term earnings growth
- The manager screens for consistent earnings growth, earnings exceeding expectations, healthy forecasted growth, reasonable valuations and market capitalizations over \$3 billion
- Companies are typically industry leaders, have sales driven earnings, superb management, powerful products or concepts and conservative accounting
- The manager may sell securities when they experience decelerating sales and earnings growth, deteriorating fundamentals, attain full valuation or more attractive opportunity exists

MANAGER'S INVESTMENT STRATEGY

- ☐ Top-down / portfolio structures based on economic trends
- ☒ Bottom-up / portfolio structure based on individual securities

% PROCESS BASED ON

0 Asset allocation - cash vs. stock
15 Industry or sector weighting
85 Stock Selection

PORTFOLIO STATISTICS

	-----06/11-----			12/10
	Oak Ridge	R1000 Gr	S&P 500 Index	Oak Ridge
Number of stock holdings	44	591	500	45
Weighted average dividend yield	0.9%	1.4%	2.0%	1.0%
Weighted average P/E ratio ¹	20.70x	17.91x	14.79x	17.56x
Weighted average portfolio beta	0.89	1.01	1.01	1.03
Mega capitalization ⁺	0.0%	27.8%	33.8%	30.7%
Large capitalization ⁺	0.0%	46.5%	51.8%	52.2%
Medium capitalization ⁺	0.0%	24.8%	14.1%	17.1%
Small capitalization ⁺	0.0%	0.9%	0.2%	0.0%
Micro capitalization ⁺	0.0%	0.0%	0.0%	0.0%

PORTFOLIO'S EQUITY SECTOR WEIGHTINGS⁺

	-----06/11-----			12/10
Sector	Oak Ridge	R1000 Gr	S&P 500 Index	Oak Ridge
Energy	10.30	11.57	12.67	8.68
Materials	2.20	5.99	3.66	4.08
Industrials	12.80	13.48	11.25	11.90
Consumer Discretionary	13.80	14.02	10.65	13.82
Consumer Staples	4.90	11.83	10.64	5.17
Health Care	13.00	10.93	11.71	14.25
Financials	6.80	3.98	15.15	6.42
Information Technology	29.50	26.97	17.79	35.68
Telecomm Services	0.00	1.15	3.09	0.00
Utilities	0.00	0.08	3.38	0.00
Cash/Cash Equivalents	6.80	0.00	0.00	0.00

PORTFOLIO'S ALLOCATION HISTORY (%)⁺

	06/11	03/11	12/10	09/10
U.S. Stocks	93	94	97	94
Cash/Cash Equivalents	7	6	3	6

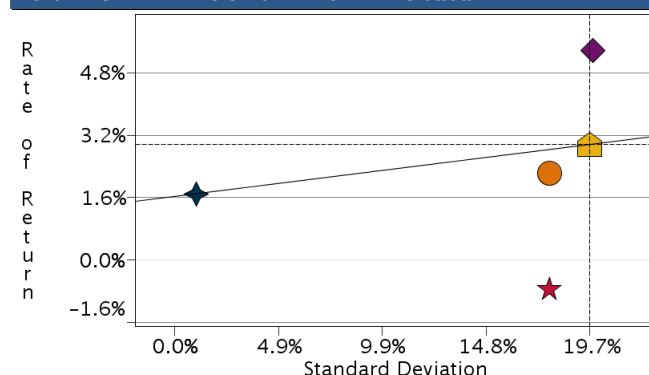
PORTFOLIO'S TOP FIVE EQUITY HOLDINGS

	%
IBM	4.7
EMC Corp	3.6
Apple	3.3
Google	3.2
Danaher Corp	2.9

¹The P/E used here is calculated by the harmonic mean.

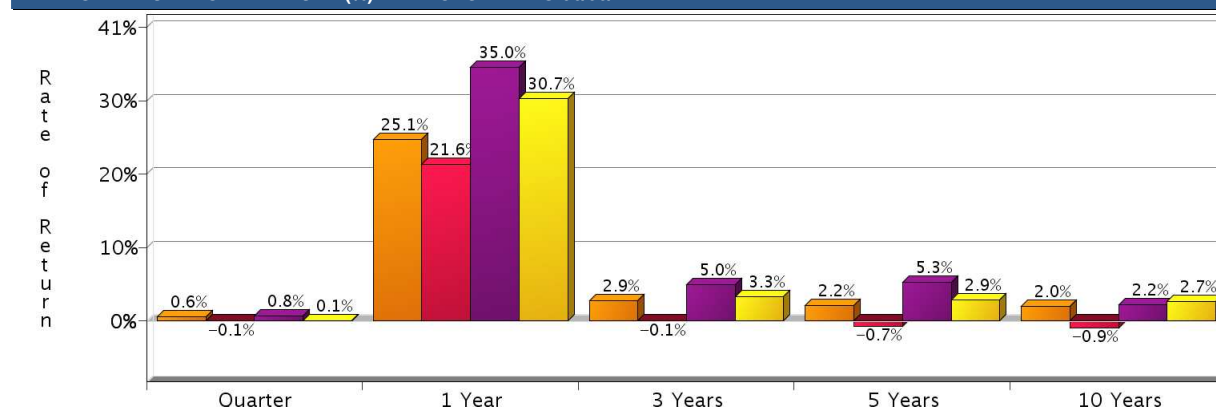
⁺Total may not equal 100% due to rounding.

RISK/RETURN ANALYSIS – 5 YEARS ENDING 06/30/11



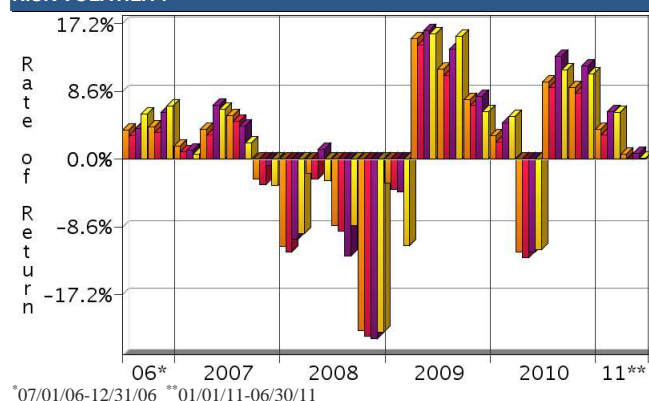
	STD	ROR
○ Oak Ridge (Gross)	17.79	2.20
★ Oak Ridge (Net)	17.79	-0.75
◆ Russell 1000 Growth Index	19.88	5.33
■ S&P 500 Index	19.70	2.94
◆ 90-Day Treasury Bills	1.01	1.69

AVERAGE ANNUAL TOTAL RETURN (%) – PERIODS ENDING 06/30/11



INVESTMENT RESULTS	1 Year			Annual Rates of Return (%)							10 Year - Ending 06/30/11	
	2001	2002	2003	2004	2005	2006	2007	2008	2009	2010	Annualized	Std. Dev.
Oak Ridge (Gross)	-13.33	-15.85	19.26	12.89	8.77	3.94	8.66	-37.41	33.73	8.75	2.00	15.64
Oak Ridge (Net)	-15.94	-18.39	15.96	9.72	5.69	0.96	5.58	-39.44	30.13	5.66	-0.94	15.64
Russell 1000 Growth Index	-20.42	-27.88	29.75	6.30	5.26	9.07	11.81	-38.44	37.21	16.71	2.24	19.36
S&P 500 Index	-11.89	-22.10	28.68	10.88	4.91	15.79	5.49	-37.00	26.46	15.06	2.72	18.24

RISK VOLATILITY



	Number Of	Up Qtrs.	Down Qtrs.
Orange Square Oak Ridge (Gross)		13	7
Red Square Oak Ridge (Net)		12	8
Purple Square Russell 1000 Growth Index		14	6
Yellow Square S&P 500 Index		13	7

PORTFOLIO'S QUARTERLY RETURNS (%)

	Quarter 1		Quarter 2		Quarter 3		Quarter 4	
	Gross	Net	Gross	Net	Gross	Net	Gross	Net
2001	-11.95	-12.68	6.86	6.13	-14.25	-14.98	7.42	6.69
2002	0.36	-0.37	-9.61	-10.34	-12.12	-12.85	5.56	4.83
2003	-2.43	-3.16	9.06	8.33	1.78	1.05	10.12	9.39
2004	3.29	2.56	1.62	0.89	-0.29	-1.02	7.86	7.13
2005	-4.07	-4.80	3.48	2.75	4.95	4.22	4.40	3.67
2006	0.89	0.16	-4.54	-5.27	3.70	2.97	4.07	3.34
2007	1.67	0.94	3.82	3.09	5.56	4.83	-2.48	-3.21
2008	-11.07	-11.80	-1.78	-2.51	-8.42	-9.15	-21.75	-22.48
2009	-3.08	-3.81	15.24	14.51	11.37	10.64	7.51	6.78
2010	2.92	2.19	-11.75	-12.48	9.80	9.07	9.05	8.32
2011	3.79	3.06	0.63	-0.10				

Related Select UMA

PORTFOLIO'S RISK STATISTICS – PERIODS ENDING 06/30/11^{1,2}

	3 Year	5 Year
Standard Deviation	21.67%	17.79%
Standard Deviation of Primary Benchmark	24.66%	19.88%
Sharpe Ratio	0.12	0.03
Sharpe Ratio of Primary Benchmark	0.19	0.18
Alpha	-1.75%	-2.75%
Beta	0.87	0.88
Downside Risk	3.52%	3.55%
R-Squared	0.99	0.97
Tracking Error	4.09%	3.69%
Information Ratio	-0.52	-0.85

PORTFOLIO DIVERSIFICATION - R² (10 YEARS ENDING 06/11)*

	R ²
Oak Ridge vs. S&P 500 Index	0.92
Oak Ridge vs. Russell 1000 Growth Index	0.93

*Statistics are calculated using gross of fee performance only.

1. Statistics are calculated using gross of fee performance only.
2. Russell 1000 Growth Index was used as the primary benchmark and the 90-Day U.S. T-Bill Index as the risk-free benchmark.

See page 3 for a discussion of the sources of the performance data used to calculate the performance results and related analyses on page 2.

Past performance is no guarantee of future results. This profile is not complete without pages 3 and 4, which contain important notes, including disclosures about the composite, index descriptions and a glossary of terms. Information shown is as of June 30, 2011, unless otherwise noted. All data are subject to change.

IMPORTANT NOTES AND DISCLOSURES

COMPOSITE DISCLOSURES

Past performance is no guarantee of future results. Actual individual account results may differ from the performance shown in this profile. There is no guarantee that this investment strategy will work under all market conditions. Do not use this profile as the sole basis for your investment decisions.

Performance results in this profile are calculated assuming reinvestment of dividends and income. Returns for more than one year are annualized and based on quarterly data. Returns for periods of less than a calendar year show the total return for the period and are not annualized.

Sources of Performance Results and Other Data: The performance data and certain other information for this strategy (including the data on page 1 of this profile) reflect the investment manager's results in managing Morgan Stanley Smith Barney Fiduciary Services program accounts in the Morgan Stanley channel or the Smith Barney channel, or the investment manager's results in managing accounts and investment products, in the same or a substantially similar investment discipline. This information for the investment manager is presented solely to provide information about accounts that were managed according to investment objectives and strategies the same or substantially similar to the corresponding investment discipline in the Select UMA program. Although the Fiduciary Services and Select UMA programs are both Morgan Stanley managed account programs, the performance results and other features of similar investment disciplines in the two programs may differ due to investment and operational differences. For example, the individual investment disciplines in the Select UMA accounts may contain fewer securities, which would lead to a more concentrated portfolio. The automatic rebalancing, wash sale loss and tax-harvesting features of the Select UMA program, which are not available in Fiduciary Services, also could cause differences in performance. Accordingly, the performance of the accounts in the Fiduciary Services program is not, and may differ significantly from, the performance of the accounts in the Select UMA program and should not be considered indicative of or a substitute for Select UMA performance. Similarly, performance results of the investment manager's composites may differ from those of Select UMA accounts managed in the same or a substantially similar investment discipline.

Related Performance:

Oak Ridge Investments, LLC's large cap growth equity performance prior to 10/1/2003 represents a composite of all fully discretionary large cap growth equity wrap-fee and separately managed accounts over \$100,000 managed by Oak Ridge Investments, LLC. The number of holdings in these accounts ranged from 35 to 45. The composite was size-weighted and consisted of 60 accounts with a market value of \$139.0 million as of 9/30/2003.

Select UMA Performance:

In this profile, the performance from 10/1/2003 consists of accounts in either the Morgan Stanley or the Smith Barney form of the Fiduciary Services program. Performance composites calculated by Morgan Stanley Smith Barney include all fee-paying portfolios with no investment restrictions. New accounts are included upon the first full quarter of performance. Terminated accounts are removed in the quarter in which they terminate. Performance is calculated on a total return basis and by asset weighting the individual portfolio returns using the beginning of period values.

Gross Performance: Oak Ridge's gross results do not reflect a deduction of any investment advisory fees or program fees, charged by Oak Ridge or Morgan Stanley Smith Barney, but are net of commissions charged on securities transactions.

Net Performance for all Periods: Net performance results reflect a deduction of .73% quarterly. This consists of three components: 0.625% maximum quarterly MSSB Advisory Fee and 0.03% maximum quarterly Program Overlay Fee (which, together cover the services provided by Morgan Stanley Smith Barney), plus .075% quarterly SMA Manager Fees (being the fee currently charged by Oak Ridge to new clients for managing their assets in the Select UMA program). The SMA Manager Fees may differ from manager to manager, and managers may change their fee to new clients from time to time. If you select this manager for your account, check the SMA Manager Fees specified in the written client agreement, in case these have changed since you received this profile.

Morgan Stanley Smith Barney program fees are usually deducted quarterly, and have a compounding effect on performance. The Morgan Stanley Smith Barney program fee, which differs among programs and clients, is described in the applicable Morgan Stanley Smith Barney ADV brochure, which is available at www.smithbarney.com/ADV or on request from your Financial Advisor or Private Wealth Advisor.

Focus List, Approved List, and Watch Status:

Consulting Group Investment Advisor Research ("CG IAR") uses two methods to evaluate investment products in applicable advisory programs. In general, strategies that have passed a more thorough evaluation may be placed on the "Focus List", while strategies that have passed through a different and less comprehensive evaluation process may be placed on the "Approved List". Sometimes an investment product may be evaluated using the Focus List process but then placed on the Approved List instead of the Focus List.

Investment products may move from the Focus List to the Approved List, or vice versa. CG IAR may also determine that an investment product no longer meets the criteria under either evaluation process and will no longer be recommended in investment advisory programs (in which case the investment product is given a "Not Approved" status).

CG IAR has a "Watch" policy and may describe a Focus List or Approved List investment product as being on "Watch" if CG IAR identifies specific areas that (a) merit further evaluation by CG IAR and (b) may, but are not certain to, result in the investment product becoming "Not Approved". The Watch period depends on the length of time needed for CG IAR to conduct its evaluation and for the investment manager to address any concerns. CG IAR may, but is not obligated to, note the Watch status in this report with a "W" or "Watch" on the cover page.

For more information on the Focus List, Approved List, and Watch processes, please see the applicable Morgan Stanley Smith Barney ADV brochure. Your Financial Advisor or Private Wealth Advisor can provide on request a copy of a paper entitled "Manager Research and Selection: A Disciplined Process".

ADDITIONAL DISCLOSURES

The information about a representative account is for illustrative purposes only. Actual account holdings, performance and other data will vary depending on the size of an account, cash flows within an account, and restrictions on an account. Holdings are subject to change daily. The information in this profile is not a recommendation to buy, hold or sell securities.

Actual portfolio statistics may vary from target portfolio characteristics.

The investment manager may use the same or substantially similar investment strategies, and may hold similar portfolios of investments, in other portfolios or products it manages (including mutual funds). These may be available at Morgan Stanley Smith Barney or elsewhere, and may cost an investor more or less than this strategy in Morgan Stanley Smith Barney's Select UMA program.

The portfolio may, at times, invest in exchange-traded funds (ETFs), which are a form of equity security in seeking to maintain continued full exposure to the broad equity market.

Morgan Stanley Smith Barney investment advisory programs may require a minimum asset level and, depending on your specific investment objectives and financial position, may not be suitable for you. Investment advisory program accounts are opened pursuant to a written client agreement.

The investment manager acts independently of, and is not an affiliate of, Morgan Stanley Smith Barney.

Morgan Stanley Smith Barney LLC Member SIPC.

INDEX DESCRIPTIONS

90-Day Treasury Bills

The 90-Day Treasury Bill is a short-term obligation issued by the United States government. T-bills are purchased at a discount to the full face value, and the investor receives the full value when they mature. The difference of 'discount' is the interest earned. T-bills are issued in denominations of \$10,000 (auction) and \$1,000 increments thereafter.

Russell 1000 Growth Index

The Russell 1000 Growth Index is representative of the U.S. market for large capitalization stocks containing those companies in the Russell 1000 Index with higher price-to-book ratios and higher forecasted growth.

S&P 500 Index

Widely regarded as the best single gauge of the U.S. equities market, this world-renowned index includes a representative sample of 500 leading companies in leading industries of the U.S. economy. Although the S&P 500 focuses on the large-cap segment of the market, with over 80% coverage of U.S. equities, it is also an ideal proxy for the total market.

Indices are unmanaged and have no expenses. You cannot invest directly in an index.

GLOSSARY OF TERMS

Alpha is a mathematical estimate of risk-adjusted return expected from a portfolio above and beyond the benchmark return at any point in time.

American Depositary Receipts (ADRs) are receipts for shares of a foreign-based corporation held in the vault of a U.S. bank.

Average Portfolio Beta is a measure of the sensitivity of a benchmark or portfolio's rates of return to changes against a market return. The market return is the S&P 500 Index. It is the coefficient measuring a stock or a portfolio's relative volatility.

Capitalization is defined as the following: Mega (\$50.0 billion and Above), Large (\$11.0 - \$50.0 billion), Medium (\$2 - \$11.0 billion), Small (\$500m - \$2 billion) and Micro (below \$500 million).

Downside Risk is a measure of the risk associated with achieving a specific target return. This statistic separates portfolio volatility into downside risk and upside uncertainty. The downside considers all returns below the target return, while the upside considers all returns equal to or above the target return.

Duration is a measure of price sensitivity expressed in years.

Information Ratio is a measure of the investment manager's skill to add active value against a given benchmark relative to how stable that active return has been. Essentially, the information ratio explains how significant a manager's alpha is. Therefore, the higher the information ratio, the more significant the alpha.

Investment Grade Bonds are those rated by Standard & Poor's AAA (highest rated), AA, A or BBB (or equivalent rating by other rating agencies or, in the case of securities not rated, by the investment manager).

Price/Earnings Ratio (P/E Ratio) shows the multiple of earnings at which a stock sells. Determined by dividing current stock price by current earnings per share (adjusted for stock splits). Earnings per share for the P/E ratio are determined by dividing earnings for past 12 months by the number of common shares outstanding. The P/E ratio shown here is calculated by the harmonic mean.

R² (R-Squared)/Portfolio Diversification indicates the proportion of a security's total variance that is benchmark-related or is explained by variations in the benchmark.

Sharpe Ratio measures the efficiency, or excess return per unit of volatility, of a manager's returns. It evaluates managers' performance on a volatility-adjusted basis.

Standard Deviation is a statistical measure of historical variability or spread of returns around a mathematical average return that was produced by the investment manager over a given measurement period. The higher the standard deviation, the greater the variability in the investment manager's returns relative to its average return.

Tracking Error represents the standard deviation of the difference between the performance of the investment strategy and the benchmark. This provides a historical measure of the variability of the investment strategy's returns relative to its benchmark.