

Frontier Capital Mgmt. Co., LLC

99 Summer Street - 19th Floor
Boston, Massachusetts 02110

PRODUCT OVERVIEW

Frontier Capital Management Co., LLC ("Frontier") Small Cap Value strategy seeks long-term capital appreciation by owning small capitalization stocks identified through fundamental research and considered mispriced relative to their intrinsic value. The product is expected to have a value-oriented bias. The product will hold micro, small, and medium-cap U.S. equities, although focused on small-caps. The Frontier investment process is research-driven and bottom-up. The product typically avoids "deep value" stocks and tends to own companies that they consider to be "relative value". Portfolio managers have final authority on all purchase and sale decisions and are supported by the research analyst team who dedicate 100% of their time to identifying the best risk/reward ideas for the portfolio.

TARGET PORTFOLIO CHARACTERISTICS

| | |
|-------------------------------|-----------------------------------|
| Number of stock holdings: | 70 to 100 |
| Average dividend yield: | Below the S&P 500 |
| P/E ratio: | Above the S&P 500 |
| Cash level over market cycle: | 2 to 5% |
| Risk (standard deviation): | Similar to/Above the S&P 500 |
| Average turnover rate: | 0 to 70% |
| Use ADRs: | 0 to 5% |
| Capitalization: | Medium, Small and Micro companies |

RISK CONSIDERATIONS

Investing in securities entails risks, including: Small-cap stocks may be subject to a higher degree of risk than more established companies' securities, including higher volatility. The illiquidity of the small-cap market may adversely affect the value of these investments. When investing in value securities, the market may not necessarily have the same value assessment as the manager, and, therefore, the performance of the securities may decline.

MANAGER'S INVESTMENT PROCESS

- Fundamental, bottom-up research is the cornerstone to Frontier's investment process.
- For each investment, Frontier builds a proprietary earnings model, balance sheet and derive upside / downside price targets. From this analysis, Frontier determines what they believe are the best risk/reward investments for the portfolio.
- Frontier narrows the initial universe down by assessing EV/Sales metrics along with review of balance sheets and underlying growth.
- Frontier's investable universe is comprised of what they believe are companies with sound business models and management teams, appealing revenue growth, potential margin expansion, attractive ROC, and competitive advantage.
- Frontier constructs a portfolio by identifying what feel are those companies with compelling valuations, unrecognized earnings power and multiple ways to win, as they look out 3-5 years.

MANAGER'S INVESTMENT STRATEGY

- ☐ Top-down / portfolio structures based on economic trends
- ☒ Bottom-up / portfolio structure based on individual securities

% PROCESS BASED ON

| | |
|----|-----------------------------------|
| 0 | Asset allocation - cash vs. stock |
| 15 | Industry or sector weighting |
| 85 | Stock Selection |

Style: Small Cap Value
Sub-Style: Relative Value
Firm Assets Under Management: \$10.0 billion^
Firm Strategy Assets Under Management: \$160.0 million^
Year Founded: 1980
Professional Staff: 23^^
Firm Ownership: Majority-owned by Affiliated Managers Group (AMG)
CG IAR Status: Focus

PORTFOLIO STATISTICS

| | -----06/13----- | 12/12 | |
|---|-----------------|-----------------|----------|
| | Frontier | Russell 2000 VI | Frontier |
| Number of stock holdings | Data Not | 1,392 | — |
| Weighted average dividend yield | Available | 2.1% | 1.3% |
| Weighted average P/E ratio ¹ | From Manager | 15.13x | 15.51x |
| Weighted average portfolio beta | — | 1.18 | — |
| Mega capitalization ⁺ | 0.0% | 0.0% | 0.0% |
| Large capitalization ⁺ | 0.0% | 0.0% | 0.0% |
| Medium capitalization ⁺ | 0.0% | 7.0% | 0.0% |
| Small capitalization ⁺ | 0.0% | 71.7% | 0.0% |
| Micro capitalization ⁺ | 0.0% | 21.3% | 0.0% |

PORTFOLIO'S EQUITY SECTOR WEIGHTINGS ⁺

| | -----06/13----- | | 12/12 |
|------------------------|-----------------|-----------------|----------|
| Sector | Frontier | Russell 2000 VI | Frontier |
| Energy | 0.00 | 15.25 | 5.96 |
| Materials | 0.00 | 3.32 | 5.09 |
| Industrials | 0.00 | 9.01 | 27.31 |
| Consumer Discretionary | 0.00 | 8.64 | 7.09 |
| Consumer Staples | 0.00 | 7.13 | 1.05 |
| Health Care | 0.00 | 11.75 | 4.42 |
| Financials | 0.00 | 28.65 | 30.89 |
| Information Technology | 0.00 | 6.96 | 11.56 |
| Telecomm Services | 0.00 | 2.99 | 0.00 |
| Utilities | 0.00 | 6.28 | 5.85 |
| Cash/Cash Equivalents | 0.00 | 0.00 | 0.84 |

PORTFOLIO'S ALLOCATION HISTORY (%)⁺

| | 06/13 | 03/13 | 12/12 | 09/12 |
|-----------------------|-------|-------|-------|-------|
| U.S. Stocks | 0 | 96 | 99 | 98 |
| Cash/Cash Equivalents | 0 | 4 | 1 | 2 |

PORTFOLIO'S TOP FIVE EQUITY HOLDINGS

| | % |
|---------------------------------|---|
| Data Not Available From Manager | — |
| — | — |
| — | — |
| — | — |
| — | — |

[^]As of 12/31/2010. Information as of 06/30/2013 is not yet available.

^{^^}As of 03/31/2010. Information as of 06/30/2013 is not yet available.

¹The P/E used here is calculated by the harmonic mean.

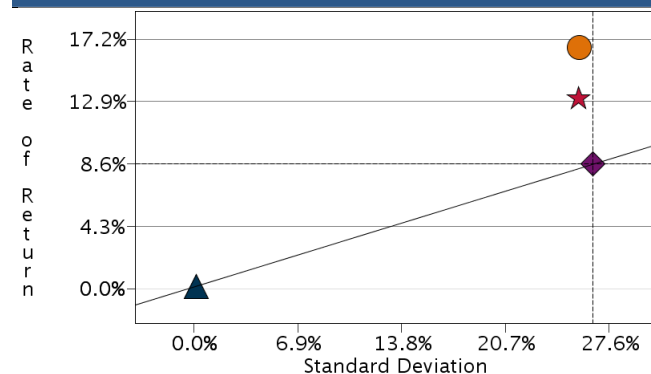
⁺Total may not equal 100% due to rounding.

Frontier Capital Management Co., LLC

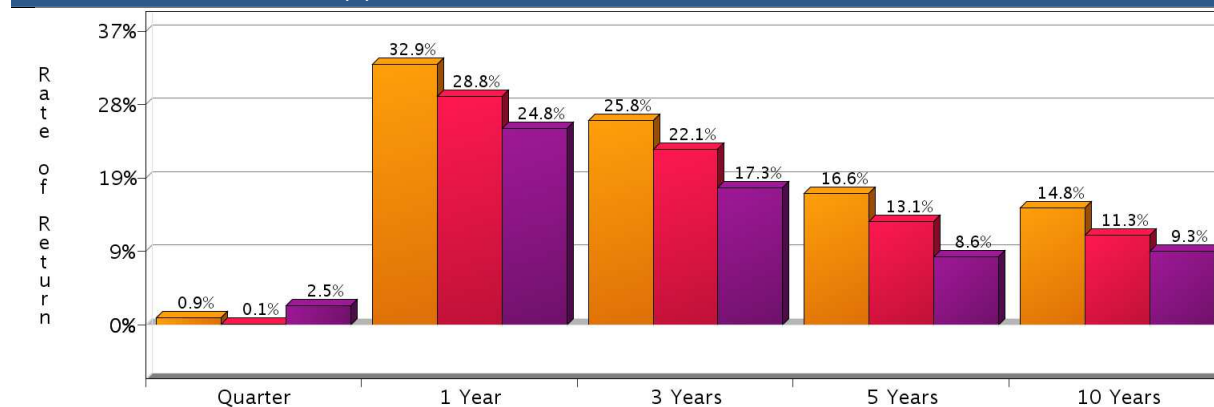
Style: Small Cap Value

Sub-Style: Relative Value

RISK/RETURN ANALYSIS – 5 YEARS ENDING 06/30/13



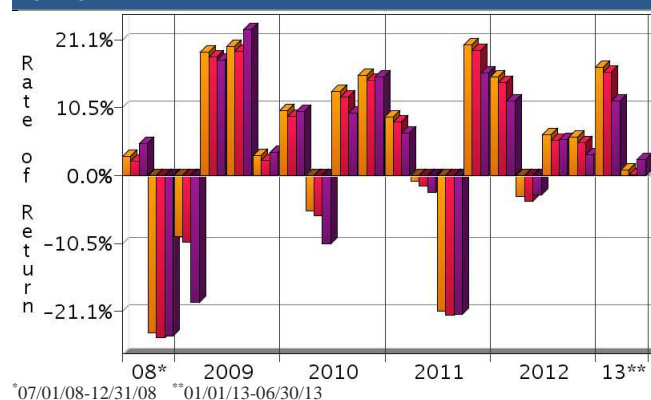
AVERAGE ANNUAL TOTAL RETURN (%) – PERIODS ENDING 06/30/13



| | STD | ROR |
|------------------|-------|-------|
| Frontier (Gross) | 25.62 | 16.59 |
| Frontier (Net) | 25.57 | 13.09 |
| Russell 2000 V1 | 26.53 | 8.59 |
| 90-Day T-Bills | 0.15 | 0.17 |

| INVESTMENT RESULTS | Annual Rates of Return (%) | | | | | | | | | | 10 Year - Ending 06/30/13 Annualized | Std. Dev. |
|--------------------|----------------------------|-------|------|-------|-------|--------|-------|-------|-------|-------|--------------------------------------|-----------|
| | 2003 | 2004 | 2005 | 2006 | 2007 | 2008 | 2009 | 2010 | 2011 | 2012 | | |
| Frontier (Gross) | 35.70 | 20.83 | 9.27 | 19.64 | 1.11 | -27.44 | 33.57 | 35.94 | 2.73 | 25.70 | 14.76 | 19.87 |
| Frontier (Net) | 31.80 | 17.27 | 5.97 | 16.11 | -2.00 | -29.89 | 29.71 | 32.04 | -0.27 | 21.87 | 11.32 | 19.84 |
| Russell 2000 V1 | 46.03 | 22.25 | 4.71 | 23.48 | -9.78 | -28.93 | 20.57 | 24.50 | -5.50 | 18.05 | 9.30 | 20.86 |

RISK VOLATILITY



PORTFOLIO'S QUARTERLY RETURNS (%)

| | Quarter 1 | | Quarter 2 | | Quarter 3 | | Quarter 4 | |
|------|-----------|--------|-----------|-------|-----------|--------|-----------|--------|
| | Gross | Net | Gross | Net | Gross | Net | Gross | Net |
| 2003 | -6.74 | -7.52 | 17.68 | 16.90 | 7.61 | 6.83 | 14.90 | 14.12 |
| 2004 | 7.62 | 6.84 | 2.75 | 1.97 | -2.84 | -3.62 | 12.46 | 11.68 |
| 2005 | -5.22 | -6.00 | 4.45 | 3.67 | 5.54 | 4.76 | 4.58 | 3.80 |
| 2006 | 13.42 | 12.64 | -1.99 | -2.77 | 1.01 | 0.23 | 6.55 | 5.77 |
| 2007 | -0.19 | -0.97 | 5.11 | 4.33 | -1.13 | -1.91 | -2.52 | -3.30 |
| 2008 | -7.47 | -8.25 | 0.68 | -0.10 | 3.02 | 2.24 | -24.40 | -25.18 |
| 2009 | -9.49 | -10.27 | 19.17 | 18.39 | 20.09 | 19.31 | 3.12 | 2.34 |
| 2010 | 10.05 | 9.27 | -5.48 | -6.26 | 13.02 | 12.24 | 15.63 | 14.85 |
| 2011 | 9.15 | 8.37 | -0.84 | -1.60 | -21.07 | -21.70 | 20.25 | 19.44 |
| 2012 | 15.29 | 14.45 | -3.20 | -3.96 | 6.32 | 5.48 | 5.94 | 5.12 |
| 2013 | 16.87 | 16.01 | 0.93 | 0.13 | | | | |

PORTFOLIO'S RISK STATISTICS – PERIODS ENDING 06/30/13^{1,2}

| | 3 Year | 5 Year |
|---|--------|--------|
| Standard Deviation | 22.93% | 25.62% |
| Standard Deviation of Primary Benchmark | 20.64% | 26.53% |
| Sharpe Ratio | 1.12 | 0.64 |
| Sharpe Ratio of Primary Benchmark | 0.84 | 0.32 |
| Alpha | 6.08% | 7.93% |
| Beta | 1.10 | 0.94 |
| Downside Risk | 0.93% | 1.67% |
| R-Squared | 0.98 | 0.95 |
| Tracking Error | 4.08% | 5.99% |
| Information Ratio | 2.08 | 1.33 |

| | Number Of | Up Qtrs. | Down Qtrs. |
|------------------|-----------|----------|------------|
| Frontier (Gross) | 14 | 6 | 6 |
| Frontier (Net) | 14 | 6 | 6 |
| Russell 2000 V1 | 14 | 6 | 6 |

PORTFOLIO DIVERSIFICATION - R² (10 YEARS ENDING 06/13)*

| | R ² |
|------------------------------|----------------|
| Frontier vs. Russell 2000 V1 | 0.93 |

*Statistics are calculated using gross of fee performance only.

1. Statistics are calculated using gross of fee performance only.
 2. Russell 2000 V1 was used as the primary benchmark and the 90-Day U.S. T-Bill Index as the risk-free benchmark.

See page 3 for a discussion of the sources of the performance data used to calculate the performance results and related analyses on page 2.

Past performance is no guarantee of future results. This profile is not complete without pages 3 and 4, which contain important notes, including disclosures about the composite, index descriptions and a glossary of terms. Information shown is as of June 30, 2013, unless otherwise noted. All data are subject to change.

IMPORTANT NOTES AND DISCLOSURES

COMPOSITE DISCLOSURES

Past performance is no guarantee of future results. Actual individual account results may differ from the performance shown in this profile. There is no guarantee that this investment strategy will work under all market conditions. Do not use this profile as the sole basis for your investment decisions.

Performance results in this profile are calculated assuming reinvestment of dividends and income. Returns for more than one year are annualized and based on quarterly data. Returns for periods of less than a calendar year show the total return for the period and are not annualized.

Sources of Performance Results and Other Data: The performance data and certain other information for this strategy (including the data on page 1 of this profile) reflect the investment manager's results in managing Morgan Stanley program accounts, or the investment manager's results in managing accounts and investment products, in the same or a substantially similar investment discipline. (For periods through June 2012, the Fiduciary Services program operated through two channels - Morgan Stanley channel and the Smith Barney channel - and any performance and other data relating to Fiduciary Services accounts shown here for these periods is calculated using accounts in only one of the these channels.) This information for the investment manager is presented solely to provide information about accounts that were managed according to investment objectives and strategies the same or substantially similar to the corresponding investment discipline in the Select UMA program. Although the Fiduciary Services and Select UMA programs are both Morgan Stanley managed account programs, the performance results and other features of similar investment disciplines in the two programs may differ due to investment and operational differences. For example, the individual investment disciplines in the Select UMA accounts may contain fewer securities, which would lead to a more concentrated portfolio. The automatic rebalancing, wash sale loss and tax-harvesting features of the Select UMA program, which are not available in Fiduciary Services, also could cause differences in performance. Accordingly, the performance of the accounts in the Fiduciary Services program is not, and may differ significantly from, the performance of the accounts in the Select UMA program and should not be considered indicative of or a substitute for Select UMA performance. Similarly, performance results of the investment manager's composites may differ from those of Select UMA accounts managed in the same or a substantially similar investment discipline.

Related Performance:

Frontier Capital Management Co., LLC ("Frontier") Small Cap Value performance represents all actual, fee-paying, fully discretionary accounts managed by Frontier.

Select UMA Performance:

Gross Performance: Frontier's gross results do not reflect a deduction of any investment advisory fees or program fees, charged by Frontier or Morgan Stanley, but are net of commissions charged on securities transactions.

Net Performance for all Periods: Net performance results reflect a deduction of 0.78% quarterly. This consists of three components: 0.625% maximum quarterly MS Advisory Fee and 0.03% maximum quarterly Program Overlay Fee (which, together cover the services provided by Morgan Stanley), plus 0.125% quarterly SMA Manager Fees (being the fee currently charged by Frontier to new clients for managing their assets in the Select UMA program). The SMA Manager Fees may differ from manager to manager, and managers may change their fee to new clients from time to time. If you select this manager for your account, check the SMA Manager Fees specified in the written client agreement, in case these have changed since you received this profile.

Morgan Stanley program fees are usually deducted quarterly, and have a compounding effect on performance. The Morgan Stanley program fee, which differs among programs and clients, is described in the applicable Morgan Stanley ADV brochure, which is available at www.morganstanley.com/ADV or on request from your Financial Advisor or Private Wealth Advisor.

Focus List, Approved List, and Watch Status:

Consulting Group Investment Advisor Research ("CG IAR") uses two methods to evaluate investment products in applicable advisory programs. In general, strategies that have passed a more thorough evaluation may be placed on the

"Focus List", while strategies that have passed through a different and less comprehensive evaluation process may be placed on the "Approved List". Sometimes an investment product may be evaluated using the Focus List process but then placed on the Approved List instead of the Focus List.

Investment products may move from the Focus List to the Approved List, or vice versa. CG IAR may also determine that an investment product no longer meets the criteria under either evaluation process and will no longer be recommended in investment advisory programs (in which case the investment product is given a "Not Approved" status).

CG IAR has a "Watch" policy and may describe a Focus List or Approved List investment product as being on "Watch" if CG IAR identifies specific areas that (a) merit further evaluation by CG IAR and (b) may, but are not certain to, result in the investment product becoming "Not Approved". The Watch period depends on the length of time needed for CG IAR to conduct its evaluation and for the investment manager to address any concerns. CG IAR may, but is not obligated to, note the Watch status in this report with a "W" or "Watch" on the cover page.

For more information on the Focus List, Approved List, and Watch processes, please see the applicable Morgan Stanley ADV brochure. Your Financial Advisor or Private Wealth Advisor can provide on request a copy of a paper entitled "Manager Research and Selection: A Disciplined Process".

ADDITIONAL DISCLOSURES

The information about a representative account is for illustrative purposes only. Actual account holdings, performance and other data will vary depending on the size of an account, cash flows within an account, and restrictions on an account. Holdings are subject to change daily. The information in this profile is not a recommendation to buy, hold or sell securities.

Actual portfolio statistics may vary from target portfolio characteristics.

The investment manager may use the same or substantially similar investment strategies, and may hold similar portfolios of investments, in other portfolios or products it manages (including mutual funds). These may be available at Morgan Stanley or elsewhere, and may cost an investor more or less than this strategy in Morgan Stanley's Select UMA program.

The portfolio may, at times, invest in exchange-traded funds (ETFs), which are a form of equity security in seeking to maintain continued full exposure to the broad equity market.

Morgan Stanley investment advisory programs may require a minimum asset level and, depending on your specific investment objectives and financial position, may not be suitable for you. Investment advisory program accounts are opened pursuant to a written client agreement.

The investment manager acts independently of, and is not an affiliate of, Morgan Stanley Smith Barney LLC.

Morgan Stanley Smith Barney LLC Member SIPC.

INDEX DESCRIPTIONS

90-Day T-Bills

The 90-Day Treasury Bill is a short-term obligation issued by the United States government. T-bills are purchased at a discount to the full face value, and the investor receives the full value when they mature. The difference of 'discount' is the interest earned. T-bills are issued in denominations of \$10,000 (auction) and \$1,000 increments thereafter.

Russell 2000 VI

The Russell 2000 Value Index is representative of the U.S. market for smaller capitalization stocks containing those companies in the Russell 2000 Index with lower price-to-book ratios and lower forecasted growth.

S&P 500

The S&P 500 has been widely regarded as the best single gauge of the large cap U.S. equities market since the index was first published in 1957. The index has over \$5.58 trillion benchmarked, with index assets comprising approximately \$1.31 trillion of this total. The index includes 500 leading companies in leading industries of the U.S. economy, capturing 75% coverage of U.S. equities. This index includes dividend reinvestment.

Indices are unmanaged and have no expenses. You cannot invest directly in an index.

GLOSSARY OF TERMS

Alpha is a mathematical estimate of risk-adjusted return expected from a portfolio above and beyond the benchmark return at any point in time.

American Depositary Receipts (ADRs) are receipts for shares of a foreign-based corporation held in the vault of a U.S. bank.

Average Portfolio Beta is a measure of the sensitivity of a benchmark or portfolio's rates of return to changes against a market return. The market return is the S&P 500 Index. It is the coefficient measuring a stock or a portfolio's relative volatility.

Capitalization is defined as the following: Mega (Above \$100 billion), Large (\$12 to \$100 billion), Medium (\$2.5 - \$12 billion), Small (\$.50 - \$2.5 billion) and Micro (below \$.50 billion).

Downside Risk is a measure of the risk associated with achieving a specific target return. This statistic separates portfolio volatility into downside risk and upside uncertainty. The downside considers all returns below the target return, while the upside considers all returns equal to or above the target return.

Duration is a measure of price sensitivity expressed in years.

Information Ratio is a measure of the investment manager's skill to add active value against a given benchmark relative to how stable that active return has been. Essentially, the information ratio explains how significant a manager's alpha is. Therefore, the higher the information ratio, the more significant the alpha.

Investment Grade Bonds are those rated by Standard & Poor's AAA (highest rated), AA, A or BBB (or equivalent rating by other rating agencies or, in the case of securities not rated, by the investment manager).

Price/Earnings Ratio (P/E Ratio) shows the multiple of earnings at which a stock sells. Determined by dividing current stock price by current earnings per share (adjusted for stock splits). Earnings per share for the P/E ratio are determined by dividing earnings for past 12 months by the number of common shares outstanding. The P/E ratio shown here is calculated by the harmonic mean.

R² (R-Squared)/Portfolio Diversification indicates the proportion of a security's total variance that is benchmark-related or is explained by variations in the benchmark.

Sharpe Ratio measures the efficiency, or excess return per unit of volatility, of a manager's returns. It evaluates managers' performance on a volatility-adjusted basis.

Standard Deviation is a statistical measure of historical variability or spread of returns around a mathematical average return that was produced by the investment manager over a given measurement period. The higher the standard deviation, the greater the variability in the investment manager's returns relative to its average return.

Tracking Error represents the standard deviation of the difference between the performance of the investment strategy and the benchmark. This provides a historical measure of the variability of the investment strategy's returns relative to its benchmark.