

Evercore Asset Management, LLC

55 East 52nd Street, 23rd Floor
New York, New York 10055

Style: Small Cap Value
Firm Assets Under Management: \$476.4 million[^]
Firm Strategy Assets Under Management: \$246.0 million[^]
Year Founded: 2005
Professional Staff: 16[^]
Firm Ownership: 51% Evercore Partners, 49% EAM founding partners
CG IAR Status: Approved

PRODUCT OVERVIEW

Evercore Asset Management ("Evercore") Small Cap Value strategy is a concentrated deep value portfolio designed to provide significant outperformance over full market cycles of 3-5 years. The portfolio invests in U.S. equity securities with market capitalizations of \$200 million to \$2 billion. Holdings generally range between 40-60 names. Portfolio construction is bottom-up, one stock at a time, based on extensive fundamental research. The investment team follows a disciplined framework that is consistent over time resulting in a portfolio that exhibits strong value characteristics such as low P/E, P/B, and high dividend yield. The most appropriate benchmark for the strategy is the Russell 2000 Value index.

TARGET PORTFOLIO CHARACTERISTICS

Number of stock holdings:	40 to 60
Average dividend yield:	Above the S&P 500 Index
P/E ratio:	Below the S&P 500 Index
Cash level over market cycle:	1 to 5%
Risk (standard deviation):	Above the S&P 500 Index
Average turnover rate:	25 to 30%
Use ADRs:	No
Capitalization:	Medium and Small companies

RISK CONSIDERATIONS

Investing in securities entails risks, including: Small-cap stocks may be subject to a higher degree of risk than more established companies' securities, including higher volatility. The illiquidity of the small-cap market may adversely affect the value of these investments. When investing in value securities, the market may not necessarily have the same value assessment as the manager, and, therefore, the performance of the securities may decline.

MANAGER'S INVESTMENT PROCESS

- Idea Generation: Quantitative screen used to focus research effort and to identify companies selling at a deep discount
- Rigorous Analysis: Fundamental research conducted to understand nature of investment controversy and to forecast long-term normalized earnings power
- Research Review: Meeting of the entire investment team to discuss the merits of the analyst's research
- Final Decision: Chief Investment Officer makes final decision to add name to the portfolio
- Monitor: Analysts continually monitors and confirms investment thesis

MANAGER'S INVESTMENT STRATEGY

- ☐ Top-down / portfolio structures based on economic trends
☒ Bottom-up / portfolio structure based on individual securities

% PROCESS BASED ON

- 0 Asset allocation - cash vs. stock
0 Industry or sector weighting
100 Stock Selection

PORTFOLIO STATISTICS

	-----09/11-----			03/11
	Evercore	R2000 Val	S&P 500 Index	Evercore
Number of stock holdings	—	1,345	500	—
Weighted average dividend yield	—	2.5%	2.4%	1.0%
Weighted average P/E ratio [†]	—	10.27x	12.33x	16.15x
Weighted average portfolio beta	—	1.29	0.98	—
Mega capitalization ⁺	0.0%	0.0%	31.7%	0.0%
Large capitalization ⁺	0.0%	0.0%	51.3%	0.0%
Medium capitalization ⁺	0.0%	1.8%	16.6%	0.0%
Small capitalization ⁺	0.0%	67.0%	0.5%	0.0%
Micro capitalization ⁺	0.0%	31.2%	0.0%	0.0%

PORTFOLIO'S EQUITY SECTOR WEIGHTINGS ⁺

	-----09/11-----			03/11
Sector	Evercore	R2000 Val	S&P 500 Index	Evercore
Energy	—	4.73	11.63	4.50
Materials	—	4.79	3.36	0.00
Industrials	—	14.43	10.27	11.85
Consumer Discretionary	—	11.41	10.57	22.66
Consumer Staples	—	3.11	11.76	6.59
Health Care	—	5.32	12.14	0.00
Financials	—	36.28	13.59	36.28
Information Technology	—	11.05	19.44	2.01
Telecomm Services	—	0.72	3.29	0.00
Utilities	—	7.77	3.97	2.08
Cash/Cash Equivalents	—	0.00	0.00	14.02

PORTFOLIO'S ALLOCATION HISTORY (%)⁺

	09/11	06/11	03/11	12/10
U.S. Stocks	0	91	100	91
Cash/Cash Equivalents	0	9	0	9

PORTFOLIO'S TOP FIVE EQUITY HOLDINGS

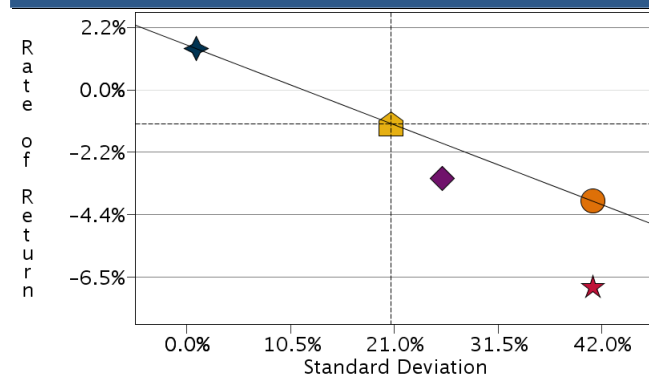
	%
---Data Not Available---	—
	—
	—
	—
	—

[^]As of 03/31/2010. Information as of 09/30/2011 is not yet available.

[†]The P/E used here is calculated by the harmonic mean.

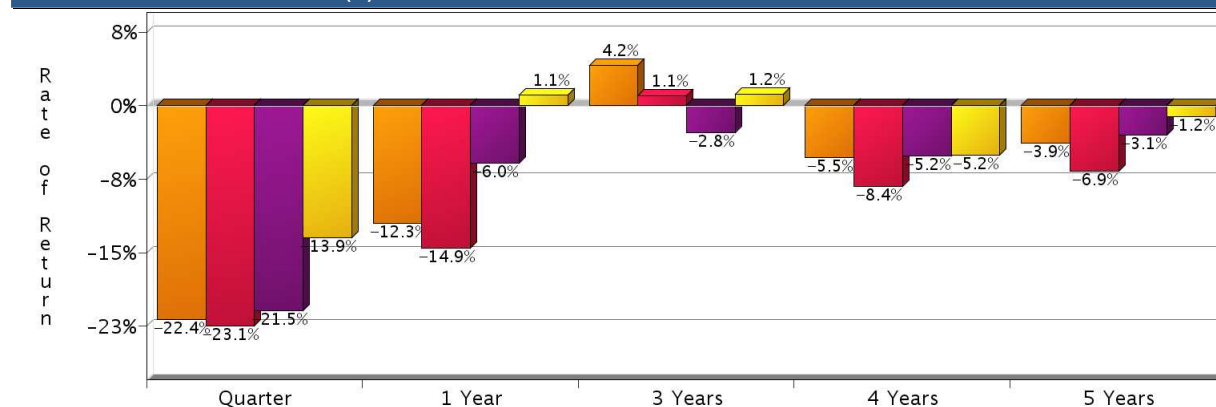
⁺Total may not equal 100% due to rounding.

RISK/RETURN ANALYSIS – 5 YEARS ENDING 09/30/11



	STD	ROR
Evercore (Gross)	41.10	-3.88
Evercore (Net)	41.09	-6.89
Russell 2000 Value Index	25.85	-3.08
S&P 500 Index	20.68	-1.18
90-Day T-Bills	0.95	1.44

AVERAGE ANNUAL TOTAL RETURN (%) – PERIODS ENDING 09/30/11



INVESTMENT RESULTS

	Annual Rates of Return (%)					5 Year - Ending 09/30/11	
	2006*	2007	2008	2009	2010	Annualized	Std. Dev.
Evercore (Gross)	-0.96	-17.25	-45.13	62.96	33.67	-5.46	45.07
Evercore (Net)	-3.27	-19.94	-47.13	58.36	29.81	-8.43	45.05
Russell 2000 Value Index	8.79	-9.78	-28.93	20.57	24.50	-5.24	28.49
S&P 500 Index	11.12	5.49	-37.00	26.46	15.06	-5.15	22.73

*04/01/2006-12/31/2006

PORTFOLIO'S QUARTERLY RETURNS (%)

	Quarter 1		Quarter 2		Quarter 3		Quarter 4	
	Gross	Net	Gross	Net	Gross	Net	Gross	Net
2006			-4.03	-4.81	-5.66	-6.44	9.39	8.61
2007	7.77	6.99	3.54	2.76	-15.86	-16.64	-11.86	-12.64
2008	-9.92	-10.70	-22.08	-22.86	14.02	13.24	-31.44	-32.22
2009	-21.45	-22.23	51.03	50.25	35.56	34.78	1.33	0.55
2010	16.99	16.21	-12.80	-13.58	13.27	12.49	15.68	14.90
2011	0.82	0.04	-3.02	-3.77	-22.44	-23.07		

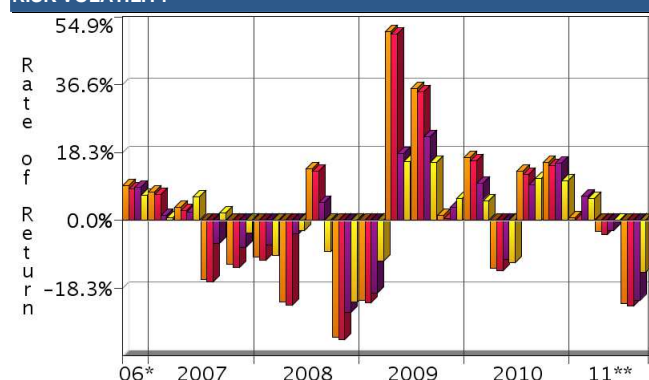
Related

Select UMA

PORTFOLIO'S RISK STATISTICS – PERIODS ENDING 09/30/11^{1,2}

	3 Year	5 Year
Standard Deviation	48.80%	41.10%
Standard Deviation of Primary Benchmark	32.52%	25.85%
Sharpe Ratio	0.08	-0.13
Sharpe Ratio of Primary Benchmark	-0.09	-0.17
Alpha	11.89%	4.15%
Beta	1.40	1.46
Downside Risk	5.74%	10.85%
R-Squared	0.87	0.84
Tracking Error	21.71%	20.44%
Information Ratio	0.32	-0.04

RISK VOLATILITY



*10/01/06-12/31/06 **01/01/11-09/30/11

	Number Of	Up Qtrs.	Down Qtrs.
Evercore (Gross)	11	9	9
Evercore (Net)	11	9	9
Russell 2000 Value Index	11	9	9
S&P 500 Index	12	8	8

PORTFOLIO DIVERSIFICATION - R² (INCEPTION THROUGH 09/11)*

	R ²
Evercore vs. S&P 500 Index	0.67
Evercore vs. Russell 2000 Value Index	0.84

*Statistics are calculated using gross of fee performance only.

1. Statistics are calculated using gross of fee performance only.
2. Russell 2000 Value Index was used as the primary benchmark and the 90-Day U.S. T-Bill Index as the risk-free benchmark.

See page 3 for a discussion of the sources of the performance data used to calculate the performance results and related analyses on page 2.

Past performance is no guarantee of future results. This profile is not complete without pages 3 and 4, which contain important notes, including disclosures about the composite, index descriptions and a glossary of terms. Information shown is as of September 30, 2011, unless otherwise noted. All data are subject to change.

IMPORTANT NOTES AND DISCLOSURES

COMPOSITE DISCLOSURES

Past performance is no guarantee of future results. Actual individual account results may differ from the performance shown in this profile. There is no guarantee that this investment strategy will work under all market conditions. Do not use this profile as the sole basis for your investment decisions.

Performance results in this profile are calculated assuming reinvestment of dividends and income. Returns for more than one year are annualized and based on quarterly data. Returns for periods of less than a calendar year show the total return for the period and are not annualized.

Sources of Performance Results and Other Data: The performance data and certain other information for this strategy (including the data on page 1 of this profile) reflect the investment manager's results in managing Morgan Stanley Smith Barney Fiduciary Services program accounts in the Morgan Stanley channel or the Smith Barney channel, or the investment manager's results in managing accounts and investment products, in the same or a substantially similar investment discipline. This information for the investment manager is presented solely to provide information about accounts that were managed according to investment objectives and strategies the same or substantially similar to the corresponding investment discipline in the Select UMA program. Although the Fiduciary Services and Select UMA programs are both Morgan Stanley managed account programs, the performance results and other features of similar investment disciplines in the two programs may differ due to investment and operational differences. For example, the individual investment disciplines in the Select UMA accounts may contain fewer securities, which would lead to a more concentrated portfolio. The automatic rebalancing, wash sale loss and tax-harvesting features of the Select UMA program, which are not available in Fiduciary Services, also could cause differences in performance. Accordingly, the performance of the accounts in the Fiduciary Services program is not, and may differ significantly from, the performance of the accounts in the Select UMA program and should not be considered indicative of or a substitute for Select UMA performance. Similarly, performance results of the investment manager's composites may differ from those of Select UMA accounts managed in the same or a substantially similar investment discipline.

Related Performance:

Evercore Asset Management ("Evercore") Small Cap Value performance represents all fee and non-fee paying discretionary and non-discretionary accounts managed by Evercore.

Select UMA Performance:

Gross Performance: Evercore's gross results do not reflect a deduction of any investment advisory fees or program fees, charged by Evercore or Morgan Stanley Smith Barney, but are net of commissions charged on securities transactions.

Net Performance for all Periods: Net performance results reflect a deduction of .78% quarterly. This consists of three components: 0.625% maximum quarterly MSSB Advisory Fee and 0.03% maximum quarterly Program Overlay Fee (which, together cover the services provided by Morgan Stanley Smith Barney), plus .125% quarterly SMA Manager Fees (being the fee currently charged by Evercore to new clients for managing their assets in the Select UMA program). The SMA Manager Fees may differ from manager to manager, and managers may change their fee to new clients from time to time. If you select this manager for your account, check the SMA Manager Fees specified in the written client agreement, in case these have changed since you received this profile.

Morgan Stanley Smith Barney program fees are usually deducted quarterly, and have a compounding effect on performance. The Morgan Stanley Smith Barney program fee, which differs among programs and clients, is described in the applicable Morgan Stanley Smith Barney ADV brochure, which is available at www.smithbarney.com/ADV or on request from your Financial Advisor or Private Wealth Advisor.

Focus List, Approved List, and Watch Status:

Consulting Group Investment Advisor Research ("CG IAR") uses two methods to evaluate investment products in applicable advisory programs. In general, strategies that have passed a more thorough evaluation may be placed on the "Focus List", while strategies that have passed thorough a different and less comprehensive evaluation process may be placed on the "Approved List". Sometimes an investment product may be evaluated using the Focus List process but then placed on the Approved List instead of the Focus List.

Past performance is no guarantee of future results. This profile is not complete without pages 3 and 4, which contain important notes, including disclosures about the composite, index descriptions and a glossary of terms. Information shown is as of September 30, 2011, unless otherwise noted. All data are subject to change.

Investment products may move from the Focus List to the Approved List, or vice versa. CG IAR may also determine that an investment product no longer meets the criteria under either evaluation process and will no longer be recommended in investment advisory programs (in which case the investment product is given a "Not Approved" status).

CG IAR has a "Watch" policy and may describe a Focus List or Approved List investment product as being on "Watch" if CG IAR identifies specific areas that (a) merit further evaluation by CG IAR and (b) may, but are not certain to, result in the investment product becoming "Not Approved". The Watch period depends on the length of time needed for CG IAR to conduct its evaluation and for the investment manager to address any concerns. CG IAR may, but is not obligated to, note the Watch status in this report with a "W" or "Watch" on the cover page.

For more information on the Focus List, Approved List, and Watch processes, please see the applicable Morgan Stanley Smith Barney ADV brochure. Your Financial Advisor or Private Wealth Advisor can provide on request a copy of a paper entitled "Manager Research and Selection: A Disciplined Process".

ADDITIONAL DISCLOSURES

The information about a representative account is for illustrative purposes only. Actual account holdings, performance and other data will vary depending on the size of an account, cash flows within an account, and restrictions on an account. Holdings are subject to change daily. The information in this profile is not a recommendation to buy, hold or sell securities.

Actual portfolio statistics may vary from target portfolio characteristics.

The investment manager may use the same or substantially similar investment strategies, and may hold similar portfolios of investments, in other portfolios or products it manages (including mutual funds). These may be available at Morgan Stanley Smith Barney or elsewhere, and may cost an investor more or less than this strategy in Morgan Stanley Smith Barney's Select UMA program.

The portfolio may, at times, invest in exchange-traded funds (ETFs), which are a form of equity security in seeking to maintain continued full exposure to the broad equity market.

Morgan Stanley Smith Barney investment advisory programs may require a minimum asset level and, depending on your specific investment objectives and financial position, may not be suitable for you. Investment advisory program accounts are opened pursuant to a written client agreement.

The investment manager acts independently of, and is not an affiliate of, Morgan Stanley Smith Barney.

Morgan Stanley Smith Barney LLC Member SIPC.

INDEX DESCRIPTIONS

90-Day T-Bills

The 90-Day Treasury Bill is a short-term obligation issued by the United States government. T-bills are purchased at a discount to the full face value, and the investor receives the full value when they mature. The difference of 'discount' is the interest earned. T-bills are issued in denominations of \$10,000 (auction) and \$1,000 increments thereafter.

Russell 2000 Value Index

The Russell 2000 Value Index is representative of the U.S. market for smaller capitalization stocks containing those companies in the Russell 2000 Index with lower price-to-book ratios and lower forecasted growth.

S&P 500 Index

Widely regarded as the best single gauge of the U.S. equities market, this world-renowned index includes a representative sample of 500 leading companies in leading industries of the U.S. economy. Although the S&P 500

focuses on the large-cap segment of the market, with over 80% coverage of U.S. equities, it is also an ideal proxy for the total market.

Indices are unmanaged and have no expenses. You cannot invest directly in an index.

GLOSSARY OF TERMS

Alpha is a mathematical estimate of risk-adjusted return expected from a portfolio above and beyond the benchmark return at any point in time.

American Depositary Receipts (ADRs) are receipts for shares of a foreign-based corporation held in the vault of a U.S. bank.

Average Portfolio Beta is a measure of the sensitivity of a benchmark or portfolio's rates of return to changes against a market return. The market return is the S&P 500 Index. It is the coefficient measuring a stock or a portfolio's relative volatility.

Capitalization is defined as the following: Mega (\$50.0 billion and Above), Large (\$11.0 - \$50.0 billion), Medium (\$2 - \$11.0 billion), Small (\$500m - \$2 billion) and Micro (below \$500 million).

Downside Risk is a measure of the risk associated with achieving a specific target return. This statistic separates portfolio volatility into downside risk and upside uncertainty. The downside considers all returns below the target return, while the upside considers all returns equal to or above the target return.

Duration is a measure of price sensitivity expressed in years.

Information Ratio is a measure of the investment manager's skill to add active value against a given benchmark relative to how stable that active return has been. Essentially, the information ratio explains how significant a manager's alpha is. Therefore, the higher the information ratio, the more significant the alpha.

Investment Grade Bonds are those rated by Standard & Poor's AAA (highest rated), AA, A or BBB (or equivalent rating by other rating agencies or, in the case of securities not rated, by the investment manager).

Price/Earnings Ratio (P/E Ratio) shows the multiple of earnings at which a stock sells. Determined by dividing current stock price by current earnings per share (adjusted for stock splits). Earnings per share for the P/E ratio are determined by dividing earnings for past 12 months by the number of common shares outstanding. The P/E ratio shown here is calculated by the harmonic mean.

R² (R-Squared)/Portfolio Diversification indicates the proportion of a security's total variance that is benchmark-related or is explained by variations in the benchmark.

Sharpe Ratio measures the efficiency, or excess return per unit of volatility, of a manager's returns. It evaluates managers' performance on a volatility-adjusted basis.

Standard Deviation is a statistical measure of historical variability or spread of returns around a mathematical average return that was produced by the investment manager over a given measurement period. The higher the standard deviation, the greater the variability in the investment manager's returns relative to its average return.

Tracking Error represents the standard deviation of the difference between the performance of the investment strategy and the benchmark. This provides a historical measure of the variability of the investment strategy's returns relative to its benchmark.