

Cambiar Investors LLC

200 Columbine Street, Suite 800
Denver, Colorado 80206

Style: Global Equities
Sub-Style: Value-oriented
Firm AUM: \$9.4 billion[^]
Firm Strategy AUM: \$120.8 million

Year Founded: 1973
GIMA Status: Focus
Firm Ownership: Employee-Owned
Professional-Staff: 12^{^^}

PRODUCT OVERVIEW

The Cambiar Global Select strategy is a natural extension of Cambiar's longstanding domestic and international offerings. The portfolio seeks to generate long term capital appreciation and to outperform the MSCI All Country World Index (ACWI). The Cambiar Global Select portfolio will be diversified at both the country and sector levels and is comprised of companies that are held in Cambiar's underlying Large Cap and International strategies. Global Select is intended to be a mid/large cap portfolio. As a guideline, the portfolio will typically not own companies below \$5 billion in market capitalization. On average the portfolio will hold between 45-55 stocks. The Global Select Portfolio is equally weighted, with each position representing approximately 2% of overall assets.

TARGET PORTFOLIO CHARACTERISTICS

Number of stock holdings:	45 to 55
Average dividend yield:	Similar to/Above the S&P 500
Cash level over market cycle:	0 to 10%
Risk (standard deviation):	Above the S&P 500
Average turnover rate:	50 to 80%
Capitalization:	—
Emerging markets exposure:	—

PORTFOLIO'S EQUITY SECTOR WEIGHTINGS *

	-----06/18-----	12/17	
Sector	Cambiar	Index***	Cambiar
Energy	10.70	0.00	9.60
Materials	4.38	0.00	4.40
Industrials	13.25	0.00	13.30
Consumer Discretionary	5.99	0.00	5.90
Consumer Staples	8.16	0.00	11.70
Health Care	14.90	0.00	13.40
Financials	19.06	0.00	20.20
Information Technology	15.13	0.00	14.20
Telecomm Services	1.91	0.00	2.00
Utilities	1.68	0.00	1.90
Real Estate/REITs	0.00	0.00	1.70
Cash/Cash Equivalents	4.84	0.00	1.70

PORTFOLIO STATISTICS

	-----06/18-----	12/17	
	Cambiar	Index***	Cambiar
Number of stock holdings	51	—	52
Wtd avg dividend yield	2.5%	—	2.2%
Wtd avg portfolio beta	1.05	—	—
Mega capitalization +	0.0%	0.0%	0.0%
Large capitalization +	0.0%	0.0%	0.0%
Medium capitalization +	0.0%	0.0%	0.0%
Small capitalization +	0.0%	0.0%	0.0%
Micro capitalization +	0.0%	0.0%	0.0%

PORTFOLIO'S TOP FIVE EQUITY HOLDINGS

	%
Alphabet	2.6
Twitter	2.4
Fast Retailing	2.4
AIA Group	2.4
EOG Resources	2.4

% PROCESS BASED ON

20	Country Weightings
0	Currency Decision
0	Currency Hedge
20	Industry/Sector Selection
0	Asset Allocation
60	Issue Selection

MANAGER'S INVESTMENT STRATEGY

- ☐ Top-down / portfolio structures based on economic trends
☒ Bottom-up / portfolio structure based on individual securities

[^]As of 03/31/2018. Information as of 06/30/2018 is not yet available.

^{^^}As of 06/30/2017. Information as of 06/30/2018 is not yet available.

^{*}Total may not equal 100% due to rounding.

^{***}Index : MSCI World Net

MANAGER'S INVESTMENT PROCESS

- Seeks to outperform the MSCI ACWI Index over a full market cycle.
- Employs an opportunistic best ideas strategy. Holds stocks from Cambiar Large Cap Value, Small Cap Value, and International strategies.
- Bottom-up, relative value investment process that favors undervalued companies that possess a catalyst for future growth.
- Typically invests in companies with a market capitalization of \$5 billion and above.
- Global Select is an equal weighted portfolio with a 2% entry weight that typically holds between 45-55 holdings with a maximum position size of 3.25%.
- Maximum sector, country (ex-U.S), and emerging market weights are 25% (at cost).

RISK CONSIDERATIONS

Investing in securities entails risks, including: International investing should be considered one component of a complete and diversified investment program. Investing in foreign markets entails greater risks than those normally associated with domestic markets such as foreign political, currency, economic and market risks. Equity securities' prices may fluctuate in response to specific situations for each company, industry, market conditions and general economic environment. Companies paying dividends can reduce or cut payouts at any time. Strategies that invest a large percentage of assets in only one industry sector (or in only a few sectors) are more vulnerable to price fluctuation than portfolios that diversify among a broad range of sectors. Growth investing does not guarantee a profit or eliminate risk. The stocks of these companies can have relatively high valuations. Because of these high valuations, an investment in a growth stock can be more risky than an investment in a company with more modest growth expectations. Value investing does not guarantee a profit or eliminate risk. Not all companies whose stocks are considered to be value stocks are able to turn their business around or successfully employ corrective strategies which would result in stock prices that do not rise as initially expected.

PORTFOLIO'S ALLOCATION HISTORY (%) *

	06/18	03/18	12/17	09/17
U.S. Stocks	43	41	41	40
Non-U.S. Stocks	4	6	6	6
ADRs	48	51	51	50
Cash/Cash Equivalents	5	3	2	4

PORTFOLIOS COUNTRY WEIGHTINGS % *

	-----06/18-----		12/17
Country	Cambiar	Index***	Cambiar
United States	43.30	0.00	40.90
France	10.63	0.00	11.70
United Kingdom	9.30	0.00	9.60
Netherlands	8.55	0.00	8.50
Germany	6.90	0.00	1.90
Cash/Cash Equivalents	4.83	0.00	1.70
Japan	4.26	0.00	8.00
Hong Kong	2.39	0.00	2.30
Australia	2.34	0.00	2.10
China	1.92	0.00	2.10

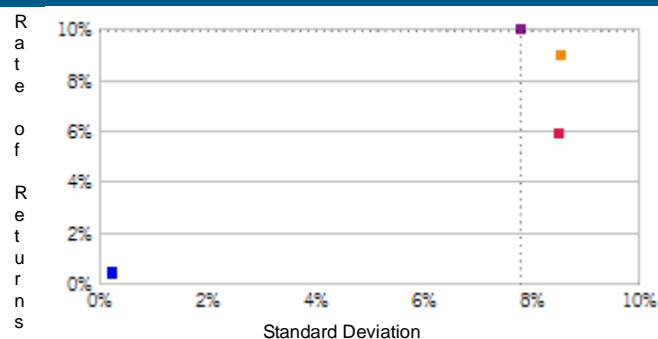
^As of 03/31/2018. Information as of 06/30/2018 is not yet available.

^^As of 06/30/2017. Information as of 06/30/2018 is not yet available.

*Total may not equal 100% due to rounding.

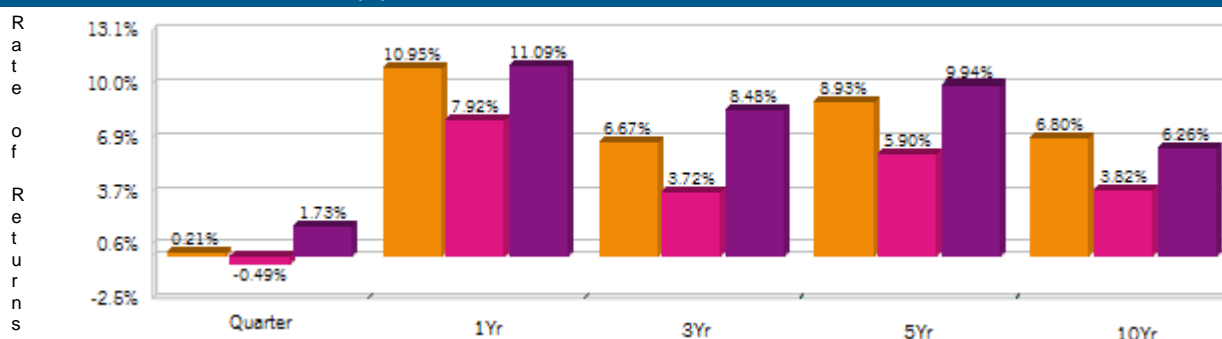
***Index : MSCI World Net

RISK/RETURN ANALYSIS - 5 YEARS ENDING 06/30/18



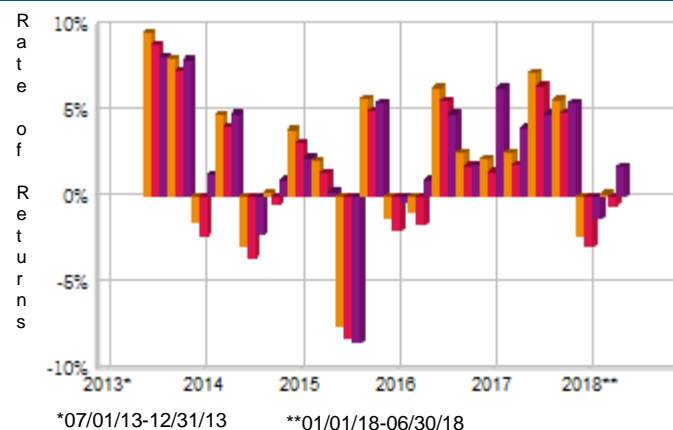
	STD	ROR
Cambiar (Gross)	8.57	8.93
Cambiar (Net)	8.53	5.90
MSCI World Net	7.81	9.94
90-Day T-Bills	0.26	0.39

AVERAGE ANNUAL TOTAL RETURN (%) - PERIODS ENDING 06/30/18



INVESTMENT RESULTS	Annual Rates of Return (%)										10 Year - Ending 06/30/18	
	2008	2009	2010	2011	2012	2013	2014	2015	2016	2017	Annual	Std. Dev.
Cambiar (Gross)	-42.00	52.71	22.83	-7.49	14.19	36.43	0.53	3.71	6.73	18.78	6.80	21.30
Cambiar (Net)	-43.78	48.55	19.48	-9.99	11.02	32.75	-2.34	0.86	3.71	15.49	3.82	21.22
MSCI World Net	-40.71	29.99	11.76	-5.54	15.84	26.68	4.94	-0.88	7.52	22.40	6.26	17.35

RISK VOLATILITY (%)



	Number Of	Up Qtrs.	Down Qtrs.
Cambiar (Gross)		14	6
Cambiar (Net)		12	8
MSCI World Net		16	4

PORTFOLIO'S QUARTERLY RETURNS (%)

	Quarter1		Quarter2		Quarter3		Quarter4	
	Gross	Net	Gross	Net	Gross	Net	Gross	Net
2008	-6.04	-6.75	11.96	11.23	-27.28	-27.86	-24.18	-24.87
2009	-6.79	-7.50	25.15	24.38	23.00	22.20	6.43	5.67
2010	4.79	4.02	-11.43	-12.05	14.92	14.16	15.17	14.39
2011	7.37	6.63	-0.50	-1.19	-21.13	-21.71	9.80	9.11
2012	11.61	10.86	-8.53	-9.20	6.57	5.83	4.96	4.21
2013	9.46	8.73	5.23	4.50	9.59	8.85	8.08	7.34
2014	-1.51	-2.24	4.80	4.06	-2.83	-3.53	0.24	-0.48
2015	3.93	3.17	2.10	1.40	-7.52	-8.17	5.69	4.99
2016	-1.24	-1.99	-0.94	-1.63	6.37	5.64	2.56	1.82
2017	2.21	1.48	2.61	1.89	7.20	6.46	5.66	4.92
2018	-2.25	-2.91	0.21	-0.49				

Related

Select UMA

PORTFOLIO'S RISK STATISTICS - PERIODS ENDING 06/30/18 ^{1 2}

	3 Year	5 Year
Standard Deviation	8.61%	8.57%
Standard Deviation of Primary Benchmark	8.32%	7.81%
Sharpe Ratio	0.70	1.00
Sharpe Ratio of Primary Benchmark	0.94	1.22
Alpha	-1.27%	-1.01%
Beta	0.95	1.01
Downside Risk	3.15%	2.75%
R-Squared	0.83	0.85
Tracking Error	3.53%	3.31%
Information Ratio	-0.51	-0.30

PORTFOLIO DIVERSIFICATION - R²(INCEPTION THROUGH 12/14)+

Cambiar vs. MSCI World Net	R ² 0.93
----------------------------	------------------------

+Statistics are calculated using gross of fee performance only.

1. Statistics are calculated using gross of fee performance only.
2. MSCI World Net was used as the primary benchmark and the 90-Day T-Bills Index as the risk-free benchmark.

See important notes and disclosures pages for a discussion of the sources of the performance data used to calculate the performance results and related analyses shown above.

IMPORTANT NOTES AND DISCLOSURES

COMPOSITE DISCLOSURES

Past performance is no guarantee of future results. Actual individual account results may differ from the performance shown in this profile. There is no guarantee that this investment strategy will work under all market conditions. Do not use this profile as the sole basis for your investment decisions.

Performance results in this profile are calculated assuming reinvestment of dividends and income. Returns for more than one year are annualized and based on quarterly data. Returns for periods of less than a calendar year show the total return for the period and are not annualized.

Sources of Performance Results and Other Data: The performance data and certain other information for this strategy (including the data on page 1 of this profile) reflect the investment manager's results in managing Morgan Stanley program accounts, or the investment manager's results in managing accounts and investment products, in the same or a substantially similar investment discipline. (For periods through June 2012, the Fiduciary Services program operated through two channels - Morgan Stanley channel and the Smith Barney channel - and any performance and other data relating to Fiduciary Services accounts shown here for these periods is calculated using accounts in only one of the these channels.) This information for the investment manager is presented solely to provide information about accounts that were managed according to investment objectives and strategies the same or substantially similar to the corresponding investment discipline in the Select UMA program. Although the Fiduciary Services and Select UMA programs are both Morgan Stanley managed account programs, the performance results and other features of similar investment disciplines in the two programs may differ due to investment and operational differences. For example, the individual investment disciplines in the Select UMA accounts may contain fewer securities, which would lead to a more concentrated portfolio. The automatic rebalancing, wash sale loss and tax-harvesting features of the Select UMA program, which are not available in Fiduciary Services, also could cause differences in performance. Accordingly, the performance of the accounts in the Fiduciary Services program is not, and may differ significantly from, the performance of the accounts in the Select UMA program and should not be considered indicative of or a substitute for Select UMA performance. Similarly, performance results of the investment manager's composites may differ from those of Select UMA accounts managed in the same or a substantially similar investment discipline.

Related Performance:

Cambiar's Global Select Composite was created February 28, 1998. Prior to June 2010, the composite was named the Global Equity Composite. The Global Select Composite includes fee-paying, taxable and tax-exempt, fully discretionary portfolios whose records are maintained on Cambiar's systems and invest in domestic and international equities and have a minimum asset level of \$100,000. The Global Select Composite contains proprietary assets. Portfolio returns have been asset-weighted in compiling the composite from 2000 to the present. For the periods of 2013 to the present, this composite contains accounts with both gross and pure gross performance. Pure gross, applicable to SMA portfolios, has not been reduced by transaction costs and is supplemental information. Brokerage firms which sponsor SMA fee programs apply bundled fees which may include transactions costs, investment management, portfolio monitoring, consulting services, and in some cases, custodial service fees. Cambiar has complete records supporting the composite performance provided in this presentation. For certain periods prior to January 1, 2015, however, Cambiar does not have all of the records that support the basis of the performance for certain non-marketed portfolios and composites that are part of the firm's claim of GIPS compliance. The lack of records for certain non-marketed composites is a result, in part, of third-party computer file deletions or purges and/or the inability of certain sponsors to provide Cambiar with complete historical performance data or system access and the firm's historical record retention or related practices. The firm has performed an exhaustive review to locate such records. The firm is relying on the Act of God record exclusion to enable the firm to claim GIPS compliance for these periods. A list and description of Cambiar's composites and policies for valuing portfolios, calculating performance, and preparing compliant presentations are available upon request.

Morgan Stanley Performance:

The composite consists of **88** account(s) with a market value of **\$13.4 million** as of **06/30/2018**. In this profile, the performance from May 1, 2016, consists of the performance of all single style Select UMA accounts managed by the investment manager in this strategy, subject to any other limitations stated in this profile. Performance composites calculated by Morgan Stanley include all fee-paying portfolios with no investment restrictions. New accounts are included beginning with the second full calendar month of performance. Terminated accounts are removed in the month in which they terminate (but prior performance of terminated accounts is retained). Performance is calculated on a total return basis and by asset weighting the individual portfolio returns using the beginning of period values.

Gross Performance: Cambiar's gross results do not reflect a deduction of any investment advisory fees or program fees, charged by Cambiar or Morgan Stanley, but are net of commissions charged on securities transactions.

Net Performance for all Periods: Net performance results reflect a deduction of 0.7125% quarterly. This consists of three components: 0.625% maximum quarterly MS Advisory Fee and 0.0175% maximum quarterly Program Overlay Fee (which, together cover the services provided by Morgan Stanley), plus 0.07% quarterly SMA Manager Fees (being the fee currently charged by Cambiar to new clients for managing their assets in the Select UMA program). The SMA Manager Fees may differ from manager to manager, and managers may change their fee to new clients from time to time. If you select this manager for your account, check the SMA Manager Fees specified in the written client agreement, in case these have changed since you received this profile. Historical net fees reflect the Advisory Fee Schedule as of March 31, 2014.

Morgan Stanley program fees are usually deducted quarterly, and have a compounding effect on performance. The Morgan Stanley program fee, which differs among programs and clients, is described in the applicable Morgan Stanley ADV brochure, which is available at www.morganstanley.com/ADV or on request from your Financial Advisor or Private Wealth Advisor.

Document approval date August 2015
CRC#1284587 08/2015

Focus List, Approved List, and Watch Status:

Global Investment Manager Analysis ("GIMA") uses two methods to evaluate investment products in applicable advisory programs. In general, strategies that have passed a more thorough evaluation may be placed on the "Focus List", while strategies that have passed through a different and less comprehensive evaluation process may be placed on the "Approved List". Sometimes an investment product may be evaluated using the Focus List process but then placed on the Approved List instead of the Focus List.

Investment products may move from the Focus List to the Approved List, or vice versa. GIMA may also determine that an investment product no longer meets the criteria under either evaluation process and will no longer be recommended in investment advisory programs (in which case the investment product is given a "Not Approved" status).

GIMA has a "Watch" policy and may describe a Focus List or Approved List investment product as being on "Watch" if GIMA identifies specific areas that (a) merit further evaluation by GIMA and (b) may, but are not certain to, result in the investment product becoming "Not Approved". The Watch period depends on the length of time needed for GIMA to conduct its evaluation and for the investment manager to address any concerns. GIMA may, but is not obligated to, note the Watch status in this report with a "W" or "Watch" on the cover page.

For more information on the Focus List, Approved List, and Watch processes, please see the applicable Morgan Stanley ADV brochure (www.ms.com/adv). Your Financial Advisor or Private Wealth Advisor can provide on request a copy of a paper entitled "GIMA: At A Glance".

ADDITIONAL DISCLOSURES

The information about a representative account is for illustrative purposes only. Actual account holdings, performance and other data will vary depending on the size of an account, cash flows within an account, and restrictions on an account. Holdings are subject to change daily. The information in this profile is not a recommendation to buy, hold or sell securities.

Actual portfolio statistics may vary from target portfolio characteristics.

The investment manager may use the same or substantially similar investment strategies, and may hold similar portfolios of investments, in other portfolios or products it manages (including mutual funds). These may be available at Morgan Stanley or elsewhere, and may cost an investor more or less than this strategy in Morgan Stanley's Select UMA program.

The portfolio may, at times, invest in exchange-traded funds (ETFs), which are a form of equity security in seeking to maintain continued full exposure to the broad equity market.

Morgan Stanley investment advisory programs may require a minimum asset level and, depending on your specific investment objectives and financial position, may not be suitable for you. Investment advisory program accounts are opened pursuant to a written client agreement.

The investment manager acts independently of, and is not an affiliate of, Morgan Stanley Smith Barney LLC.

Diversification does not guarantee a profit or protect against a loss.

No obligation to notify

Morgan Stanley has no obligation to notify you when information in this profile changes.

Sources of information

Material in this profile has been obtained from sources that we believe to be reliable, but we do not guarantee its accuracy, completeness or timeliness. Third party data providers make no warranties or representations relating to the accuracy, completeness or timeliness of the data they provide and are not liable for any damages relating to this data.

No tax advice

Morgan Stanley and its affiliates do not render advice on legal, tax and/or tax accounting matters to clients. Each client should consult his/her personal tax and/or legal advisor to learn about any potential tax or other implications that may result from acting on a particular recommendation.

Not an ERISA fiduciary

Morgan Stanley is not acting as a fiduciary under either the Employee Retirement Income Security Act of 1974, as amended, or under section 4975 of the Internal Revenue Code of 1986, as amended, in providing the information in this profile.

©2018 Morgan Stanley Smith Barney LLC Member SIPC.

INDEX DESCRIPTIONS

90-Day T-Bills

The 90-Day Treasury Bill is a short-term obligation issued by the United States government. T-bills are purchased at a discount to the full face value, and the investor receives the full value when they mature. The difference of discount is the interest earned. T-bills are issued in denominations of \$10,000 auction and \$1,000 increments thereafter.

MSCI World Net

The MSCI World Index is a free float-adjusted market capitalization weighted index that is designed to measure the equity performance of developed markets. The MSCI World Index consists of the following 23 developed market country indexes: Australia, Austria, Belgium, Canada, Denmark, Finland, France, Germany, Hong Kong, Ireland, Israel, Italy, Japan, Netherlands, New Zealand, Norway, Portugal, Singapore, Spain, Sweden, Switzerland, the United Kingdom, and the United States (as of June 2014). Net total return indices reinvest dividends after the deduction of withholding taxes, using (for international indices) a tax rate applicable to non-resident institutional investors who do not benefit from double taxation treaties.

S&P 500

The S&P 500 Total Return has been widely regarded as the best single gauge of the large cap U.S. equities market since the index was first published in 1957. The index has over \$5.58 trillion benchmarked, with index assets comprising approximately \$1.31 trillion of this total. The index includes 500 leading companies in leading industries of the U.S. economy, capturing 75% coverage of U.S. equities. This index includes dividend reinvestment.

Indices are unmanaged and have no expenses. You cannot invest directly in an index.

GLOSSARY OF TERMS

Alpha is a mathematical estimate of risk-adjusted return expected from a portfolio above and beyond the benchmark return at any point in time.

American Depositary Receipts (ADRs) are receipts for shares of a foreign-based corporation held in the vault of a U.S. bank.

Average Portfolio Beta is a measure of the sensitivity of a benchmark or portfolio's rates of return to changes against a market return. The market return is the S&P 500 Index. It is the coefficient measuring a stock or a portfolio's relative volatility.

Beta is a measure of the sensitivity of a portfolio's rates of return to changes in the market return. It is the coefficient measuring a stock or a portfolio's relative volatility.

Bottom-Up Stock Selection Emphasis primarily on individual stock selection. Considerations of economic and industry factors are of secondary importance in the investment decision-making process.

Capitalization is defined as the following: Mega (Above \$100 billion), Large (\$12 to \$100 billion), Medium (\$2.5 - \$12 billion), Small (\$.50 - \$2.5 billion) and Micro (below \$.50 billion).

Dividend a portion of a company's profit paid to common and preferred shareholders.

Downside Risk is a measure of the risk associated with achieving a specific target return. This statistic separates portfolio volatility into downside risk and upside uncertainty. The downside considers all returns below the target return, while the upside considers all returns equal to or above the target return.

Duration is a measure of price sensitivity expressed in years.

High Grade Corporate Bonds corporate bonds from issuers with credit ratings of AA or AAA.

Information Ratio is a measure of the investment manager's skill to add active value against a given benchmark relative to how stable that active return has been. Essentially, the information ratio explains how significant a manager's alpha is. Therefore, the higher the information ratio, the more significant the alpha.

Investment Grade Bonds are those rated by Standard & Poor's AAA (highest rated), AA, A or BBB (or equivalent rating by other rating agencies or, in the case of securities not rated, by the investment manager).

Price/Book Ratio (P/B) weighted average of the stocks' price divided by book value per share. Book value per share is defined as common equity, including intangibles, divided by shares outstanding times the adjustment factor.

Price/Cash Flow Ratio a ratio used to compare a company's market value to its cash flow. It is calculated by dividing the company's market cap by the company's operating cash flow in the most recent fiscal year (or the most recent four fiscal quarters); or, equivalently, divide the per-share stock price by the per-share operating cash flow.

Price/Earnings Ratio (P/E Ratio) shows the multiple of earnings at which a stock sells. Determined by dividing current stock price by current earnings per share (adjusted for stock splits). Earnings per share for the P/E ratio are determined by dividing earnings for past 12 months by the number of common shares outstanding. The P/E ratio shown here is calculated by the harmonic mean.

Price/Sales Ratio determined by dividing current stock price by revenue per share (adjusted for stock splits). Revenue per share for the P/S ratio is determined by dividing revenue for past 12 months by number of shares outstanding.

R2 (R-Squared)/Portfolio Diversification indicates the proportion of a security's total variance that is benchmark-related or is explained by variations in the benchmark.

Sharpe Ratio measures the efficiency, or excess return per unit of volatility, of a manager's returns. It evaluates managers' performance on a volatility-adjusted basis.

Standard Deviation is a statistical measure of historical variability or spread of returns around a mathematical average return that was produced by the investment manager over a given measurement period. The higher the standard deviation, the greater the variability in the investment manager's returns relative to its average return.

Top-Down/Economic Analysis Emphasis primarily on macroeconomic trends as opposed to bottom-up stock selection.

Tracking Error represents the standard deviation of the difference between the performance of the investment strategy and the benchmark. This provides a historical measure of the variability of the investment strategy's returns relative to its benchmark.

U.S. Treasury Bonds a marketable, fixed interest U.S. government debt security with a maturity of more than 10 years. Treasury bonds make interest payments semi-annually and the income that holders receive is only taxed at the federal level.

Volatility a measure of risk based on the standard deviation of the asset return. Volatility is a variable that appears in option pricing formulas, where it denotes the volatility of the underlying asset return from now to the expiration of the option. There are volatility indexes. Such as a scale of 1-9; a higher rating means higher risk.