

Jennison Associates LLC

466 Lexington Ave.
New York, New York 10017

PRODUCT OVERVIEW

Jennison Associates LLC ("Jennison") Large Cap Value Equity strategy seeks to outperform the Russell 1000® Value benchmark, and, over the long term, the S&P 500 Index, with comparable risk characteristics. Jennison invests in companies it believes are being valued at a discount to their true worth, as defined by the value of their earnings, free cash flow, the value of their assets, their private market value, or some combination of these factors. The investment team determines worth utilizing fundamental research. The firm's proprietary fundamental research has, and will continue to be, the primary source of the strategy's success. As a general principle, the Large Cap Value Equity team believes that most large companies possess normalized levels of returns consistent with normalized levels of growth. While a company's return and growth rate may deviate from their normalized levels over short periods of time, they usually revert to their means over the long term. Therefore, many of the strategy's investments are companies the team expects to benefit from reversion to their long-term means. Jennison believes they can achieve this by exploiting two main market anomalies, information gap and time horizon gap. Jennison's detailed research delves into companies' fundamentals that are less known by the marketplace, and Jennison concentrates on the often overlooked, longer-term operating dynamics of companies, seeking to identify stocks that are currently undervalued because they are temporarily performing below trend. Jennison seeks to identify those instances in which the market is incorrectly extrapolating sub-normal returns and growth rates too far into the future.

TARGET PORTFOLIO CHARACTERISTICS

Number of stock holdings:	50 to 80
Average dividend yield:	Similar to/Below the S&P 500 Index
P/E ratio:	Similar to/Below the S&P 500 Index
Cash level over market cycle:	0 to 5%
Risk (standard deviation):	Similar to/Below the S&P 500 Index
Average turnover rate:	50 to 60%
Use ADRs:	0 to 25%
Capitalization:	Mega, Large and Medium companies

RISK CONSIDERATIONS

Investing in securities entails risks, including: When investing in value securities, the market may not necessarily have the same value assessment as the manager, and, therefore, the performance of the securities may decline.

MANAGER'S INVESTMENT PROCESS

- Internal idea generation and fundamental research
- Bottom-up stock selection
- Rigorous vetting of analyst recommendations
- Portfolio managers jointly make final buy/sell decisions

MANAGER'S INVESTMENT STRATEGY

- ☐ Top-down / portfolio structures based on economic trends
- ☒ Bottom-up / portfolio structure based on individual securities

% PROCESS BASED ON

- 0 Asset allocation - cash vs. stock
- 0 Industry or sector weighting
- 100 Stock Selection

PORTFOLIO'S ALLOCATION HISTORY (%)⁺

	06/11	03/11	12/10	09/10
U.S. Stocks	93	84	0	83
Non-U.S. Stocks	0	0	0	10
ADRs	3	0	0	1
ADRs/Non-U.S. Stocks	0	11	0	10
Ordinaries	0	0	0	0
Closed End Country Equity Funds	0	0	0	0
Webs	0	0	0	0
Country Baskets	0	0	0	0
REITs	0	0	0	1
Cnvt. Bonds	0	0	0	0
Cnvt. Prfds.	0	0	0	0
Futures/Options	0	0	0	0
Non-US Limited Partnership	0	1	0	0
Cash/Cash Equivalents	3	4	0	0

Style: Large Cap Value

Firm Assets Under Management: \$123.9 billion[^]

Firm Strategy Assets Under Management: \$136.0 million

Year Founded: 1969

Professional Staff: 159

Firm Ownership: Prudential Financial, Inc.

Research Status: Approved

PORTFOLIO STATISTICS⁺

	-----06/11-----		-----12/10-----	
	Jennison	R1000 Val	S&P 500 Index	Jennison
Number of stock holdings	67	655	500	67
Weighted average dividend yield	1.3%	2.3%	2.0%	1.1%
Weighted average P/E ratio ¹	13.00x	13.01x	14.79x	15.00x
Weighted average portfolio beta	—	1.03	1.01	—
Mega capitalization ⁺	0.0%	30.6%	33.8%	0.0%
Large capitalization ⁺	0.0%	46.1%	51.8%	0.0%
Medium capitalization ⁺	0.0%	21.0%	14.1%	0.0%
Small capitalization ⁺	0.0%	2.2%	0.2%	0.0%
Micro capitalization ⁺	0.0%	0.0%	0.0%	0.0%

PORTFOLIO'S EQUITY SECTOR WEIGHTINGS⁺

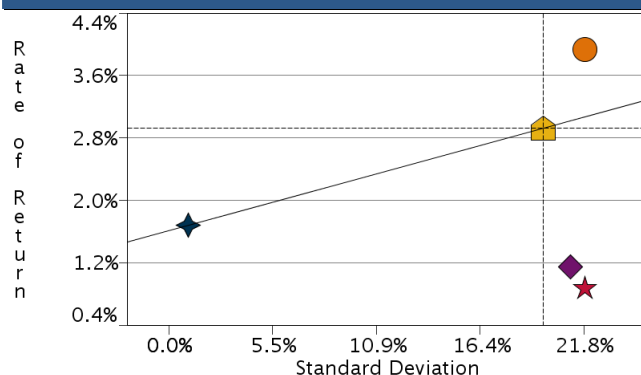
	-----06/11-----		-----12/10-----	
Sector	Jennison	R1000 Val	S&P 500 Index	Jennison
Energy	14.49	12.39	12.67	16.41
Materials	3.66	2.86	3.66	4.43
Industrials	8.71	9.43	11.25	5.81
Consumer Discretionary	16.24	9.04	10.65	14.04
Consumer Staples	7.89	7.17	10.64	11.04
Health Care	7.46	12.22	11.71	8.11
Financials	22.08	26.71	15.15	19.31
Information Technology	13.23	8.65	17.79	14.48
Telecomm Services	3.14	4.71	3.09	2.93
Utilities	3.10	6.81	3.38	3.44
Miscellaneous	0.00	0.00	0.00	0.00
Cash/Cash Equivalents	0.00	0.00	0.00	0.00

PORTFOLIO'S TOP FIVE EQUITY HOLDINGS⁺

	%
Liberty Global	3.0
Comcast Corp.	2.7
CA Inc.	2.6
Mylan Inc	2.4
Flextronics	2.2

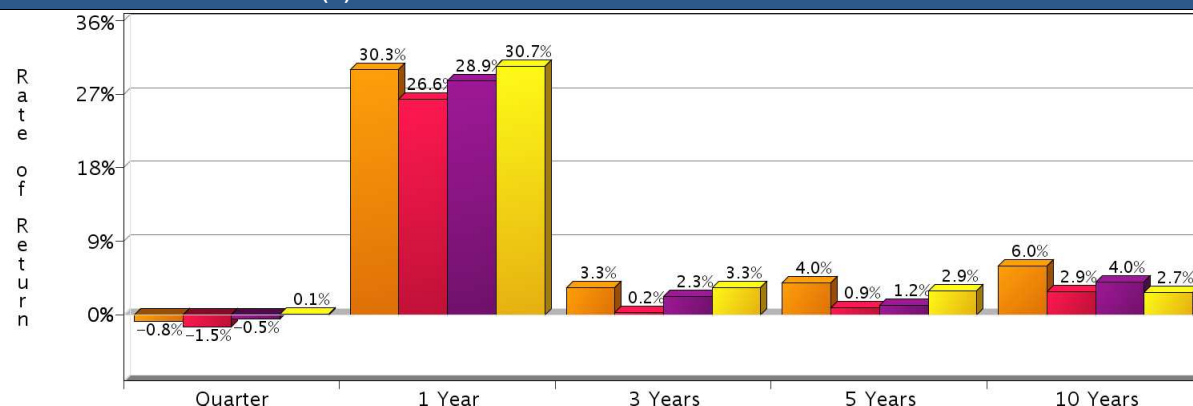
[^]As of 12/31/2010. Information as of 06/30/2011 is not yet available.¹The P/E used here is calculated by the harmonic mean.⁺Total may not equal 100% due to rounding.⁺As represented by Jennison Associates LLC.

RISK/RETURN ANALYSIS – 5 YEARS ENDING 06/30/11



	STD	ROR
Jennison (Gross)	21.89	3.96
Jennison (Net)	21.88	0.87
Russell 1000 Value Index	21.12	1.15
S&P 500 Index	19.70	2.94
90-Day Treasury Bills	1.01	1.69

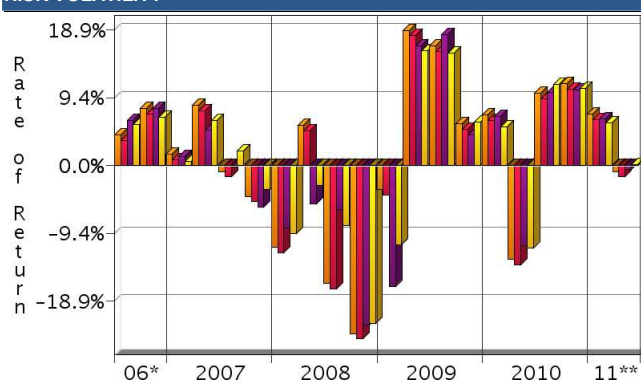
AVERAGE ANNUAL TOTAL RETURN (%) – PERIODS ENDING 06/30/11



INVESTMENT RESULTS

	2001	2002	2003	2004	2005	2006	2007	2008	2009	2010	10 Year - Ending 06/30/11 Annualized	Std. Dev.
Jennison (Gross)	1.57	-20.43	25.52	16.91	18.56	20.37	4.53	-40.00	41.82	14.17	5.98	19.89
Jennison (Net)	-1.44	-22.95	21.98	13.57	15.19	16.96	1.46	-42.04	37.95	10.80	2.85	19.89
Russell 1000 Value Index	-5.59	-15.52	30.03	16.49	7.05	22.25	-0.17	-36.85	19.69	15.51	3.98	18.82
S&P 500 Index	-11.89	-22.10	28.68	10.88	4.91	15.79	5.49	-37.00	26.46	15.06	2.72	18.24

RISK VOLATILITY



*07/01/06-12/31/06 **01/01/11-06/30/11

	Number Of	Up Qtrs.	Down Qtrs.
Jennison (Gross)	12	8	8
Jennison (Net)	12	8	8
Russell 1000 Value Index	11	9	9
S&P 500 Index	13	7	7

PORTFOLIO'S QUARTERLY RETURNS (%)

	Quarter 1		Quarter 2		Quarter 3		Quarter 4	
	Gross	Net	Gross	Net	Gross	Net	Gross	Net
2001	-2.31	-3.06	4.63	3.88	-9.43	-10.18	9.72	8.97
2002	0.66	-0.09	-10.80	-11.55	-20.54	-21.29	11.52	10.77
2003	-6.66	-7.41	17.08	16.34	1.41	0.66	13.26	12.51
2004	4.07	3.32	1.75	1.00	-0.31	-1.06	10.76	10.01
2005	1.69	0.94	3.74	2.99	10.16	9.41	2.02	1.28
2006	7.60	6.85	-0.59	-1.34	4.24	3.48	7.96	7.21
2007	1.61	0.86	8.38	7.63	-0.83	-1.58	-4.28	-5.03
2008	-11.37	-12.12	5.59	4.84	-16.36	-17.11	-23.35	-24.10
2009	-3.33	-4.08	18.80	18.05	16.67	15.92	5.84	5.09
2010	7.02	6.27	-13.00	-13.75	10.04	9.27	11.43	10.62
2011	7.13	6.35	-0.81	-1.53				

Related

Fiduciary Services

PORTFOLIO'S RISK STATISTICS – PERIODS ENDING 06/30/11^{1,2}

	3 Year	5 Year
Standard Deviation	26.68%	21.89%
Standard Deviation of Primary Benchmark	25.89%	21.12%
Sharpe Ratio	0.12	0.10
Sharpe Ratio of Primary Benchmark	0.08	-0.03
Alpha	1.50%	3.08%
Beta	0.95	0.94
Downside Risk	6.40%	5.10%
R-Squared	0.85	0.81
Tracking Error	10.45%	9.57%
Information Ratio	0.10	0.29

PORTFOLIO DIVERSIFICATION - R² (10 YEARS ENDING 06/11)*

	R ²
Jennison vs. S&P 500 Index	0.91
Jennison vs. Russell 1000 Value Index	0.86

*Statistics are calculated using gross of fee performance only.

1. Statistics are calculated using gross of fee performance only.
2. Russell 1000 Value Index was used as the primary benchmark and the 90-Day U.S. T-Bill Index as the risk-free benchmark.

See page 3 for a discussion of the sources of the performance data used to calculate the performance results and related analyses on page 2.

Past performance is no guarantee of future results. This profile is not complete without pages 3 and 4, which contain important notes, including disclosures about the composite, index descriptions and a glossary of terms. Information shown is as of June 30, 2011, unless otherwise noted. All data are subject to change.

IMPORTANT NOTES AND DISCLOSURES

COMPOSITE DISCLOSURES

Past performance is no guarantee of future results. Actual individual account results may differ from the performance shown in this profile. There is no guarantee that this investment strategy will work under all market conditions. Do not use this profile as the sole basis for your investment decisions.

Performance results in this profile are calculated assuming reinvestment of dividends and income. Returns for more than one year are annualized and based on quarterly data. Returns for periods of less than a calendar year show the total return for the period and are not annualized.

Related Performance (Manager's Composite):

For periods before the date on which Morgan Stanley Smith Barney begins to calculate an applicable performance composite for actual Morgan Stanley Smith Barney Fiduciary Services program accounts, the performance composite and certain other information for this strategy (including the data on page 1 of this profile) are based on the investment manager's own composite and data. This composite includes accounts managed by the investment manager according to the same or a substantially similar investment strategy. To provide maximum information to you, the investment manager's own composite is linked to the Morgan Stanley Smith Barney Fiduciary Services composite to create a simulated continuous track record of performance information for the investment strategy. The investment manager's composite may include separately managed accounts, institutional accounts and/or mutual funds. Performance and other data for the investment managers composite may vary from that of Morgan Stanley Smith Barney accounts due to differences such as the availability and weighting of securities, trading implementation or client objectives. Morgan Stanley Smith Barney does not verify composite and other data provided by the investment manager and therefore does not guarantee its accuracy. Some of the accounts in the investment managers composite may have invested in the initial public offering ("IPO") market, whereas accounts held in Morgan Stanley Smith Barney programs do not do so. Since investment managers may use different methods of selecting accounts to be included in their composites and for calculating performance, returns of different investment managers may not be comparable.

Related Performance:

Jennison Associates LLC ("Jennison") Large Cap Value Equity performance prior to 1/1/2007 represents all fully discretionary fee-paying Large Cap Value Equity wrap accounts managed by Jennison. Performance subsequent to 12/31/2006 represents all fully discretionary fee-paying wrap and institutional Large Cap Value Equity accounts.

Fiduciary Services Performance:

Equity Account (Gross): Jennison's gross results do not reflect a deduction of the investment advisory fees charged by Jennison, or program fees, if any, but are net of commissions charged on securities transactions.

Net Performance for all Periods: To demonstrate the effect of Morgan Stanley Smith Barney's fees that would have applied if you had invested in the investment manager strategy's through the Fiduciary Services program, the net results for all periods are calculated by deducting a quarterly fee of 0.75% (equivalent to an annual fee of 3%).

Morgan Stanley Smith Barney program fees are usually deducted quarterly, and have a compounding effect on performance. The Morgan Stanley Smith Barney program fee, which differs among programs and clients, is described in the applicable Morgan Stanley Smith Barney ADV brochure, which is available at www.smithbarney.com/ADV or on request from your Financial Advisor or Private Wealth Advisor.

For periods for which sufficient data is available, the profile shows a composite of client accounts managed by the investment manager in either the Fiduciary Services program in the Morgan Stanley channel (previously called the Morgan Stanley Access program) or the Fiduciary Services program in the Smith Barney channel. Fiduciary Services is a separately managed account program sponsored by Morgan Stanley Smith Barney. If the strategy or similar strategies are available in both the Morgan Stanley and Smith Barney forms of the program, this profile presents the composite for the strategy that is closest to the strategy currently offered in the Fiduciary Services program. If both strategies are equally close, this profile shows the longer of the two composites. Performance and other data for composites for both forms of the program may vary from each other and from composites in other Morgan Stanley Smith Barney programs due to differences such as the availability and weighting of securities, trading implementation or client objectives.

Past performance is no guarantee of future results. This profile is not complete without pages 3 and 4, which contain important notes, including disclosures about the composite, index descriptions and a glossary of terms. Information shown is as of June 30, 2011, unless otherwise noted. All data are subject to change.

Focus List, Approved List, and Watch Status:

Consulting Group Investment Advisor Research ("CG IAR") uses two methods to evaluate investment products in applicable advisory programs. In general, strategies that have passed a more thorough evaluation may be placed on the "Focus List", while strategies that have passed through a different and less comprehensive evaluation process may be placed on the "Approved List". Sometimes an investment product may be evaluated using the Focus List process but then placed on the Approved List instead of the Focus List.

Investment products may move from the Focus List to the Approved List, or vice versa. CG IAR may also determine that an investment product no longer meets the criteria under either evaluation process and will no longer be recommended in investment advisory programs (in which case the investment product is given a "Not Approved" status).

CG IAR has a "Watch" policy and may describe a Focus List or Approved List investment product as being on "Watch" if CG IAR identifies specific areas that (a) merit further evaluation by CG IAR and (b) may, but are not certain to, result in the investment product becoming "Not Approved". The Watch period depends on the length of time needed for CG IAR to conduct its evaluation and for the investment manager to address any concerns. CG IAR may, but is not obligated to, note the Watch status in this report with a "W" or "Watch" on the cover page.

For more information on the Focus List, Approved List, and Watch processes, please see the applicable Morgan Stanley Smith Barney ADV brochure. Your Financial Advisor or Private Wealth Advisor can provide on request a copy of a paper entitled "Manager Research and Selection: A Disciplined Process".

ADDITIONAL DISCLOSURES

The information about a representative account is for illustrative purposes only. Actual account holdings, performance and other data will vary depending on the size of an account, cash flows within an account, and restrictions on an account. Holdings are subject to change daily. The information in this profile is not a recommendation to buy, hold or sell securities.

Actual portfolio statistics may vary from target portfolio characteristics.

The investment manager may use the same or substantially similar investment strategies, and may hold similar portfolios of investments, in other portfolios or products it manages (including mutual funds). These may be available at Morgan Stanley Smith Barney or elsewhere, and may cost an investor more or less than this strategy in the Morgan Stanley Smith Barney Fiduciary Services program.

The portfolio may, at times, invest in exchange-traded funds (ETFs), which are a form of equity security in seeking to maintain continued full exposure to the broad equity market.

Morgan Stanley Smith Barney investment advisory programs may require a minimum asset level and, depending on your specific investment objectives and financial position, may not be suitable for you. Investment advisory program accounts are opened pursuant to a written client agreement.

The investment manager acts independently of, and is not an affiliate of, Morgan Stanley Smith Barney.

Morgan Stanley Smith Barney LLC Member SIPC.

INDEX DESCRIPTIONS

90-Day Treasury Bills

The 90-Day Treasury Bill is a short-term obligation issued by the United States government. T-bills are purchased at a discount to the full face value, and the investor receives the full value when they mature. The difference of 'discount' is the interest earned. T-bills are issued in denominations of \$10,000 (auction) and \$1,000 increments thereafter.

Russell 1000 Value Index

The Russell 1000 Value Index is representative of the U.S. market for large capitalization stocks containing those companies in the Russell 1000 Index with lower price-to-book ratios and lower forecasted growth.

S&P 500 Index

Widely regarded as the best single gauge of the U.S. equities market, this world-renowned index includes a representative sample of 500 leading companies in leading industries of the U.S. economy. Although the S&P 500 focuses on the large-cap segment of the market, with over 80% coverage of U.S. equities, it is also an ideal proxy for the total market.

Indices are unmanaged and have no expenses. You cannot invest directly in an index.

GLOSSARY OF TERMS

Alpha is a mathematical estimate of risk-adjusted return expected from a portfolio above and beyond the benchmark return at any point in time.

American Depositary Receipts (ADRs) are receipts for shares of a foreign-based corporation held in the vault of a U.S. bank.

Average Portfolio Beta is a measure of the sensitivity of a benchmark or portfolio's rates of return to changes against a market return. The market return is the S&P 500 Index. It is the coefficient measuring a stock or a portfolio's relative volatility.

Capitalization is defined as the following: Mega (\$50.0 billion and Above), Large (\$11.0 - \$50.0 billion), Medium (\$2 - \$11.0 billion), Small (\$500m - \$2 billion) and Micro (below \$500 million).

Downside Risk is a measure of the risk associated with achieving a specific target return. This statistic separates portfolio volatility into downside risk and upside uncertainty. The downside considers all returns below the target return, while the upside considers all returns equal to or above the target return.

Duration is a measure of price sensitivity expressed in years.

Information Ratio is a measure of the investment manager's skill to add active value against a given benchmark relative to how stable that active return has been. Essentially, the information ratio explains how significant a manager's alpha is. Therefore, the higher the information ratio, the more significant the alpha.

Investment Grade Bonds are those rated by Standard & Poor's AAA (highest rated), AA, A or BBB (or equivalent rating by other rating agencies or, in the case of securities not rated, by the investment manager).

Price/Earnings Ratio (P/E Ratio) shows the multiple of earnings at which a stock sells. Determined by dividing current stock price by current earnings per share (adjusted for stock splits). Earnings per share for the P/E ratio are determined by dividing earnings for past 12 months by the number of common shares outstanding. The P/E ratio shown here is calculated by the harmonic mean.

R² (R-Squared)/Portfolio Diversification indicates the proportion of a security's total variance that is benchmark-related or is explained by variations in the benchmark.

Sharpe Ratio measures the efficiency, or excess return per unit of volatility, of a manager's returns. It evaluates managers' performance on a volatility-adjusted basis.

Standard Deviation is a statistical measure of historical variability or spread of returns around a mathematical average return that was produced by the investment manager over a given measurement period. The higher the standard deviation, the greater the variability in the investment manager's returns relative to its average return.

Tracking Error represents the standard deviation of the difference between the performance of the investment strategy and the benchmark. This provides a historical measure of the variability of the investment strategy's returns relative to its benchmark.