

ClearBridge Advisors, LLC

620 Eighth Avenue
New York, New York 10018

PRODUCT OVERVIEW

ClearBridge Advisors, LLC ("ClearBridge") Opportunity strategy invests in stocks of companies many of which have relatively small market capitalizations, across several sectors and industries in the market. Portfolio Managers John Goode and Peter Hable employ quantitative and fundamental analyses in identifying this category of stocks, which they believe have a higher probability of potentially outperforming than other names in the same industries and sectors.

TARGET PORTFOLIO CHARACTERISTICS

Number of stock holdings:	25 to 50
Average dividend yield:	Below the S&P 500 Index
P/E ratio:	Above the S&P 500 Index
Cash level over market cycle:	0 to 100%
Risk (standard deviation):	Above the S&P 500 Index
Average turnover rate:	0 to 113%
Use ADRs:	Yes. Due to our strategy, they often meet our stock selection criteria.
Capitalization:	Mega, Large, Medium, Small and Micro companies

RISK CONSIDERATIONS

Investing in securities entails risks, including: Equity portfolios are subject to the basic stock market risk that a particular security, or securities in general, may decrease in value. The stocks of small and medium-sized companies are often associated with higher risk than stocks of larger companies, including higher volatility.

MANAGER'S INVESTMENT PROCESS

- Define the Investment Universe – The Portfolio Managers apply quantitative parameters to identify an initial universe of companies, which may include common stocks in the Russell 3000 Index, ETFs and ADRs.
- Identify Market Sectors that Appear to be Incorrectly Priced – Stocks are evaluated using a proprietary discipline, and quantitative analysis is utilized to help determine which sectors or industries should be overweighted and emphasize individual securities that have key "value" attributes.
- Incorporate Technical Analyses to Gauge Stock Performance – The Portfolio Managers evaluate how well or inadequately a stock has performed, the time period of the outperformance or underperformance, and whether insiders are buying or selling shares in the company;
- Construct Portfolio – The Portfolio Managers build a concentrated portfolio of stocks across market capitalizations, sectors and industries in the market.
- Review Holdings Continuously – All accounts are continually reviewed and managed for risk at every stage in the investment process.

MANAGER'S INVESTMENT STRATEGY

- ☒ Top-down / portfolio structures based on economic trends
- ☒ Bottom-up / portfolio structure based on individual securities

% PROCESS BASED ON

0 Asset allocation - cash vs. stock
19 Industry or sector weighting
81 Stock Selection

PORTFOLIO'S ALLOCATION HISTORY (%)⁺

	06/11	03/11	12/10	09/10
U.S. Stocks	83	80	83	94
Cash/Cash Equivalents	17	20	17	6

Style: Multi Cap Core
Sub-Style: Blend
Firm Assets Under Management: \$52.2 billion[^]
Firm Strategy Assets Under Management: \$249.7 million^{^^}
Year Founded: 2005
Professional Staff: 52[^]
Firm Ownership: Legg Mason, Inc.
CG IAR Status: Focus

PORTFOLIO STATISTICS⁺

	-----06/11-----			12/10
	ClearBridge	R3000	S&P 500 Index	ClearBridge
Number of stock holdings	37	2,969	500	30
Weighted average dividend yield	0.9%	1.8%	2.0%	0.8%
Weighted average P/E ratio ¹	16.59x	15.16x	14.79x	18.81x
Weighted average portfolio beta	1.36	1.05	1.01	1.43
Mega capitalization ⁺	9.6%	26.8%	33.8%	10.4%
Large capitalization ⁺	30.3%	42.5%	51.8%	29.2%
Medium capitalization ⁺	18.2%	21.5%	14.1%	18.4%
Small capitalization ⁺	8.6%	7.9%	0.2%	21.9%
Micro capitalization ⁺	33.3%	1.4%	0.0%	20.0%

PORTFOLIO'S EQUITY SECTOR WEIGHTINGS⁺

	-----06/11-----			12/10
Sector	ClearBridge	R3000	S&P 500 Index	ClearBridge
Energy	17.81	11.57	12.67	15.14
Materials	11.49	4.44	3.66	11.38
Industrials	21.94	11.77	11.25	15.83
Consumer Discretionary	4.94	11.66	10.65	5.17
Consumer Staples	0.00	8.97	10.64	0.00
Health Care	13.02	11.66	11.71	13.93
Financials	17.28	15.88	15.15	20.16
Information Technology	13.51	17.78	17.79	18.39
Telecomm Services	0.00	2.79	3.09	0.00
Utilities	0.00	3.45	3.38	0.00

PORTFOLIO'S TOP FIVE EQUITY HOLDINGS⁺

	%
Compugen Ltd.	9.0
BHP Billiton Ltd. ADS	5.3
National Oilwell Varco Inc.	5.2
ON Semiconductor Corp.	4.5
Halliburton Co.	4.4

[^]As of 09/30/2010. Information as of 06/30/2011 is not yet available.

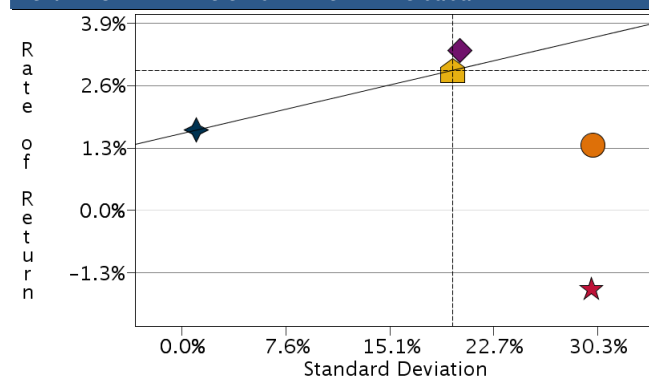
^{^^}As of 06/30/2010. Information as of 06/30/2011 is not yet available.

¹The P/E used here is calculated by the harmonic mean.

⁺Total may not equal 100% due to rounding.

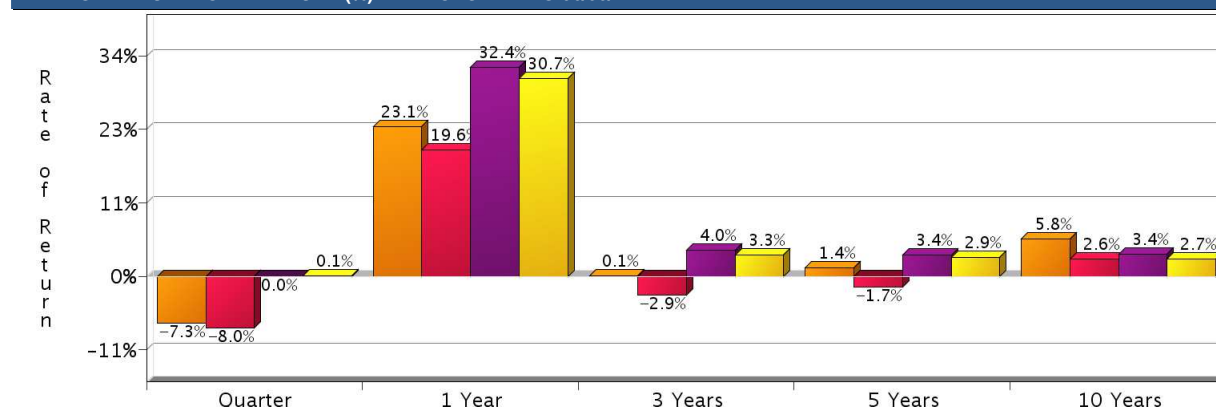
SMBased on a representative actual Morgan Stanley Smith Barney portfolio as calculated by FactSet.

RISK/RETURN ANALYSIS – 5 YEARS ENDING 06/30/11



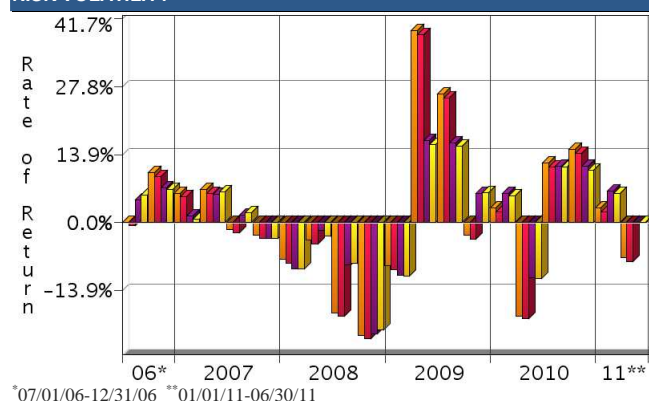
	STD	ROR
ClearBridge (Gross)	29.94	1.36
ClearBridge (Net)	29.82	-1.66
Russell 3000 Index	20.24	3.35
S&P 500 Index	19.70	2.94
90-Day Treasury Bills	1.01	1.69

AVERAGE ANNUAL TOTAL RETURN (%) – PERIODS ENDING 06/30/11



INVESTMENT RESULTS	Annual Rates of Return (%)										10 Year - Ending 06/30/11	
	2001	2002	2003	2004	2005	2006	2007	2008	2009	2010	Annualized	Std. Dev.
ClearBridge (Gross)	7.04	-21.57	63.35	17.57	7.03	16.27	8.68	-44.31	56.40	7.43	5.79	28.79
ClearBridge (Net)	3.86	-24.08	58.77	14.02	3.80	12.90	5.46	-46.07	51.83	4.29	2.63	28.71
Russell 3000 Index	-11.46	-21.54	31.06	11.95	6.12	15.72	5.14	-37.31	28.34	16.93	3.44	18.80
S&P 500 Index	-11.88	-22.10	28.68	10.88	4.91	15.80	5.49	-37.00	26.46	15.06	2.72	18.24

RISK VOLATILITY



	Number Of	Up Qtrs.	Down Qtrs.
ClearBridge (Gross)	10	10	10
ClearBridge (Net)	9	11	11
Russell 3000 Index	12	8	8
S&P 500 Index	13	7	7

PORTFOLIO'S QUARTERLY RETURNS (%)

	Quarter 1		Quarter 2		Quarter 3		Quarter 4	
	Gross	Net	Gross	Net	Gross	Net	Gross	Net
2001	-4.90	-5.65	16.53	15.78	-23.11	-23.86	25.62	24.87
2002	1.88	1.13	-16.83	-17.58	-21.33	-22.08	17.65	16.90
2003	-5.71	-6.43	28.43	27.55	13.62	12.82	18.72	17.91
2004	8.61	7.84	2.95	2.13	-4.89	-5.66	10.56	9.72
2005	-7.57	-8.28	6.99	6.17	4.53	3.78	3.53	2.72
2006	6.30	5.55	-0.83	-1.56	0.07	-0.70	10.23	9.44
2007	6.01	5.23	6.71	5.94	-1.40	-2.16	-2.57	-3.31
2008	-7.57	-8.29	-3.66	-4.38	-18.59	-19.21	-23.18	-23.87
2009	-8.89	-9.64	39.38	38.52	26.40	25.53	-2.56	-3.37
2010	3.01	2.19	-19.19	-19.78	12.17	11.40	15.05	14.20
2011	2.92	2.17	-7.30	-8.00				

Related

Fiduciary Services

PORTFOLIO'S RISK STATISTICS – PERIODS ENDING 06/30/11^{1,2}

	3 Year	5 Year
Standard Deviation	38.13%	29.94%
Standard Deviation of Primary Benchmark	25.09%	20.24%
Sharpe Ratio	0.00	-0.01
Sharpe Ratio of Primary Benchmark	0.15	0.08
Alpha	-3.08%	-1.14%
Beta	1.39	1.34
Downside Risk	10.52%	8.43%
R-Squared	0.83	0.82
Tracking Error	18.40%	14.52%
Information Ratio	-0.21	-0.14

PORTFOLIO DIVERSIFICATION - R² (10 YEARS ENDING 06/11)*

	R ²
ClearBridge vs. S&P 500 Index	0.85
ClearBridge vs. Russell 3000 Index	0.86

*Statistics are calculated using gross of fee performance only.

1. Statistics are calculated using gross of fee performance only.

2. Russell 3000 Index was used as the primary benchmark and the 90-Day U.S. T-Bill Index as the risk-free benchmark.

See page 3 for a discussion of the sources of the performance data used to calculate the performance results and related analyses on page 2.

Past performance is no guarantee of future results. This profile is not complete without pages 3 and 4, which contain important notes, including disclosures about the composite, index descriptions and a glossary of terms. Information shown is as of June 30, 2011, unless otherwise noted. All data are subject to change.

IMPORTANT NOTES AND DISCLOSURES

COMPOSITE DISCLOSURES

Past performance is no guarantee of future results. Actual individual account results may differ from the performance shown in this profile. There is no guarantee that this investment strategy will work under all market conditions. Do not use this profile as the sole basis for your investment decisions.

Performance results in this profile are calculated assuming reinvestment of dividends and income. Returns for more than one year are annualized and based on quarterly data. Returns for periods of less than a calendar year show the total return for the period and are not annualized.

Related Performance (Manager's Composite):

For periods before the date on which Morgan Stanley Smith Barney begins to calculate an applicable performance composite for actual Morgan Stanley Smith Barney Fiduciary Services program accounts, the performance composite and certain other information for this strategy (including the data on page 1 of this profile) are based on the investment manager's own composite and data. This composite includes accounts managed by the investment manager according to the same or a substantially similar investment strategy. To provide maximum information to you, the investment manager's own composite is linked to the Morgan Stanley Smith Barney Fiduciary Services composite to create a simulated continuous track record of performance information for the investment strategy. The investment manager's composite may include separately managed accounts, institutional accounts and/or mutual funds. Performance and other data for the investment managers composite may vary from that of Morgan Stanley Smith Barney accounts due to differences such as the availability and weighting of securities, trading implementation or client objectives. Morgan Stanley Smith Barney does not verify composite and other data provided by the investment manager and therefore does not guarantee its accuracy. Some of the accounts in the investment managers composite may have invested in the initial public offering ("IPO") market, whereas accounts held in Morgan Stanley Smith Barney programs do not do so. Since investment managers may use different methods of selecting accounts to be included in their composites and for calculating performance, returns of different investment managers may not be comparable.

Related Performance:

ClearBridge Advisors, LLC's (ClearBridge) Opportunity performance represents a composite of all fee-paying, fully discretionary ClearBridge Advisors, LLC Opportunity wrap accounts managed by ClearBridge.

Prior to December 2005, Opportunity equity portfolios were managed by a predecessor business to ClearBridge. Legg Mason acquired this business in December 2005. All or substantially all of the individuals responsible for security selection for the Opportunity portfolios immediately prior to December 2005 joined ClearBridge as part of this acquisition.

Equity Account (Gross): ClearBridge's gross results do not reflect a deduction of the investment advisory fees charged by ClearBridge, or program fees, if any, but are net of commissions charged on securities transactions.

Fiduciary Services Performance:

Net Performance for all Periods: To demonstrate the effect of Morgan Stanley Smith Barney's fees that would have applied if you had invested in the investment manager strategy's through the Fiduciary Services program, the net results for all periods are calculated by deducting a quarterly fee of 0.75% (equivalent to an annual fee of 3%).

Morgan Stanley Smith Barney program fees are usually deducted quarterly, and have a compounding effect on performance. The Morgan Stanley Smith Barney program fee, which differs among programs and clients, is described in the applicable Morgan Stanley Smith Barney ADV brochure, which is available at www.smithbarney.com/ADV or on request from your Financial Advisor or Private Wealth Advisor.

For periods for which sufficient data is available, the profile shows a composite of client accounts managed by the investment manager in either the Fiduciary Services program in the Morgan Stanley channel (previously called the Morgan Stanley Access program) or the Fiduciary Services program in the Smith Barney channel. Fiduciary Services is a separately managed account program sponsored by Morgan Stanley Smith Barney. If the strategy or similar strategies are available in both the Morgan Stanley and Smith Barney forms of the program, this profile presents the

composite for the strategy that is closest to the strategy currently offered in the Fiduciary Services program. If both strategies are equally close, this profile shows the longer of the two composites. Performance and other data for composites for both forms of the program may vary from each other and from composites in other Morgan Stanley Smith Barney programs due to differences such as the availability and weighting of securities, trading implementation or client objectives.

Focus List, Approved List, and Watch Status:

Consulting Group Investment Advisor Research ("CG IAR") uses two methods to evaluate investment products in applicable advisory programs. In general, strategies that have passed a more thorough evaluation may be placed on the "Focus List", while strategies that have passed through a different and less comprehensive evaluation process may be placed on the "Approved List". Sometimes an investment product may be evaluated using the Focus List process but then placed on the Approved List instead of the Focus List.

Investment products may move from the Focus List to the Approved List, or vice versa. CG IAR may also determine that an investment product no longer meets the criteria under either evaluation process and will no longer be recommended in investment advisory programs (in which case the investment product is given a "Not Approved" status).

CG IAR has a "Watch" policy and may describe a Focus List or Approved List investment product as being on "Watch" if CG IAR identifies specific areas that (a) merit further evaluation by CG IAR and (b) may, but are not certain to, result in the investment product becoming "Not Approved". The Watch period depends on the length of time needed for CG IAR to conduct its evaluation and for the investment manager to address any concerns. CG IAR may, but is not obligated to, note the Watch status in this report with a "W" or "Watch" on the cover page.

For more information on the Focus List, Approved List, and Watch processes, please see the applicable Morgan Stanley Smith Barney ADV brochure. Your Financial Advisor or Private Wealth Advisor can provide on request a copy of a paper entitled "Manager Research and Selection: A Disciplined Process".

ADDITIONAL DISCLOSURES

The information about a representative account is for illustrative purposes only. Actual account holdings, performance and other data will vary depending on the size of an account, cash flows within an account, and restrictions on an account. Holdings are subject to change daily. The information in this profile is not a recommendation to buy, hold or sell securities.

Actual portfolio statistics may vary from target portfolio characteristics.

The investment manager may use the same or substantially similar investment strategies, and may hold similar portfolios of investments, in other portfolios or products it manages (including mutual funds). These may be available at Morgan Stanley Smith Barney or elsewhere, and may cost an investor more or less than this strategy in the Morgan Stanley Smith Barney Fiduciary Services program.

The portfolio may, at times, invest in exchange-traded funds (ETFs), which are a form of equity security in seeking to maintain continued full exposure to the broad equity market.

Morgan Stanley Smith Barney investment advisory programs may require a minimum asset level and, depending on your specific investment objectives and financial position, may not be suitable for you. Investment advisory program accounts are opened pursuant to a written client agreement.

The investment manager acts independently of, and is not an affiliate of, Morgan Stanley Smith Barney.

Morgan Stanley Smith Barney LLC Member SIPC.

INDEX DESCRIPTIONS

90-Day Treasury Bills

The 90-Day Treasury Bill is a short-term obligation issued by the United States government. T-bills are purchased at a discount to the full face value, and the investor receives the full value when they mature. The difference of 'discount' is the interest earned. T-bills are issued in denominations of \$10,000 (auction) and \$1,000 increments thereafter.

Russell 3000 Index

The Russell 3000 Index measures the performance of the 3,000 largest U.S. companies based on total market capitalization, which represents approximately 98% of the investable U.S. equity market.

S&P 500 Index

Widely regarded as the best single gauge of the U.S. equities market, this world-renowned index includes a representative sample of 500 leading companies in leading industries of the U.S. economy. Although the S&P 500 focuses on the large-cap segment of the market, with over 80% coverage of U.S. equities, it is also an ideal proxy for the total market.

Indices are unmanaged and have no expenses. You cannot invest directly in an index.

GLOSSARY OF TERMS

Alpha is a mathematical estimate of risk-adjusted return expected from a portfolio above and beyond the benchmark return at any point in time.

American Depositary Receipts (ADRs) are receipts for shares of a foreign-based corporation held in the vault of a U.S. bank.

Average Portfolio Beta is a measure of the sensitivity of a benchmark or portfolio's rates of return to changes against a market return. The market return is the S&P 500 Index. It is the coefficient measuring a stock or a portfolio's relative volatility.

Capitalization is defined as the following: Mega (\$50.0 billion and Above), Large (\$11.0 - \$50.0 billion), Medium (\$2 - \$11.0 billion), Small (\$500m - \$2 billion) and Micro (below \$500 million).

Downside Risk is a measure of the risk associated with achieving a specific target return. This statistic separates portfolio volatility into downside risk and upside uncertainty. The downside considers all returns below the target return, while the upside considers all returns equal to or above the target return.

Duration is a measure of price sensitivity expressed in years.

Information Ratio is a measure of the investment manager's skill to add active value against a given benchmark relative to how stable that active return has been. Essentially, the information ratio explains how significant a manager's alpha is. Therefore, the higher the information ratio, the more significant the alpha.

Investment Grade Bonds are those rated by Standard & Poor's AAA (highest rated), AA, A or BBB (or equivalent rating by other rating agencies or, in the case of securities not rated, by the investment manager).

Price/Earnings Ratio (P/E Ratio) shows the multiple of earnings at which a stock sells. Determined by dividing current stock price by current earnings per share (adjusted for stock splits). Earnings per share for the P/E ratio are determined by dividing earnings for past 12 months by the number of common shares outstanding. The P/E ratio shown here is calculated by the harmonic mean.

R² (R-Squared)/Portfolio Diversification indicates the proportion of a security's total variance that is benchmark-related or is explained by variations in the benchmark.

Sharpe Ratio measures the efficiency, or excess return per unit of volatility, of a manager's returns. It evaluates managers' performance on a volatility-adjusted basis.

Standard Deviation is a statistical measure of historical variability or spread of returns around a mathematical average return that was produced by the investment manager over a given measurement period. The higher the standard deviation, the greater the variability in the investment manager's returns relative to its average return.

Tracking Error represents the standard deviation of the difference between the performance of the investment strategy and the benchmark. This provides a historical measure of the variability of the investment strategy's returns relative to its benchmark.