

## Tradition Capital Management, LLC

129 Summit Avenue  
Summit, New Jersey 07901

## PRODUCT OVERVIEW

Tradition Capital Management, LLC ("Tradition") All-Cap Core Long Equity philosophy is built on the belief that wealth is best created and preserved through identifying growing companies trading at a "margin of safety". Tradition defines "margin of safety" as a stock that is trading at a risk-adjusted discount of at least 20% from Tradition's estimated fair value. Tradition's bottom-up process seeks U.S. and foreign based companies with above-average revenue and earnings growth, high financial returns and what the manager believes are sustainable competitive advantages across all levels of market-capitalization. The research-driven process utilizes a proprietary Valuation Model to organize key financial inputs across companies and industries. The model helps Tradition turn qualitative information into quantitative estimates. This enables Tradition to maintain discipline in identifying and buying companies that are trading at considerable risk-adjusted discounts to Tradition's estimate of fair value while reducing the risk of permanent capital impairment.

## TARGET PORTFOLIO CHARACTERISTICS

Number of stock holdings:	40 to 50
Average dividend yield:	Similar to the Russell 3000
P/E ratio:	Below the S&P 500
Cash level over market cycle:	2 to 30%
Risk (standard deviation):	Below the Russell 3000
Average turnover rate:	35 to 55%
Use ADRs:	0 to 25%
Capitalization:	Mega, Large, Medium, Small and Micro companies

## RISK CONSIDERATIONS

Investing in securities entails risks, including: Equity portfolios are subject to the basic stock market risk that a particular security, or securities in general, may decrease in value. The stocks of small and medium-sized companies are often associated with higher risk than stocks of larger companies, including higher volatility.

## MANAGER'S INVESTMENT PROCESS

- Identify companies that they believe exhibit the ability to grow their business value consistently higher than the market, yet are selling at a discount to the manager's estimate of fair market value.
- Tradition's idea list is initially generated from companies above \$100 million in market capitalization. The universe is sent through a 6-factor screen in order to identify what they consider to be quality growth companies. Companies that pass the quantitative screens or meet qualifying attributes are maintained on the Focus List of roughly 200 names. Tradition estimates fair value for each stock on the Focus List, utilizing Tradition's proprietary dividend discount model. This model considers earnings power, growth rate, and cash generating capabilities, financial strength, and stability. Companies selling at a risk-adjusted 20% discount to the manager's estimate of fair value are evaluated for possible inclusion in the portfolio and are subject to qualitative review.
- Qualitative review consists of independent research by Tradition's analysts to tighten the valuation model inputs and confirm the stock's attractiveness. Analysis includes fundamental research to help determine why the stock is trading at a discount and to confirm the company's long-term strength and growth prospects. Important company attributes include brand strength, intellectual property development, scale efficiencies, distribution capabilities, a strong balance sheet, and superb company management. Industry structure is also evaluated and considered. Companies that they believe have good fundamentals and good value are then purchased.
- Tradition's fundamental research advantage is the ability to gather information and use the valuation model to help organize the data in a useful way, turning qualitative information into quantitative estimates, so Tradition can be disciplined in identifying and buying companies that they believe are trading at considerable risk-adjusted discounts to their estimate of fair value. All inputs into Tradition's valuation model, otherwise known as the Focus List, are derived from a level of internal research done on the company and industry. In essence, by following Tradition's disciplined valuation parameters, Tradition is taking advantage of short-term inefficiencies. These inefficiencies can occur in individual companies and through various capitalizations such as small, mid and large-cap.

Style: Multi Cap Core  
Firm Assets Under Management: \$507.0 million<sup>^</sup>  
Firm Strategy Assets Under Management: \$142.0 million<sup>^</sup>  
Year Founded: 2000  
Professional Staff: 10<sup>^</sup>  
Firm Ownership: Employee-Owned  
CG IAR Status: Not Applicable

## PORTFOLIO STATISTICS

	-----03/13-----			09/12
	Tradition	Russell 3000	S&P 500	Tradition
Number of stock holdings	Data Not	2,957	500	—
Weighted average dividend yield	Available	2.0%	2.1%	2.6%
Weighted average P/E ratio <sup>†</sup>	From Mgr.	15.89x	15.92x	—
Weighted average portfolio beta	—	0.98	0.94	—
Mega capitalization <sup>+</sup>	0.0%	31.3%	38.6%	0.0%
Large capitalization <sup>+</sup>	0.0%	42.1%	50.4%	0.0%
Medium capitalization <sup>+</sup>	0.0%	19.0%	10.9%	0.0%
Small capitalization <sup>+</sup>	0.0%	6.5%	0.0%	0.0%
Micro capitalization <sup>+</sup>	0.0%	1.1%	0.0%	0.0%

PORTFOLIO'S EQUITY SECTOR WEIGHTINGS <sup>+</sup>

	-----03/13-----			09/12
Sector	Tradition	Russell 3000	S&P 500	Tradition
Energy	0.00	9.93	10.92	17.00
Materials	0.00	3.86	3.43	5.00
Industrials	0.00	11.27	10.11	12.40
Consumer Discretionary	0.00	12.53	11.63	3.20
Consumer Staples	0.00	9.55	10.96	14.50
Health Care	0.00	12.30	12.53	16.80
Financials	0.00	17.20	15.92	8.20
Information Technology	0.00	17.30	18.02	18.00
Telecomm Services	0.00	2.55	2.97	2.90
Utilities	0.00	3.51	3.51	2.00

## MANAGER'S INVESTMENT STRATEGY

- ☐ Top-down / portfolio structures based on economic trends  
☒ Bottom-up / portfolio structure based on individual securities

PORTFOLIO'S ALLOCATION HISTORY (%)<sup>\*</sup>

	03/13	12/12	09/12	06/12
U.S. Stocks	0	0	88	92
Cash/Cash Equivalents	0	0	12	8

## PORTFOLIO'S TOP FIVE EQUITY HOLDINGS %

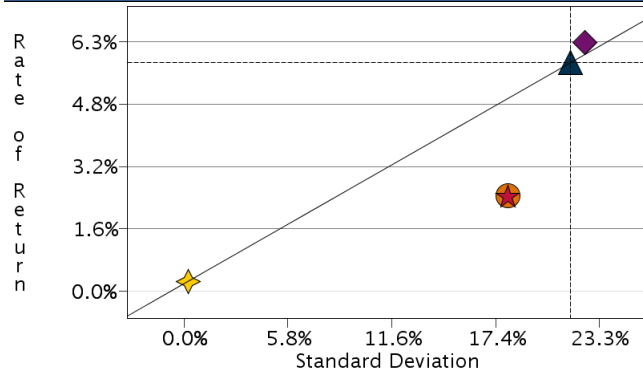
Data Not Available From Manager	—
—	—
—	—
—	—
—	—

## % PROCESS BASED ON

5 Asset allocation - cash vs. stock  
10 Industry or sector weighting  
85 Stock Selection

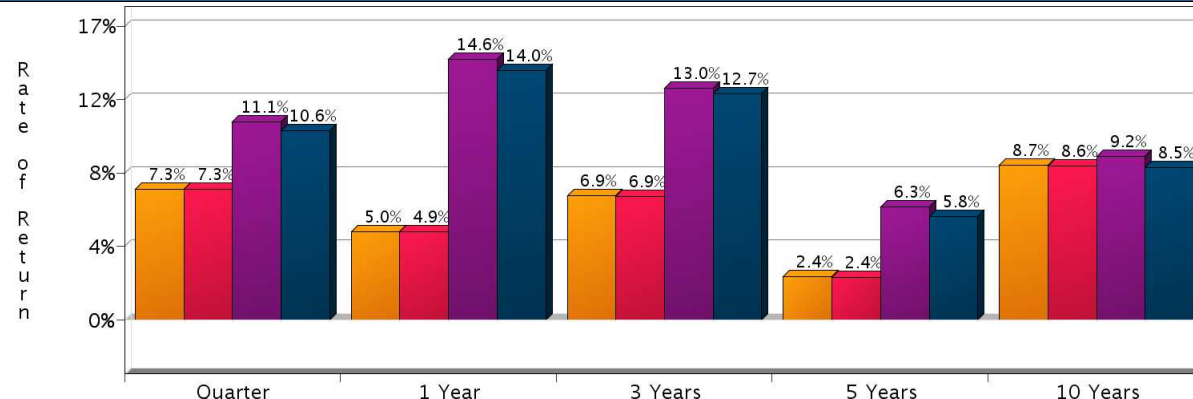
<sup>^</sup>As of 03/31/2010. Information as of 03/31/2013 is not yet available.<sup>†</sup>The P/E used here is calculated by the harmonic mean.<sup>\*</sup>Total may not equal 100% due to rounding.

## RISK/RETURN ANALYSIS – 5 YEARS ENDING 03/31/13



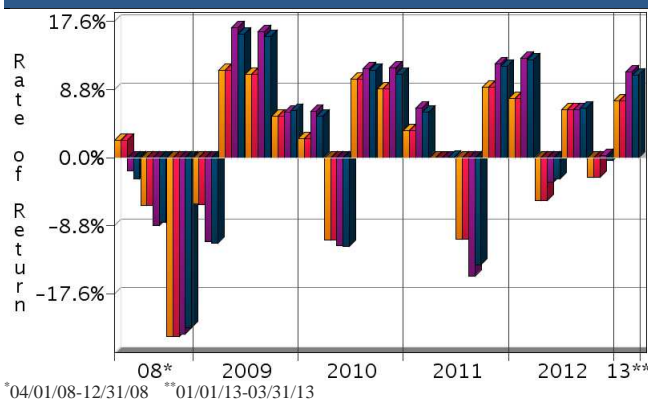
	STD	ROR
Tradition (Gross)	18.12	2.43
Tradition (Net)	18.12	2.39
Russell 3000	22.45	6.32
S&P 500	21.63	5.81
90-Day T-Bills	0.22	0.25

## AVERAGE ANNUAL TOTAL RETURN (%) – PERIODS ENDING 03/31/13



INVESTMENT RESULTS	Annual Rates of Return (%)										10 Year - Ending 03/31/13	
	2003	2004	2005	2006	2007	2008	2009	2010	2011	2012	Annualized	Std. Dev.
Tradition (Gross)	32.87	12.78	11.55	12.54	15.49	-32.64	22.03	9.87	1.01	5.24	8.65	15.00
Tradition (Net)	32.83	12.75	11.51	12.50	15.46	-32.66	22.00	9.84	0.98	5.21	8.62	15.00
Russell 3000	31.06	11.95	6.12	15.72	5.14	-37.31	28.34	16.93	1.02	16.43	9.16	17.64
S&P 500	28.68	10.88	4.91	15.80	5.49	-37.00	26.46	15.06	2.11	16.00	8.53	17.00

## RISK VOLATILITY



\*04/01/08-12/31/08 \*\*01/01/13-03/31/13

	Number Of	Up Qtrs.	Down Qtrs.
Tradition (Gross)		12	8
Tradition (Net)		12	8
Russell 3000		12	8
S&P 500		12	8

## PORTFOLIO'S QUARTERLY RETURNS (%)

	Quarter 1		Quarter 2		Quarter 3		Quarter 4	
	Gross	Net	Gross	Net	Gross	Net	Gross	Net
2003	-2.38	-2.39	15.64	15.63	3.30	3.29	13.94	13.93
2004	0.76	0.75	0.57	0.56	0.88	0.88	10.32	10.32
2005	1.80	1.79	2.68	2.67	5.45	5.44	1.20	1.19
2006	4.62	4.61	-0.23	-0.24	1.28	1.27	6.46	6.45
2007	1.29	1.28	8.77	8.76	4.82	4.81	0.01	0.00
2008	-8.59	-8.60	2.21	2.20	-6.20	-6.21	-23.14	-23.14
2009	-6.02	-6.02	11.24	11.24	10.78	10.77	5.36	5.36
2010	2.50	2.49	-10.64	-10.64	10.17	10.17	8.87	8.87
2011	3.47	3.46	-0.03	-0.04	-10.49	-10.50	9.09	9.08
2012	7.63	7.62	-5.53	-5.54	6.20	6.20	-2.54	-2.55
2013	7.33	7.33						

☒ Related
 ☐ Select UMA
PORTFOLIO'S RISK STATISTICS – PERIODS ENDING 03/31/13<sup>1 2</sup>

	3 Year	5 Year
Standard Deviation	15.27%	18.12%
Standard Deviation of Primary Benchmark	19.12%	22.45%
Sharpe Ratio	0.45	0.12
Sharpe Ratio of Primary Benchmark	0.67	0.27
Alpha	-3.15%	-2.75%
Beta	0.78	0.78
Downside Risk	5.46%	5.73%
R-Squared	0.96	0.95
Tracking Error	5.26%	6.45%
Information Ratio	-1.15	-0.60

PORTFOLIO DIVERSIFICATION - R<sup>2</sup> (10 YEARS ENDING 03/13)\*

	R <sup>2</sup>
Tradition vs. S&P 500	0.91
Tradition vs. Russell 3000	0.91

\*Statistics are calculated using gross of fee performance only.

1. Statistics are calculated using gross of fee performance only.
2. Russell 3000 was used as the primary benchmark and the 90-Day U.S. T-Bill Index as the risk-free benchmark.

See page 3 for a discussion of the sources of the performance data used to calculate the performance results and related analyses on page 2.

Past performance is no guarantee of future results. This profile is not complete without pages 3 and 4, which contain important notes, including disclosures about the composite, index descriptions and a glossary of terms. Information shown is as of March 31, 2013, unless otherwise noted. All data are subject to change.

## IMPORTANT NOTES AND DISCLOSURES

### COMPOSITE DISCLOSURES

**Past performance is no guarantee of future results. Actual individual account results may differ from the performance shown in this profile. There is no guarantee that this investment strategy will work under all market conditions. Do not use this profile as the sole basis for your investment decisions.**

Performance results in this profile are calculated assuming reinvestment of dividends and income. Returns for more than one year are annualized and based on quarterly data. Returns for periods of less than a calendar year show the total return for the period and are not annualized.

**Sources of Performance Results and Other Data:** The performance data and certain other information for this strategy (including the data on page 1 of this profile) reflect the investment manager's results in managing Morgan Stanley program accounts, or the investment manager's results in managing accounts and investment products, in the same or a substantially similar investment discipline. (For periods through June 2012, the Fiduciary Services program operated through two channels - Morgan Stanley channel and the Smith Barney channel - and any performance and other data relating to Fiduciary Services accounts shown here for these periods is calculated using accounts in only one of these channels.) This information for the investment manager is presented solely to provide information about accounts that were managed according to investment objectives and strategies the same or substantially similar to the corresponding investment discipline in the Select UMA program. Although the Fiduciary Services and Select UMA programs are both Morgan Stanley managed account programs, the performance results and other features of similar investment disciplines in the two programs may differ due to investment and operational differences. For example, the individual investment disciplines in the Select UMA accounts may contain fewer securities, which would lead to a more concentrated portfolio. The automatic rebalancing, wash sale loss and tax-harvesting features of the Select UMA program, which are not available in Fiduciary Services, also could cause differences in performance. Accordingly, the performance of the accounts in the Fiduciary Services program is not, and may differ significantly from, the performance of the accounts in the Select UMA program and should not be considered indicative of or a substitute for Select UMA performance. Similarly, performance results of the investment manager's composites may differ from those of Select UMA accounts managed in the same or a substantially similar investment discipline.

#### Related Performance:

Tradition Capital Management, LLC ("Tradition") All-Cap Core Long Equity performance represents all fully discretionary equity taxable and nontaxable wrap accounts managed by Tradition. The minimum account size for this composite is \$200,000. The composite is asset-weighted and consists of N/A accounts with a market value of N/A as of 03/31/13.

#### Select UMA Performance:

In this profile, the performance from 7/1/2011 through June 2012 consists of accounts in either the Morgan Stanley or the Smith Barney form of the Fiduciary Services program. From July 2012, performance consists of all Fiduciary Services accounts managed by the investment manager in the strategy, subject to any other limitations stated in this profile. Performance composites calculated by Morgan Stanley include all fee-paying portfolios with no investment restrictions. New accounts are included upon the first full quarter of performance. Terminated accounts are removed in the quarter in which they terminate. Performance is calculated on a total return basis and by asset weighting the individual portfolio returns using the beginning of period values.

**Gross Performance:** Tradition's gross results do not reflect a deduction of any investment advisory fees or program fees, charged by Tradition or Morgan Stanley, but are net of commissions charged on securities transactions.

**Net Performance for all Periods:** Net performance results reflect a deduction of 0.745% quarterly. This consists of three components: 0.625% maximum quarterly MS Advisory Fee and 0.03% maximum quarterly Program Overlay Fee (which, together cover the services provided by Morgan Stanley), plus 0.09% quarterly SMA Manager Fees (being the fee currently charged by Tradition to new clients for managing their assets in the Select UMA program). The SMA Manager Fees may differ from manager to manager, and managers may change their fee to new clients from time to time. If you select this manager for your account, check the SMA Manager Fees specified in the written client agreement, in case these have changed since you received this profile.

**Past performance is no guarantee of future results.** This profile is not complete without pages 3 and 4, which contain important notes, including disclosures about the composite, index descriptions and a glossary of terms. Information shown is as of March 31, 2013, unless otherwise noted. All data are subject to change.

Morgan Stanley program fees are usually deducted quarterly, and have a compounding effect on performance. The Morgan Stanley program fee, which differs among programs and clients, is described in the applicable Morgan Stanley ADV brochure, which is available at [www.morganstanley.com/ADV](http://www.morganstanley.com/ADV) or on request from your Financial Advisor or Private Wealth Advisor.

#### Focus List, Approved List, and Watch Status:

Consulting Group Investment Advisor Research ("CG IAR") uses two methods to evaluate investment products in applicable advisory programs. In general, strategies that have passed a more thorough evaluation may be placed on the "Focus List", while strategies that have passed through a different and less comprehensive evaluation process may be placed on the "Approved List". Sometimes an investment product may be evaluated using the Focus List process but then placed on the Approved List instead of the Focus List.

Investment products may move from the Focus List to the Approved List, or vice versa. CG IAR may also determine that an investment product no longer meets the criteria under either evaluation process and will no longer be recommended in investment advisory programs (in which case the investment product is given a "Not Approved" status).

CG IAR has a "Watch" policy and may describe a Focus List or Approved List investment product as being on "Watch" if CG IAR identifies specific areas that (a) merit further evaluation by CG IAR and (b) may, but are not certain to, result in the investment product becoming "Not Approved". The Watch period depends on the length of time needed for CG IAR to conduct its evaluation and for the investment manager to address any concerns. CG IAR may, but is not obligated to, note the Watch status in this report with a "W" or "Watch" on the cover page.

For more information on the Focus List, Approved List, and Watch processes, please see the applicable Morgan Stanley ADV brochure. Your Financial Advisor or Private Wealth Advisor can provide on request a copy of a paper entitled "Manager Research and Selection: A Disciplined Process".

### ADDITIONAL DISCLOSURES

The information about a representative account is for illustrative purposes only. Actual account holdings, performance and other data will vary depending on the size of an account, cash flows within an account, and restrictions on an account. Holdings are subject to change daily. The information in this profile is not a recommendation to buy, hold or sell securities.

Actual portfolio statistics may vary from target portfolio characteristics.

The investment manager may use the same or substantially similar investment strategies, and may hold similar portfolios of investments, in other portfolios or products it manages (including mutual funds). These may be available at Morgan Stanley or elsewhere, and may cost an investor more or less than this strategy in Morgan Stanley's Select UMA program.

The portfolio may, at times, invest in exchange-traded funds (ETFs), which are a form of equity security in seeking to maintain continued full exposure to the broad equity market.

Morgan Stanley investment advisory programs may require a minimum asset level and, depending on your specific investment objectives and financial position, may not be suitable for you. Investment advisory program accounts are opened pursuant to a written client agreement.

The investment manager acts independently of, and is not an affiliate of, Morgan Stanley Smith Barney LLC.

Morgan Stanley Smith Barney LLC Member SIPC.

## INDEX DESCRIPTIONS

## 90-Day T-Bills

The 90-Day Treasury Bill is a short-term obligation issued by the United States government. T-bills are purchased at a discount to the full face value, and the investor receives the full value when they mature. The difference of 'discount' is the interest earned. T-bills are issued in denominations of \$10,000 (auction) and \$1,000 increments thereafter.

## Russell 3000

The Russell 3000 Index measures the performance of the 3,000 largest U.S. companies based on total market capitalization, which represents approximately 98% of the investable U.S. equity market.

## S&amp;P 500

The S&P 500 has been widely regarded as the best single gauge of the large cap U.S. equities market since the index was first published in 1957. The index has over US\$ 5.58 trillion benchmarked, with index assets comprising approximately US\$ 1.31 trillion of this total. The index includes 500 leading companies in leading industries of the U.S. economy, capturing 75% coverage of U.S. equities. This index includes dividend reinvestment.

**Indices are unmanaged and have no expenses. You cannot invest directly in an index.**

## GLOSSARY OF TERMS

**Alpha** is a mathematical estimate of risk-adjusted return expected from a portfolio above and beyond the benchmark return at any point in time.

**American Depositary Receipts (ADRs)** are receipts for shares of a foreign-based corporation held in the vault of a U.S. bank.

**Average Portfolio Beta** is a measure of the sensitivity of a benchmark or portfolio's rates of return to changes against a market return. The market return is the S&P 500 Index. It is the coefficient measuring a stock or a portfolio's relative volatility.

**Capitalization** is defined as the following: Mega (Above \$100 billion), Large (\$12 to \$100 billion), Medium (\$2.5 - \$12 billion), Small (\$.50 - \$2.5 billion) and Micro (below \$.50 billion).

**Downside Risk** is a measure of the risk associated with achieving a specific target return. This statistic separates portfolio volatility into downside risk and upside uncertainty. The downside considers all returns below the target return, while the upside considers all returns equal to or above the target return.

**Duration** is a measure of price sensitivity expressed in years.

**Information Ratio** is a measure of the investment manager's skill to add active value against a given benchmark relative to how stable that active return has been. Essentially, the information ratio explains how significant a manager's alpha is. Therefore, the higher the information ratio, the more significant the alpha.

**Investment Grade Bonds** are those rated by Standard & Poor's AAA (highest rated), AA, A or BBB (or equivalent rating by other rating agencies or, in the case of securities not rated, by the investment manager).

**Price/Earnings Ratio (P/E Ratio)** shows the multiple of earnings at which a stock sells. Determined by dividing current stock price by current earnings per share (adjusted for stock splits). Earnings per share for the P/E ratio are determined by dividing earnings for past 12 months by the number of common shares outstanding. The P/E ratio shown here is calculated by the harmonic mean.

**R<sup>2</sup> (R-Squared)/Portfolio Diversification** indicates the proportion of a security's total variance that is benchmark-related or is explained by variations in the benchmark.

**Sharpe Ratio** measures the efficiency, or excess return per unit of volatility, of a manager's returns. It evaluates managers' performance on a volatility-adjusted basis.

**Standard Deviation** is a statistical measure of historical variability or spread of returns around a mathematical average return that was produced by the investment manager over a given measurement period. The higher the standard deviation, the greater the variability in the investment manager's returns relative to its average return.

**Tracking Error** represents the standard deviation of the difference between the performance of the investment strategy and the benchmark. This provides a historical measure of the variability of the investment strategy's returns relative to its benchmark.