

Smead US Value Strategy (SMD-1)

Style: US Large Cap Value **GIMA Status:** Approved **Program Inception:** 09/19/2024 **Strategy Minimum:** \$25,000

EXECUTIVE SUMMARY

To help you better understand the performance results of third-party investment manager strategies within our Select UMA Program, we are including additional information within manager profiles that may inform your decision to invest in this strategy:

- The performance results displayed in this profile may include a composite of Morgan Stanley accounts enrolled in the strategy. These are **unshaded** in the Investment Results and Portfolio Quarterly Returns sections of the profile with the Select UMA label.
- The results also display the performance of the manager's own composite of accounts invested in its version of the investment strategy, prior to the strategy's inception in the Select UMA program. These are shaded in **grey** and labeled Manager. While this performance is relevant, it does not reflect the role that Morgan Stanley plays in delivering this strategy, which is reflected in the unshaded portion of the Investment Results and Portfolio Quarterly Returns sections of the profile. Morgan Stanley works in tandem, with the manager, to deliver this strategy to its clients. For this reason, Morgan Stanley does not display the manager's own composite of accounts invested in its version of the investment strategy beyond the transition month. As a result, the manager's results and the strategy's results may differ, as discussed in further detail below.
- If the transition month between the manager's results and the strategy's results occurs in the middle of a quarter, that quarter or year will be shaded **blue** in the Investment Results and Portfolio Quarterly Returns sections of the profile and labeled Transition.

The manager exercises discretion in selecting securities for your account, but differences between the manager's prior gross results and the strategy's ongoing gross results may arise from variations in who executes the strategy or how it is implemented:

- Some managers may deliver a model portfolio to Morgan Stanley, which may ultimately be responsible for executing those investment decisions.
- In some cases, the manager may act as an "executing manager," which means it implements its investment decisions and transactions directly instead of delivering instructions to Morgan Stanley.
- The manager's prior performance results are based on accounts that do not participate in the Select UMA program, with investment and operational differences such as account size and/or level of customization.
- There may be other reasons why the performance results differ from those of individual Select UMA accounts managed in the same or a substantially similar investment strategy. For example, Morgan Stanley may deviate from strategy models when applying client-requested restrictions.

If you have any questions about any of the information included in this profile, please contact your Morgan Stanley team.

Past performance is not a guarantee of future results. Actual individual account results may differ from the performance shown in this profile. There is no guarantee that any investment strategy will achieve its intended results under all market conditions. Do not rely upon this profile as the sole basis for your investment decisions.

For MAPS Third Party Model Portfolios, 'Manager' illustrated performance is that of the Model Portfolio Provider.

Smead US Value Strategy (SMD-1)

Style: US Large Cap Value **GIMA Status:** Approved **Program Inception:** 09/19/2024 **Strategy Minimum:** \$25,000

Strategy Overview

We advise investors that fear stock market failure through a low turnover, differentiated value discipline seeking wonderful companies to build wealth. We are value buyers who want to get a bargain for the companies we are purchasing. However, we don't want to just find average companies, we are looking for companies that we believe are wonderful. This is most commonly tied to certain attributes like balance sheet quality or operating company consistency. This is what other managers may deem as "quality". Things that make a company "wonderful," under our definition, would be large insider ownership and trusting insider purchases for the timing of ownership. We run low turnover because we know that frictional costs do harm to portfolio results, but we also want to be "business owners" in each of our portfolio companies and allow the beauty of compounding to take place. We are differentiated both in the concentration of the portfolio and the contrarian thinking that the discipline requires of us as investors.

Target Portfolio Characteristics

Description	Value
Number of security holdings:	25 to 30
P/E ratio:	Below the S&P 500
Cash level over market cycle:	0 to 5%
Risk (standard deviation):	Above the S&P 500
Average turnover rate:	15 to 25%
Use ADRs:	0 to 10%
Capitalization:	Mega, Large and Medium companies
Eligible Investments:	Individual Stocks

Manager's Investment Process

- Over the entire holding period, each holding is required to have the following five traits: Meet an economic need; Boast a strong competitive advantage (wide moats or barriers to entry); Have a long history of profitability and strong operating metrics; Generate high levels of free cash flow; Be available at a low price in relation to its intrinsic value
- Over the entire holding period, the following traits are favored but not required: Management's history of shareholder friendliness; Strong balance sheet; Strong insider ownership (preferably with recent purchases)

Portfolio Manager Details ¹

Manager Name	Term
BILL SMEAD	January 2008 - Present
COLE SMEAD	August 2014 - Present

¹ For more information on Portfolio Managers, please refer to this manager's Form ADV www.morganstanley.com/wealth-investmentsolutions/advbrochures.

Smead US Value Strategy (SMD-1)

Style: US Large Cap Value **GIMA Status:** Approved **Program Inception:** 09/19/2024 **Strategy Minimum:** \$25,000

Portfolio Statistics

	12/24		06/24
	Smead Cap	Index***	Smead Cap
Number of security holdings	29	869	27
Dividend Yield	2.4%	2.1%	2.2%
Distribution Rate	0.8%	—	—
Wtd avg P/E ratio ¹	16.00x	19.20x	14.61x
Wtd avg portfolio beta	1.00	—	0.99
Mega capitalization ⁺	33.8%	46.6%	34.1%
Large capitalization ⁺	47.4%	44.3%	46.2%
Medium capitalization ⁺	18.9%	8.9%	13.9%
Small capitalization ⁺	0.0%	0.2%	0.0%
Micro capitalization ⁺	0.0%	0.0%	0.0%

Portfolio's Top Five Security Holdings

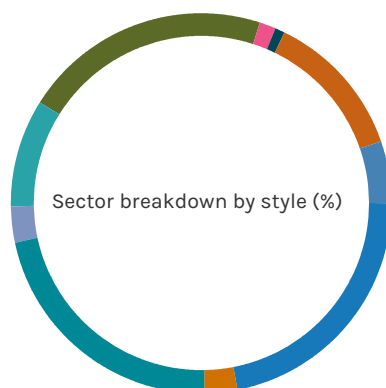
Product Name	Weight (%)
Simon Property Group Inc	6.5
American Express Co	5.9
Macerich Co/The	5.9
Lennar Corp	5.2
DR Horton Inc	5.1

¹The P/E used here is calculated by the harmonic mean.

*Total may not equal 100% due to rounding.

***Index : Russell 1000 VI

Portfolio's Equity Sector Weightings ⁺



Sector Breakdown	12/24		06/24
	Smead Cap	Index***	Smead Cap
Energy	21.82	6.72	23.30
Materials	0.00	4.17	0.00
Industrials	2.79	14.75	2.70
Consumer Discretionary	22.15	6.21	22.76
Consumer Staples	2.98	7.90	2.44
Health Care	9.27	14.19	10.84
Financials	20.88	23.07	22.12
Information Technology	1.52	9.29	2.01
Communication Services	0.91	4.36	0.77
Utilities	0.00	4.63	0.00
Real Estate/REITs	12.39	4.70	10.13
Cash/Cash Equivalents	5.28	0.00	0.00

Portfolio's Allocation History (%) ⁺

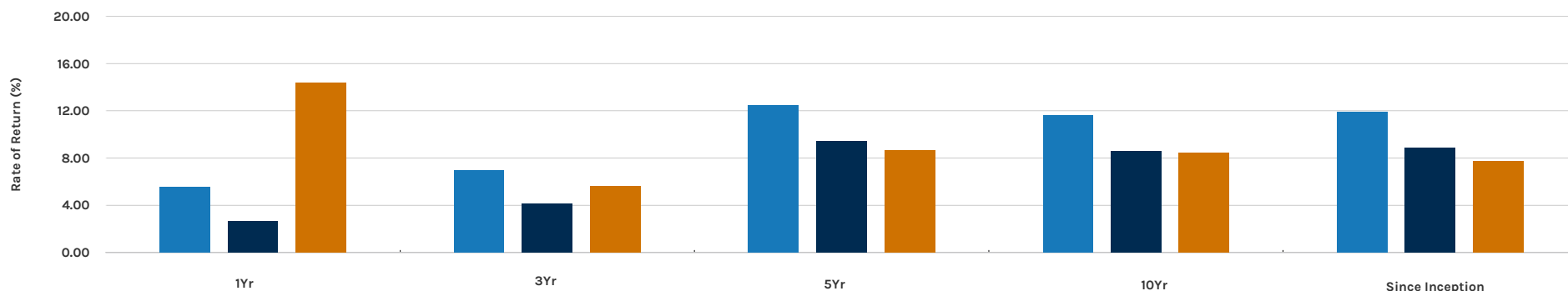
	12/24	09/24	06/24	03/24
U.S. Stocks	91	95	94	95
Non-U.S. Stocks	3	0	0	0
Cash/Cash Equivalents	5	5	6	5

Smead US Value Strategy (SMD-1)

Style: US Large Cap Value **GIMA Status:** Approved **Program Inception:** 09/19/2024 **Strategy Minimum:** \$25,000

Strategy Inception Date: 03/2008 ² **Morgan Stanley Composite Date:** -

Average Annual Total Return (%) - Periods Ending 12/31/24



	1yr	3yr	5yr	10yr	Inception
Smead Cap (Gross)	5.54	6.97	12.46	11.60	11.91
Smead Cap (Net)	2.64	4.11	9.46	8.61	8.91
Primary Benchmark	14.37	5.63	8.68	8.48	7.76

Calendar-Year Performance (%) ¹

	2024	2023	2022	2021	2020	2019	2018	2017	2016	2015
Smead Cap (Gross)	5.54	18.11	-1.80	43.10	2.67	27.58	-3.60	26.36	4.51	2.59
Smead Cap (Net)	2.64	14.98	-4.38	39.35	-0.07	24.21	-6.18	22.97	1.63	-0.15
Primary Benchmark	14.37	11.46	-7.54	25.16	2.80	26.54	-8.27	13.66	17.33	-3.84

Portfolio's Quarterly Returns (%)

	2024	2023	2022	2021	2020	2019	2018	2017	2016	2015
Quarter 1										
Gross	10.92	0.28	0.66	20.12	-31.92	8.38	-3.69	7.44	-3.05	2.15
Net	10.15	-0.36	-0.03	19.35	-32.41	7.68	-4.32	6.72	-3.76	1.42
Quarter 2										
Gross	-4.36	3.46	-13.12	9.27	22.18	7.18	2.66	3.26	-0.39	1.29
Net	-5.06	2.76	-13.76	8.54	21.46	6.48	1.96	2.55	-1.06	0.59
Quarter 3										
Gross	5.22	-0.72	-1.54	0.76	9.47	1.45	7.96	5.15	3.60	-5.73
Net	4.53	-1.37	-2.16	0.07	8.76	0.76	7.25	4.44	2.91	-6.36
Quarter 4										
Gross	-5.45	14.67	14.03	8.19	12.76	8.26	-9.69	8.32	4.46	5.19
Net	-6.11	13.85	13.34	7.49	11.93	7.52	-10.33	7.58	3.71	4.52

■ Manager ■ Transition □ Select UMA

1. Russell 1000 VI was used as the Primary Benchmark, the 90-Day T-Bills Index as the Risk-free Benchmark

2. For more information on these dates please see the Glossary of Terms section

See important notes and disclosures pages for a discussion of the sources of the performance data used to calculate the performance results and related analyses shown above.

Smead US Value Strategy (SMD-1)

Style: US Large Cap Value **GIMA Status:** Approved **Program Inception:** 09/19/2024 **Strategy Minimum:** \$25,000

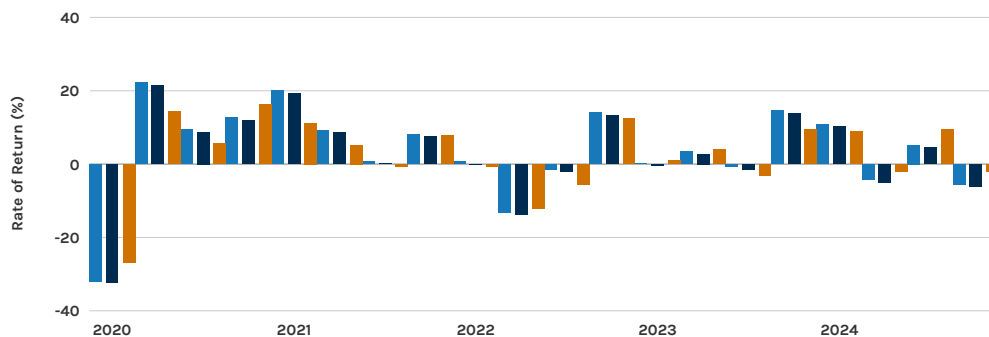
Risk Considerations

Investing in securities entails risks, including: Equity portfolios are subject to the basic stock market risk that a particular security, or securities in general, may decrease in value. Equity securities' prices may fluctuate in response to specific situations for each company, industry, market conditions and general economic environment. Strategies that invest a large percentage of assets in only one industry sector (or in only a few sectors) are more vulnerable to price fluctuation than portfolios that diversify among a broad range of sectors. When investing in value securities, the market may not necessarily have the same value assessment as the manager, and, therefore, the performance of the securities may decline. Value investing involves the risk that the market may not recognize that securities are undervalued and they may not appreciate as anticipated. Value investing does not guarantee a profit or eliminate risk. Companies paying dividends can reduce or cut payouts at any time. Growth investing does not guarantee a profit or eliminate risk. The stocks of these companies can have relatively high valuations. Because of these high valuations, an investment in a growth stock can be more risky than an investment in a company with more modest growth expectations. If a strategy expects to hold a concentrated portfolio of a limited number of securities, it should be noted that a decline in the value of these investments would cause the portfolio's overall value to decline to a greater degree than that of a less concentrated portfolio. To the extent that this manager employs ESG practices, ESG investments in a portfolio may experience performance that is lower or higher than a portfolio not employing such practices. Please refer to the Disclosure section for additional ESG considerations. To the extent this manager invests in international securities, investors should consider that investing in foreign markets entails greater risks than those normally associated with domestic markets such as foreign political, currency, economic and market risks. These risks are magnified in countries with emerging markets, since these countries may have relatively unstable governments and less established markets and economics.

Portfolio's Risk Statistics - Periods Ending 12/31/24 ^{1 2}

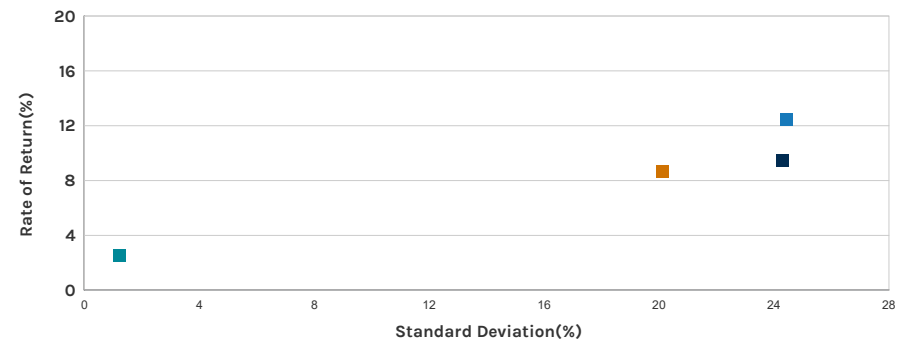
	3 Year	5 Year
Standard Deviation	16.48%	24.44%
Standard Deviation of Primary Benchmark	14.77%	20.12%
Sharpe Ratio	0.18	0.41
Sharpe Ratio of Primary Benchmark	0.11	0.31
Alpha	1.38%	3.18%
Beta	1.05	1.17
Downside Risk	3.63%	3.99%
R-Squared	0.87	0.92
Tracking Error	5.79%	7.72%
Information Ratio	0.23	0.49

Rate of Return (%) ²



1. Statistics are calculated using gross of fee performance only.
2. Russell 1000 VI was used as the Primary Benchmark, the 90-Day T-Bills Index as the Risk-free Benchmark

Risk/Return Analysis ² - 5 Years Ending 12/31/24



	STD	ROR
■ Smead Cap (Gross)	24.44	12.46
■ Smead Cap (Net)	24.31	9.46
■ Primary Benchmark	20.12	8.68
■ Risk-free Benchmark	1.22	2.54

Important Notes and Disclosures

Composite Disclosures

The disclosures provided below apply to performance information in this profile, if any. Past performance is not a guarantee of future results. Actual individual account results may differ from the performance shown in this profile. There is no guarantee that this investment strategy will achieve its intended results under all market conditions. Do not rely upon this profile as the sole basis for your investment decisions.

Performance results in this profile are calculated assuming reinvestment of dividends and income. Returns for more than one calendar year are annualized and based on quarterly data. Returns for periods of less than a calendar year show the total return for the period and are not annualized. No representation is being made that any portfolio will or is likely to achieve profits or losses similar to those shown. Returns will fluctuate and an investment upon redemption may be worth more or less than its original value. All returns, even those for tax efficient strategies, are shown pre-tax.

Sources of Performance Results and Other Data: The performance data and certain other information for this strategy (including the data on page 1 of this profile) may include one or more of the following: (i) the performance results of a composite of Morgan Stanley accounts managed by the third party investment manager, (ii) the performance results for accounts and investment products managed by the third party investment manager, in the same or a substantially similar investment strategy outside of the applicable Morgan Stanley program, and/or (iii) in the case of Model Portfolio Strategies, the Model Portfolio Provider's results in managing accounts outside of the Morgan Stanley Select UMA program prior to Model Portfolio Strategy's inception in the Morgan Stanley Select UMA program. For periods through June 2012, the Fiduciary Services program operated through two channels the Morgan Stanley channel and the Smith Barney channel and any performance and other data relating to Fiduciary Services accounts shown here for these periods is calculated using accounts in only one of these channels.) Please note that the Fiduciary Services program was closed on January 2, 2018. Although the Fiduciary Services and Select UMA programs are both Morgan Stanley managed account programs, the performance results and other features of similar investment strategies in the two programs may differ due to investment and operational differences. Performance in one program is not indicative of potential performance in the other. For example, the individual investment strategies in Select UMA program accounts may contain fewer securities, which would lead to a more concentrated portfolio. The automatic rebalancing, wash sale loss and tax harvesting features of the Select UMA program, which are not available in Fiduciary Services, also could cause differences in performance. In addition, any performance results included in this profile that are based on a third party investment manager's accounts that are not part of the Morgan Stanley program accounts or institutional accounts that are part of the Model Portfolio strategy may differ due to investment and operational differences as well. As such, performance results of the third party investment manager's composites and the third party Model Portfolio Strategies may differ from those of Select UMA accounts managed in the same or a substantially similar investment strategy. For example, in the case of Model Portfolio Strategies, Morgan Stanley, as the investment manager, may deviate from the Third Party Model Portfolios.

Manager Performance:

Effective January 2022, the composite changed its name from Capital Appreciation to Smead US Value Strategy. Firm: Smead Capital Management ("SCM") is an independently owned investment advisor that is not affiliated with any parent organization. Policies for valuing portfolios, calculating performance and preparing compliant presentations are available upon request. Basis of Presentation: SCM claims compliance with the Global Investment Performance Standards (GIPS®) and has prepared and presented this report in compliance with the GIPS standards. SCM has been independently verified for the periods July 1, 2007 to December 31, 2023. Verification assesses whether (1) the firm has complied with all the composite construction requirements of the GIPS standards on a firm-wide basis and (2) the firm's policies and procedures are designed to calculate and present performance in compliance with the GIPS standards. The Smead US Value Composite has been examined for the periods March 1, 2008 to December 31, 2023. The verification and examination reports are available upon request. Composite Criteria: The Smead US Value Composite includes all fully discretionary accounts invested in equities of U.S. companies and American Depository Receipts (ADRs) whose objective is long-term capital appreciation with a relatively concentrated portfolio, which may typically own 25 to 30 different issuers. The top 10 holdings may constitute greater than 50% of portfolio assets. These accounts are primarily concerned with appreciation, not high dividend yield. Accounts managed to the strategy will primarily invest in companies with market capitalization within the range of the Russell 1000® Value Index. Composite Creation: This composite was created in March 2008. A complete list of composite descriptions is available upon request. Valuations are computed and performance is reported in U.S. dollars. Past performance is not indicative of future results. As with any investment vehicle there is always the potential for gains as well as the possibility of losses. On December 31, 2008, 48% of the composite is composed of non-fee paying portfolios. Comparison with Market Index: The benchmark is the Russell 1000 Value Index. The Russell 1000 Value Index measures the performance of the large-cap value segment of the U.S. equity universe. It includes those Russell 1000 companies with lower price-to-book ratios and lower expected growth values. The Russell1000 Value Index is constructed to provide a comprehensive and unbiased barometer for the large-cap value segment. The returns for the index do not include any transaction costs, management fees or other costs. Benchmark returns are not covered by the report of independent verifiers. Fees Calculation: Gross-of-fees returns are presented before management and custodial fees but after all trading expenses. Composite and benchmark returns are presented net of non-reclaimable withholding taxes and reflect the reinvestment of dividends and other earnings. Net-of-fees returns are calculated by deducting the actual management fees paid each quarter. The standard advisory fee is 0.85% on the market value. Fees may be negotiated in lieu of the standard fee schedule. Internal Dispersion: Internal dispersion is calculated using the asset-weighted standard deviation of annual gross returns of those portfolios that were included in the composite for the entire year. For years where less than six portfolios were included in the composite for the full year, the measure is not statistically representative and is not presented. Standard Deviation: The three-year annualized standard deviation measures the variability of the composite and the benchmark returns over the preceding 36-month period. It is not required to be presented for annual periods prior to 2011 or when a full three years of performance is not yet available.

Morgan Stanley Performance:

Gross Performance: Smead Cap's Model Portfolio Provider gross performance results do not reflect the deduction of any investment advisory fees or program fees charged by the Model Portfolio Provider or Morgan Stanley. In the case of Fund Performance, the gross results also do not reflect the deduction of any fees and expenses internal to the mutual fund responsible for generating the performance, commissions charged on securities transactions, and other expenses attributable to such mutual funds. The deduction of such fees and expenses, and the compounding effect of such fees over time, will reduce returns over time.

Net Performance for all Periods: Net performance results reflect a deduction from gross performance of two components: 0.50% maximum quarterly (2.0% maximum annual) MS Advisory Fee plus the quarterly SMA Manager Fee currently charged by this investment manager to new clients for managing their assets in this strategy in the Select UMA program. The SMA Manager Fees range from 0% to 0.1875% per Quarter (0% to 0.75% per year) and may differ from manager to manager, and from investment returns details in this report. Historical net fees reflect the maximum Advisory Fee as of October 1, 2018. The Morgan Stanley program fee, which differs among programs and clients, is described in the applicable Morgan Stanley ADV brochure, which is available at www.morganstanley.com/ADV or on request from your Financial Advisor. Morgan Stanley program fees are typically calculated and deducted on a monthly basis and have a compounding effect on performance.

Focus List, Approved List, and Watch Status:

Global Investment Manager Analysis ("GIMA") uses two methods to evaluate investment products in applicable advisory programs. In general, strategies that have passed a more thorough evaluation may be placed on the "Focus List", while strategies that have passed through a different and less comprehensive evaluation process may be placed on the "Approved List". Sometimes an investment product may be evaluated using the Focus List process but then placed on the Approved List instead of the Focus List.

Investment products may move from the Focus List to the Approved List, or vice versa. GIMA may also determine that an investment product no longer meets the criteria under either evaluation process and will no longer be recommended in investment advisory programs (in which case the investment product is given a "Not Approved" status).

GIMA has a "Watch" policy and may describe a Focus List or Approved List investment product as being on "Watch" if GIMA identifies specific areas that (a) merit further evaluation by GIMA and (b) may, but are not certain to, result in the investment product becoming "Not Approved". The Watch period depends on the length of time needed for GIMA to conduct its evaluation and for the investment manager to address any concerns. GIMA may, but is not obligated to, note the Watch status in this report with a "W" or "Watch" on the cover page.

For more information on the Focus List, Approved List, and Watch processes, please see the applicable Morgan Stanley ADV brochure (www.ms.com/adv). Your Financial Advisor or Private Wealth Advisor can provide on request a copy of a paper entitled "GIMA: At A Glance".

Additional Disclosures

Actual account holdings, performance and other data will vary depending on the size of an account, cash flows within an account, and restrictions on an account. Holdings are subject to change daily. The information in this profile is not a recommendation to buy, hold or sell securities.

Actual portfolio statistics may vary from target portfolio characteristics.

If this strategy includes eligible mutual funds or exchange traded funds in addition to individual stocks or bonds, the portfolio characteristics within this profile reflect the funds' underlying holdings.

The Top Five Portfolio Holdings listed herein are provided for informational purposes only and should not be deemed to be a recommendation to purchase or sell the securities mentioned. Portfolio characteristics in this profile are based on an allocation weight in the strategy model. There are no guarantees that any of the securities mentioned will be held in a client's account. It should not be assumed that the securities transactions or holdings discussed were or will prove to be profitable.

The Model Portfolio Provider or Investment Manager may use the same or substantially similar investment strategies, and may hold similar portfolios of investments, in other portfolios or products it manages (including mutual funds). These may be available at Morgan Stanley or elsewhere, and may cost an investor more or less than this strategy in Morgan Stanley's Select UMA program.

Generally, investment advisory accounts are subject to an annual asset-based fee (the "Fee") which is payable monthly in advance (some account types may be billed differently). In general, the Fee covers Morgan Stanley investment advisory services, custody of securities with Morgan Stanley, trade execution with or through Morgan Stanley or its affiliates, as well as compensation to any Morgan Stanley Financial Advisor. In addition, each account that is invested in a program that is eligible to purchase certain investment products, such as mutual funds, will also pay a Platform Fee (which is subject to a Platform Fee offset) as described in the applicable ADV brochure. Accounts invested in the Select UMA program may also pay a separate Sub-Manager fee, if applicable. If your account is invested in mutual funds or exchange traded funds (collectively "funds"), you will pay the fees and expenses of any funds in which your account is invested. Fees and expenses are charged directly to the pool of assets the fund invests in and are reflected in each fund's share price. These fees and expenses are an additional cost to you and would not be included in the Fee amount in your account statements. The advisory program you choose is described in the applicable Morgan Stanley Smith Barney LLC ADV Brochure, available at www.morganstanley.com/ADV.

Morgan Stanley or Executing Sub-Managers, as applicable, in some of Morgan Stanley's Separately Managed Account ("SMA") programs may affect transactions through broker-dealers other than Morgan Stanley or our affiliates. In such instance, you may be assessed additional costs by the other firm in addition to the Morgan Stanley and Sub-Manager fees. Those costs will be included in the net price of the security, not separately reported on trade confirmations or account statements. Certain sub-managers have historically directed most, if not all, of their trades to outside firms. Information provided by sub-managers concerning trade execution away from Morgan Stanley is summarized at: www.morganstanley.com/wealth/investmentsolutions/pdfs/adv/sotresponse.pdf. For more information on trading and costs, please refer to the ADV Brochure for your program(s), available at www.morganstanley.com/ADV, or contact your Financial Advisor/Private Wealth Advisor.

Morgan Stanley investment advisory programs may require a minimum asset level and, depending on your specific investment objectives and financial position, may not be suitable for you. Investment advisory program accounts are opened pursuant to a written client agreement.

Consulting Group's unified managed account program, Select UMA, allows Financial Advisors to combine separately managed accounts (SMAs), mutual funds and exchange-traded funds (ETFs) within a single investment advisory account for clients.

Certain SMA strategies, ETFs and Mutual Funds that are sponsored, managed or sub advised by, or receive other services from, MSSB or our affiliates, including but not limited to Morgan Stanley Investment Management ("MSIM") and Eaton Vance Management ("EVM"), Boston Management and Research, Calvert Research and Management, Atlanta Capital Management Company and Parametric Portfolio Associates, may be included in a client's account. Morgan Stanley Global Investment Manager Analysis ("GIMA") evaluates certain investment products for the purposes of some but not all of Morgan Stanley Smith Barney LLC's investment advisory programs. Please see the applicable Form ADV, which can be accessed at www.morganstanley.com/adv, for information about affiliated investment products that are not reviewed or evaluated by GIMA, as well as additional disclosures and conflicts of interest applicable to affiliated products, that could be included in a strategy.

No obligation to notify

Morgan Stanley has no obligation to notify you when information in this profile changes.

Sources of information

Material in this profile has been obtained from sources that we believe to be reliable, but we do not guarantee its accuracy, completeness or timeliness. Third party data providers make no warranties or representations relating to the accuracy, completeness or timeliness of the data they provide and are not liable for any damages relating to this data.

No tax advice

Morgan Stanley and its affiliates do not render advice on legal, tax and/or tax accounting matters to clients. Each client should consult his/her personal tax and/or legal advisor to learn about any potential tax or other implications that may result from acting on a particular recommendation.

Not an ERISA fiduciary

Morgan Stanley is not acting as a fiduciary under either the Employee Retirement Income Security Act of 1974, as amended, or under section 4975 of the Internal Revenue Code of 1986, as amended, in providing the information in this profile.

©2024 Morgan Stanley Smith Barney LLC Member SIPC.

Environmental, Social and Governance ("ESG") investments in a portfolio may experience performance that is lower or higher than a portfolio not employing such practices. Portfolios with ESG restrictions and strategies as well as ESG investments may not be able to take advantage of the same opportunities or market trends as portfolios where ESG criteria is not applied. There are inconsistent ESG definitions and criteria within the industry, as well as multiple ESG ratings providers that provide ESG ratings of the same subject companies and/or securities that vary among the providers. Certain issuers of investments may have differing and inconsistent views concerning ESG criteria where the ESG claims made in offering documents or other literature may overstate ESG impact. ESG designations are as of the date of this material, and no assurance is provided that the underlying assets have maintained or will maintain and such designation or any stated ESG compliance. As a result, it is difficult to compare ESG investment products or to evaluate an ESG investment product in comparison to one that does not focus on ESG. Investors should also independently consider whether the ESG investment product meets their own ESG objectives or criteria.

There is no assurance that an ESG investing strategy or techniques employed will be successful. Past performance is not a guarantee or a dependable measure of future results.

An investment in an exchange-traded fund involves risks similar to those of investing in a portfolio of equity securities traded on exchange in the relevant securities market, such as market fluctuations caused by such factors as economic and political developments, changes in interest rates and perceived trends in stock prices. The investment return and principal value of ETF investments will fluctuate, so that an investor's ETF shares, if or when sold, may be worth more or less than the original cost.

Index Descriptions

90-Day T-Bills

The 90-Day Treasury Bill is a short-term obligation issued by the United States government. T-bills are purchased at a discount to the full face value, and the investor receives the full value when they mature. The difference of discount is the interest earned. T-bills are issued in denominations of \$10,000 auction and \$1,000 increments thereafter.

Russell 1000 VI

The Russell 1000® Value Index measures the performance of the large-cap value segment of the US equity universe. It includes those Russell 1000 companies with relatively lower price-to-book ratios, lower I/B/E/S forecast medium term (2 year) growth and lower sales per share historical growth (5 years). The Russell 1000® Value Index is constructed to provide a comprehensive and unbiased barometer for the large-cap value segment. The index is completely reconstituted annually to ensure new and growing equities are included and that the represented companies continue to reflect value characteristics.

S&P 500

The S&P 500® is widely regarded as the best single gauge of large-cap U.S. equities. The index includes 500 leading companies and covers approximately 80% of available market capitalization.

Indices are unmanaged and have no expenses. You cannot invest directly in an index. Depending on your account holdings and investment objectives, indices included may not be an appropriate measure for comparison purposes and are presented for illustration only. The strategy shown does not necessarily seek to track the index, may not be restricted to securities in the index and may be more volatile than the index. The benchmark presented may differ from the benchmark assigned by the manager.

Glossary Of Terms

Alpha is a mathematical estimate of risk-adjusted return expected from a portfolio above and beyond the benchmark return at any point in time.

American Depositary Receipts (ADRs) are receipts for shares of a foreign-based corporation held in the vault of a U.S. bank.

Average Portfolio Beta is a measure of the sensitivity of a benchmark or portfolio's rates of return to changes against a market return. The market return is the S&P 500 Index. It is the coefficient measuring a stock or a portfolio's relative volatility.

Beta is a measure of the sensitivity of a portfolio's rates of return to changes in the market return. It is the coefficient measuring a stock or a portfolio's relative volatility.

Bond Discount is the amount by which the market price of a bond is lower than its principal amount due at maturity.

Bottom-Up Stock Selection Emphasis primarily on individual stock selection. Considerations of economic and industry factors are of secondary importance in the investment decision-making process.

Call Protection is a feature of some bonds that prohibits the issuer from buying it back for a specified period of time. The period during which the bond is protected is known as the deferment period. Bonds with call protection are sometimes referred to as deferred callable bonds.

Capitalization is defined as the following: Mega (Above \$100 billion), Large (\$12 to \$100 billion), Medium (\$2.5 - \$12 billion), Small (\$.50 - \$2.5 billion) and Micro (below \$.50 billion).

Coupon-Interest Payment is received by a bondholder from the date of issuance until the date of maturity of a bond.

Distribution Rate is defined as the most recent distribution paid, annualized, and then divided by the current market price. Distribution rate may consist of investment income, short-term capital gains, long-term capital gains, and /or returns of capital.

Dividend a portion of a company's profit paid to common and preferred shareholders.

Dividend Yield annual dividend per share divided by price per share. Dividend Yield for the portfolio is a weighted average of the results for the individual stocks in the portfolio.

Downside Risk is a measure of the risk associated with achieving a specific target return. This statistic separates portfolio volatility into downside risk and upside uncertainty. The downside considers all returns below the target return, while the upside considers all returns equal to or above the target return.

Duration is a measure of price sensitivity expressed in years.

Exchange-Traded Funds (ETFs) are a form of a security seeking to maintain continued full exposure to broad markets or segments of markets.

High Grade Corporate Bonds corporate bonds from issuers with credit ratings of AA or AAA.

Information Ratio is a measure of the investment manager's skill to add active value against a given benchmark relative to how stable that active return has been. Essentially, the information ratio explains how significant a manager's alpha is. Therefore, the higher the information ratio, the more significant the alpha.

Investment Grade Bonds are those rated by Standard & Poor's AAA (highest rated), AA, A or BBB (or equivalent rating by other rating agencies or, in the case of securities not rated, by the investment manager).

Morgan Stanley Composite Start Date is the date when Morgan Stanley began to calculate the composite performance of the strategy using qualifying advisory accounts.

Preferred/Hybrid Securities are stocks that evidence ownership in a corporation and pay a fixed or variable stream of dividends. Preferred stocks have a preference over common stocks in the event of the liquidation of an issuer and usually do not carry voting rights. Preferred stocks have many of the characteristics of both equity securities and fixed-income securities.

Premium Bond is a bond trading higher than the face value of the bond.

Program Inception Date is the date that the strategy was launched in the Select UMA program.

Price/Book Ratio (P/B) weighted average of the stocks' price divided by book value per share. Book value per share is defined as common equity, including intangibles, divided by shares outstanding times the adjustment factor.

Price/Cash Flow Ratio a ratio used to compare a company's market value to its cash flow. It is calculated by dividing the company's market cap by the company' operating cash flow in the most recent fiscal year (or the most recent four fiscal quarters); or, equivalently, divide the per-share stock price by the per-share operating cash flow.

Price/Earnings Ratio (P/E Ratio) shows the multiple of earnings at which a stock sells. Determined by dividing current stock price by current earnings per share (adjusted for stock splits). Earnings per share for the P/E ratio are determined by dividing earnings for past 12 months by the number of common shares outstanding. The P/E ratio shown here is calculated by the harmonic mean.

Price/Sales Ratio determined by dividing current stock price by revenue per share (adjusted for stock splits). Revenue per share for the P/S ratio is determined by dividing revenue for past 12 months by number of shares outstanding.

R2 (R-Squared)/Portfolio Diversification indicates the proportion of a security's total variance that is benchmark-related or is explained by variations in the benchmark.

Sharpe Ratio measures the efficiency, or excess return per unit of volatility, of a manager's returns. It evaluates managers' performance on a volatility-adjusted basis.

Standard Deviation is a statistical measure of historical variability or spread of returns around a mathematical average return that was produced by the investment manager over a given measurement period. The higher the standard deviation, the greater the variability in the investment manager's returns relative to its average return.

Strategy Inception Date is the date that the Manager started to calculate the performance of the strategy.

Top-Down/Economic Analysis Emphasis primarily on macroeconomic trends as opposed to bottom-up stock selection.

Tracking Error represents the standard deviation of the difference between the performance of the investment strategy and the benchmark. This provides a historical measure of the variability of the investment strategy's returns relative to its benchmark.

U.S. Treasury Bonds a marketable, fixed interest U.S. government debt security with a maturity of more than 10 years. Treasury bonds make interest payments semi-annually and the income that holders receive is only taxed at the federal level.

Volatility a measure of risk based on the standard deviation of the asset return. Volatility is a variable that appears in option pricing formulas, where it denotes the volatility of the underlying asset return from now to the expiration of the option. There are volatility indexes. Such as a scale of 1-9; a higher rating means higher risk.

CRC #: 3865138

Approval Date: 09/2024