

## PIMCO

840 Newport Center Drive  
Newport Beach, California 92660

## PRODUCT OVERVIEW

Originally founded in 1971, Pacific Investment Mgmt. Co ("PIMCO") is a global investments solutions provider. The PIMCO Total Return for Managed Accounts strategy is a true core bond strategy, focusing on a diversified portfolio of high-quality intermediate-term U.S. bonds. PIMCO seeks to maximize total return (income plus capital appreciation), consistent with preservation of capital and prudent investment management. PIMCO employs a variety of value-added strategies across the global bond markets to increase total return potential and reduce overall risk. A typical portfolio will hold 3 to 15 securities (this number may vary from account to account), which represent approximately 55% of the portfolio. The remaining 45% will be invested in a combination of two PIMCO proprietary commingled vehicles. The average portfolio duration of the portfolio normally varies within two years (plus or minus) of the duration of the Barclays U.S. Aggregate Bond Index.

## TARGET PORTFOLIO CHARACTERISTICS

Number of bond holdings:	3 to 15
Average credit quality:	A to A
Average maturity:	5.82
Average duration:	2.0 to 2.0 years
Average coupon:	3.40
Average turnover rate:	150 to 200%

## MANAGER'S INVESTMENT PROCESS

- PIMCO's decision-making process begins with its annual Secular Forum, during which the firm formulates its outlook for global bond markets over the next three to five years. Topics monitored include monetary and fiscal policy, inflation, demographics, technology, productivity trends, global trade, etc.
- PIMCO investment professionals also meet quarterly in Economic Forums to evaluate growth and inflation over the business cycle horizon of the next 6-12 months.
- Following our Secular and Economic Forums, PIMCO's Investment Committee (IC) works on a consensus basis to develop major strategies that serve as a model for all portfolios. The IC makes use of the top-down outlook provided by the Forums as well as bottom-up input from specialists who focus on various fixed income sectors and the regional portfolio committees. The IC sets targets for portfolio characteristics such as duration, yield curve exposure, convexity, sector concentration and credit quality and ensures themes are consistently applied across all portfolios.
- Our portfolio management group, through the incorporation of the IC's model portfolio characteristics, will then construct individual portfolios.
- The portfolio will invest approximately 55% in individual high quality U.S. bonds with the remaining assets in PIMCO proprietary commingled vehicles.

## RISK CONSIDERATIONS

Investing in securities entails risks, including: Fixed Income securities may be sensitive to changes in prevailing interest rates. When rates rise the value generally declines. There is no assurance that the private guarantors or insurers will meet their obligations. U.S. Treasuries are guaranteed by the U.S. government and, if held to maturity, offer a fixed rate of return and fixed principal value. Growth investing does not guarantee a profit or eliminate risk. The stocks of these companies can have relatively high valuations. Because of these high valuations, an investment in a growth stock can be more risky than an investment in a company with more modest growth expectations. Value investing does not guarantee a profit or eliminate risk. Not all companies whose stocks are considered to be value stocks are able to turn their business around or successfully employ corrective strategies which would result in stock prices that do not rise as initially expected.

## PORTFOLIO'S MATURITY STRUCTURE(%) \*\*

	06/14	03/14	12/13	09/13
0 to 2 Years	-9.70	-3.00	6.00	0.52
2 to 4 Years	35.60	27.00	21.00	20.45
4 to 6 Years	40.60	52.00	25.00	38.18
6 to 8 Years	12.70	10.00	25.00	10.22
8 to 12 Years	18.90	14.00	18.00	27.54
12 to 17 Years	4.30	4.00	9.00	5.10
Over 17 Years	-2.40	-4.00	-4.00	-2.01
Cash/Cash Equivalents	0.00	0.00	0.00	0.00

Style: Core Plus Fixed Income  
Firm Assets Under Management: \$1,553.7 billion  
Firm Strategy Assets Under Management: \$12.7 billion  
Year Founded: 1971  
Professional Staff: 731  
Firm Ownership: Allianz Asset Management  
CG IAR Status: Approved

## PORTFOLIO STATISTICS\*

	-----06/14-----	12/13
	PIMCO	BC Aggregate
Number of bond holdings	13	28
Average credit quality	AA	AA
Average maturity	5.82 yrs.	5.5 yrs.
Average duration	4.96 yrs.	5.1 yrs.
Average coupon	3.4%	3.2%

## FIXED INCOME SECTOR DISTRIBUTION(%) \*\*

	06/14	03/14	12/13	09/13
U.S. Treasury	56.00	45.00	35.00	39.00
Mortgage-Backed Securities	29.00	29.00	32.00	33.00
Emerging Debt	9.00	7.00	8.00	9.00
Financials <sup>1</sup>	7.00	8.00	9.00	7.00
Municipals	7.00	6.00	7.00	5.00
Foreign Bonds	4.00	6.00	2.00	3.00
Industrials <sup>1</sup>	2.00	3.00	3.00	2.00
High Yield Corporates	3.00	2.00	2.00	2.00
Utilities <sup>1</sup>	2.00	1.00	1.00	1.00
U.S. Agencies	1.00	1.00	1.00	1.00
Cash/Cash Equivalents	-15.00	-8.00	0.00	-2.00
Collateralized Mortgage Obligations	0.00	0.00	0.00	0.00
Yankees	0.00	0.00	0.00	0.00
Asset-Backed Securities	1.00	0.00	0.00	0.00
Swaps and Liquid Rates	-6.00	0.00	0.00	0.00

## PORTFOLIO'S CREDIT QUALITY STRUCTURE(%) \*\*

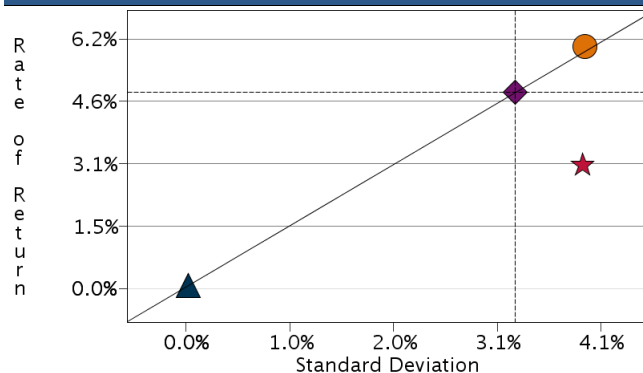
Investment Grade	06/14	03/14	12/13	09/13
AAA	68.00	71.00	73.00	0.00
AA	5.00	5.00	5.00	0.00
A	9.00	9.00	9.00	0.00
BBB	11.00	11.00	9.00	0.00
Below Investment Grade				
BB	3.00	2.00	2.00	0.00
B	2.00	1.00	1.00	0.00
Below B	2.00	1.00	1.00	0.00
Not Rated	0.00	0.00	0.00	0.00
Cash/Cash Equivalents	0.00	0.00	0.00	0.00

<sup>1</sup>High Grade Corporates

\*\*Total may not equal 100% due to rounding.

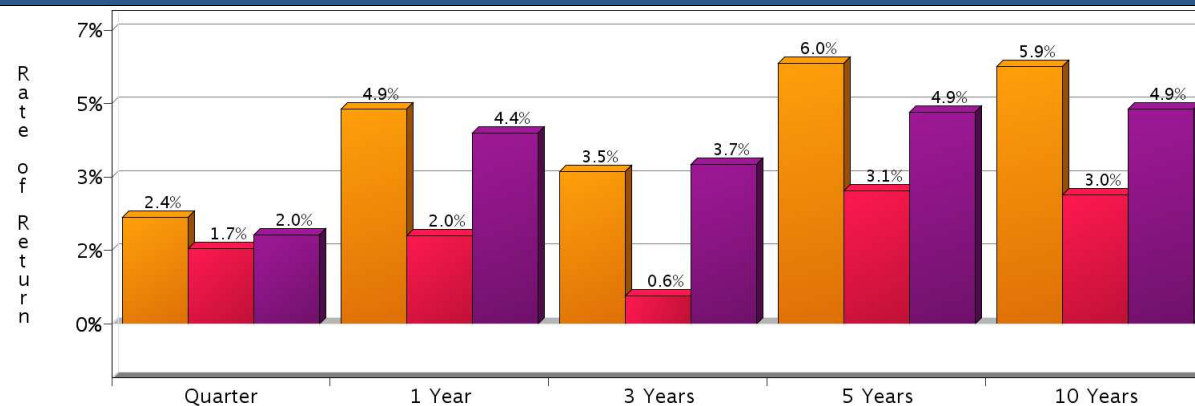
\*As represented by Pacific Investment Mgmt. Co.

## RISK/RETURN ANALYSIS – 5 YEARS ENDING 06/30/14



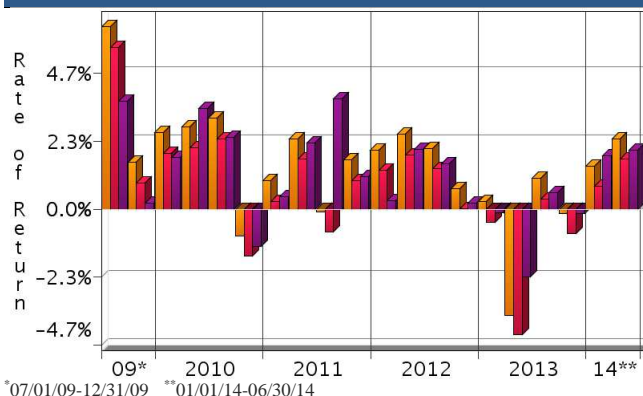
	STD	ROR
● PIMCO (Gross)	3.93	5.98
★ PIMCO (Net)	3.90	3.05
◆ BC Aggregate	3.24	4.85
▲ 90-Day T-Bills	0.02	0.08

## AVERAGE ANNUAL TOTAL RETURN (%) – PERIODS ENDING 06/30/14



INVESTMENT RESULTS	Annual Rates of Return (%)										10 Year - Ending 06/30/14	
	2004	2005	2006	2007	2008	2009	2010	2011	2012	2013	Annualized	Std. Dev.
PIMCO (Gross)	4.49	2.75	5.02	9.72	0.87	15.45	7.90	5.11	7.67	-2.52	5.90	3.98
PIMCO (Net)	1.57	-0.12	2.11	6.69	-1.95	12.27	4.91	2.21	4.70	-5.23	2.97	3.95
BC Aggregate	4.34	2.43	4.33	6.97	5.24	5.93	6.54	7.84	4.22	-2.02	4.93	3.30

## RISK VOLATILITY



	Number Of	Up Qtrs.	Down Qtrs.
■ PIMCO (Gross)	16	16	4
■ PIMCO (Net)	15	15	5
■ BC Aggregate	16	16	4

## PORTFOLIO'S QUARTERLY RETURNS (%)

	Quarter 1		Quarter 2		Quarter 3		Quarter 4	
	Gross	Net	Gross	Net	Gross	Net	Gross	Net
2004	2.50	1.79	-1.99	-2.70	3.24	2.52	0.74	0.03
2005	0.30	-0.40	2.83	2.11	-0.21	-0.92	-0.17	-0.88
2006	0.10	-0.60	0.14	-0.56	3.72	3.00	1.00	0.30
2007	1.78	1.07	-0.87	-1.56	4.52	3.79	4.05	3.32
2008	2.59	1.89	-1.11	-1.80	-2.65	-3.34	2.12	1.38
2009	1.73	1.01	5.05	4.33	6.32	5.58	1.61	0.91
2010	2.66	1.94	2.86	2.13	3.14	2.43	-0.93	-1.62
2011	0.98	0.27	2.44	1.74	-0.09	-0.78	1.70	0.99
2012	2.05	1.35	2.59	1.87	2.10	1.39	0.73	0.02
2013	0.27	-0.44	-3.67	-4.34	1.08	0.37	-0.15	-0.85
2014	1.50	0.79	2.44	1.73				

■ Related      □ Fiduciary Services

PORTFOLIO'S RISK STATISTICS – PERIODS ENDING 06/30/14<sup>1,2</sup>

	3 Year	5 Year
Standard Deviation	3.43%	3.93%
Standard Deviation of Primary Benchmark	3.08%	3.24%
Sharpe Ratio	1.00	1.50
Sharpe Ratio of Primary Benchmark	1.17	1.48
Alpha	0.94%	1.49%
Beta	0.70	0.92
Downside Risk	2.50%	1.93%
R-Squared	0.39	0.58
Tracking Error	2.83%	2.56%
Information Ratio	-0.06	0.44

PORTFOLIO DIVERSIFICATION - R<sup>2</sup> (10 YEARS ENDING 06/14)\*

	R <sup>2</sup>
PIMCO vs. BC Aggregate	0.64

\*Statistics are calculated using gross of fee performance only.

1. Statistics are calculated using gross of fee performance only.

2. BC Aggregate was used as the primary benchmark and the 90-Day U.S. T-Bill Index as the risk-free benchmark.

See page 3 for a discussion of the sources of the performance data used to calculate the performance results and related analyses on page 2.

Past performance is no guarantee of future results. This profile is not complete without pages 3 and 4, which contain important notes, including disclosures about the composite, index descriptions and a glossary of terms. Information shown is as of June 30, 2014, unless otherwise noted. All data are subject to change.

## IMPORTANT NOTES AND DISCLOSURES

### COMPOSITE DISCLOSURES

**Past performance is no guarantee of future results. Actual individual account results may differ from the performance shown in this profile. There is no guarantee that this investment strategy will work under all market conditions. Do not use this profile as the sole basis for your investment decisions.**

Performance results in this profile are calculated assuming reinvestment of dividends and income. Returns for more than one year are annualized and based on quarterly data. Returns for periods of less than a calendar year show the total return for the period and are not annualized.

#### Related Performance (Manager's Composite):

For periods before the date on which Morgan Stanley begins to calculate an applicable performance composite for actual Morgan Stanley program accounts, the performance composite and certain other information for this strategy (including the data on page 1 of this profile) are based on the investment manager's own composite and data. This composite includes accounts managed by the investment manager according to the same or a substantially similar investment strategy. To provide maximum information to you, the investment manager's own composite is linked to the Morgan Stanley composite to create a simulated continuous track record of performance information for the investment strategy. The investment manager's composite may include separately managed accounts, institutional accounts and/or mutual funds. Performance and other data for the investment managers composite may vary from that of Morgan Stanley accounts due to differences such as the availability and weighting of securities, trading implementation or client objectives. Morgan Stanley does not verify composite and other data provided by the investment manager and therefore does not guarantee its accuracy. Some of the accounts in the investment managers composite may have invested in the initial public offering ("IPO") market, whereas accounts held in Morgan Stanley programs do not do so. Since investment managers may use different methods of selecting accounts to be included in their composites and for calculating performance, returns of different investment managers may not be comparable.

#### Related Performance:

The performance composite performance prior to 10/1/2003, reflects the results of PIMCO's composite of fully discretionary accounts and includes reinvestment of dividends, capital gains and interest. It is believed to be accurate but has not been independently verified by Legg Mason Wood Walker, Inc. Investment performance is net of all commissions, but not custodial expenses or advisory fees. Performance results will be reduced by advisory fees and any other expenses incurred in the management of the account. As fees are paid quarterly the compounding effect will increase the impact of fees. Beginning 10/1/2003, performance figures represent an asset-weighted composite of all wrap-fee accounts managed by Allianz Global Investors Managed Accounts LLC utilizing their Total Return Managed Accounts style through Legg Mason Wood Walker's Advantage Manager Program. Accounts begin in the composite with the first full month they are under management. When a portfolio is terminated the performance of the portfolio is included in the composite with the first full month they are under management. When a portfolio is terminated the performance of the portfolio is included in the composite until the last full month the account was under management. The composite information was independently created and calculated by Legg Mason Wood Walker, Inc. Performance figures are presented gross of fees, include the reinvestment of all dividends, interest, and capital gains and are computed before taxes and are computed on a trade date basis. FISH shares may not be purchased or held outside of a wrap fee program such as FS (Fiduciary Services). When you terminate your investment in the portfolio, such termination will result in the automatic redemption of all FISH shares held by you or on your behalf. The liquidation of these FISH shares may have tax consequences to you. By selecting this portfolio, you agree to the automatic liquidation of all FISH shares upon termination of your account. Allianz Global Investors Managed Accounts LLC (AGIMA) may restrict, from accounts under its management, securities of certain companies in which AGIMA or an affiliated entity has an interest. All portfolio positions subject to restriction, client driven or otherwise, may be maintained in cash.

#### Fiduciary Services Performance:

In this profile, the performance from 1/1/2006 through June 2012 consists of accounts in either the Morgan Stanley or the Smith Barney form of the Fiduciary Services program. From July 2012, performance consists of all Fiduciary Services accounts managed by the investment manager in the strategy, subject to any other limitations stated in this profile. Performance composites calculated by Morgan Stanley include all fee-paying portfolios with no investment

restrictions. New accounts are included upon the first full quarter of performance. Terminated accounts are removed in the quarter in which they terminate. Performance is calculated on a total return basis and by asset weighting the individual portfolio returns using the beginning of period values.

**Equity Account (Gross):** PIMCO's gross results do not reflect a deduction of the investment advisory fees charged by PIMCO, or program fees, if any, but are net of commissions charged on securities transactions.

**Net Performance for all Periods:** To demonstrate the effect of Morgan Stanley's fees that would have applied if you had invested in the investment manager strategy's through the Fiduciary Services program, the net results for all periods are calculated by deducting a quarterly fee of 0.705% (equivalent to an annual fee of 2.82%).

Morgan Stanley program fees are usually deducted quarterly, and have a compounding effect on performance. The Morgan Stanley program fee, which differs among programs and clients, is described in the applicable Morgan Stanley ADV brochure, which is available at [www.morganstanley.com/ADV](http://www.morganstanley.com/ADV) or on request from your Financial Advisor or Private Wealth Advisor.

Fiduciary Services is a separately managed account program sponsored by Morgan Stanley. For periods for which sufficient data is available, the profile shows a composite of client accounts managed by the investment manager in the Fiduciary Services program. Through June 2012, Morgan Stanley offered the Fiduciary Services program through two channels - the Morgan Stanley channel and the Smith Barney channel. For periods through June 2012, any composite based on Fiduciary Services accounts consists of Fiduciary Services accounts managed by the manager in the strategy in either the Morgan Stanley channel or the Smith Barney channel. If the strategy or similar strategies were available in both the Morgan Stanley and Smith Barney forms of the program, through June 2012 this profile presents the composite for the strategy that is closest to the strategy currently offered in the Fiduciary Series program. If both strategies were equally close, this profile shows through June 2012 the longer of the two composites. From July 2012, any composite based on Fiduciary Services accounts consists of all Fiduciary Services accounts managed by the manager in the strategy, subject to any other limitations stated in this profile. Performance and other data for Fiduciary Services composites may differ from composites in other Morgan Stanley programs, and performance and data for composites in one channel may differ from composites in the other channel, due to differences such as the availability and weighting of securities, trading implementation or client objectives.

#### Focus List, Approved List, and Watch Status:

Consulting Group Investment Advisor Research ("CG IAR") uses two methods to evaluate investment products in applicable advisory programs. In general, strategies that have passed a more thorough evaluation may be placed on the "Focus List", while strategies that have passed through a different and less comprehensive evaluation process may be placed on the "Approved List". Sometimes an investment product may be evaluated using the Focus List process but then placed on the Approved List instead of the Focus List.

Investment products may move from the Focus List to the Approved List, or vice versa. CG IAR may also determine that an investment product no longer meets the criteria under either evaluation process and will no longer be recommended in investment advisory programs (in which case the investment product is given a "Not Approved" status).

CG IAR has a "Watch" policy and may describe a Focus List or Approved List investment product as being on "Watch" if CG IAR identifies specific areas that (a) merit further evaluation by CG IAR and (b) may, but are not certain to, result in the investment product becoming "Not Approved". The Watch period depends on the length of time needed for CG IAR to conduct its evaluation and for the investment manager to address any concerns. CG IAR may, but is not obligated to, note the Watch status in this report with a "W" or "Watch" on the cover page.

For more information on the Focus List, Approved List, and Watch processes, please see the applicable Morgan Stanley ADV brochure. Your Financial Advisor or Private Wealth Advisor can provide on request a copy of a paper entitled "Manager Research and Selection: A Disciplined Process".

### ADDITIONAL DISCLOSURES

The information about a representative account is for illustrative purposes only. Actual account holdings, performance and other data will vary depending on the size of an account, cash flows within an account, and restrictions on an

account. Holdings are subject to change daily. The information in this profile is not a recommendation to buy, hold or sell securities.

Actual portfolio statistics may vary from target portfolio characteristics.

The investment manager may use the same or substantially similar investment strategies, and may hold similar portfolios of investments, in other portfolios or products it manages (including mutual funds). These may be available at Morgan Stanley or elsewhere, and may cost an investor more or less than this strategy in the Morgan Stanley Fiduciary Services program.

The portfolio may, at times, invest in exchange-traded funds (ETFs), which are a form of equity security in seeking to maintain continued full exposure to the broad equity market.

Morgan Stanley investment advisory programs may require a minimum asset level and, depending on your specific investment objectives and financial position, may not be suitable for you. Investment advisory program accounts are opened pursuant to a written client agreement.

The investment manager acts independently of, and is not an affiliate of, Morgan Stanley Smith Barney LLC.

Diversification does not guarantee a profit or protect against a loss.

#### *No obligation to notify*

Morgan Stanley has no obligation to notify you when information in this profile changes.

#### *Sources of information*

Material in this profile has been obtained from sources that we believe to be reliable, but we do not guarantee its accuracy, completeness or timeliness. Third party data providers make no warranties or representations relating to the accuracy, completeness or timeliness of the data they provide and are not liable for any damages relating to this data.

#### *No tax advice*

Morgan Stanley and its affiliates do not render advice on legal, tax and/or tax accounting matters to clients. Each client should consult his/her personal tax and/or legal advisor to learn about any potential tax or other implications that may result from acting on a particular recommendation.

#### *Not an ERISA fiduciary*

Morgan Stanley is not acting as a fiduciary under either the Employee Retirement Income Security Act of 1974, as amended, or under section 4975 of the Internal Revenue Code of 1986, as amended, in providing the information in this profile.

©2014 Morgan Stanley Smith Barney LLC Member SIPC.

## INDEX DESCRIPTIONS

### 90-Day T-Bills

The 90-Day Treasury Bill is a short-term obligation issued by the United States government. T-bills are purchased at a discount to the full face value, and the investor receives the full value when they mature. The difference of discount is the interest earned. T-bills are issued in denominations of \$10,000 auction and \$1,000 increments thereafter.

### BC Aggregate

The Barclays Aggregate Index is composed of securities from the Barclays Government/Corporate Bond Index, Mortgage-Backed Securities Index and Asset-Backed Securities Index.

### S&P 500

The S&P 500 has been widely regarded as the best single gauge of the large cap U.S. equities market since the index was first published in 1957. The index has over \$5.58 trillion benchmarked, with index assets comprising approximately \$1.31 trillion of this total. The index includes 500 leading companies in leading industries of the U.S. economy, capturing 75% coverage of U.S. equities. This index includes dividend reinvestment.

**Indices are unmanaged and have no expenses. You cannot invest directly in an index.**

## GLOSSARY OF TERMS

**Alpha** is a mathematical estimate of risk-adjusted return expected from a portfolio above and beyond the benchmark return at any point in time.

**American Depositary Receipts (ADRs)** are receipts for shares of a foreign-based corporation held in the vault of a U.S. bank.

**Average Portfolio Beta** is a measure of the sensitivity of a benchmark or portfolio's rates of return to changes against a market return. The market return is the S&P 500 Index. It is the coefficient measuring a stock or a portfolio's relative volatility.

**Beta** is a measure of the sensitivity of a portfolio's rates of return to changes in the market return. It is the coefficient measuring a stock or a portfolio's relative volatility.

**Bottom-Up Stock Selection** Emphasis primarily on individual stock selection. Considerations of economic and industry factors are of secondary importance in the investment decision-making process.

**Capitalization** is defined as the following: Mega (Above \$100 billion), Large (\$12 to \$100 billion), Medium (\$2.5 - \$12 billion), Small (\$.50 - \$2.5 billion) and Micro (below \$.50 billion).

**Dividend** a portion of a company's profit paid to common and preferred shareholders.

**Downside Risk** is a measure of the risk associated with achieving a specific target return. This statistic separates portfolio volatility into downside risk and upside uncertainty. The downside considers all returns below the target return, while the upside considers all returns equal to or above the target return.

**Duration** is a measure of price sensitivity expressed in years.

**High Grade Corporate Bonds** corporate bonds from issuers with credit ratings of AA or AAA.

**Information Ratio** is a measure of the investment manager's skill to add active value against a given benchmark relative to how stable that active return has been. Essentially, the information ratio explains how significant a manager's alpha is. Therefore, the higher the information ratio, the more significant the alpha.

**Investment Grade Bonds** are those rated by Standard & Poor's AAA (highest rated), AA, A or BBB (or equivalent rating by other rating agencies or, in the case of securities not rated, by the investment manager).

**Price/Book Ratio (P/B)** weighted average of the stocks' price divided by book value per share. Book value per share is defined as common equity, including intangibles, divided by shares outstanding times the adjustment factor.

**Price/Cash Flow Ratio** a ratio used to compare a company's market value to its cash flow. It is calculated by dividing the company's market cap by the company's operating cash flow in the most recent fiscal year (or the most recent four fiscal quarters); or, equivalently, divide the per-share stock price by the per-share operating cash flow.

**Price/Earnings Ratio (P/E Ratio)** shows the multiple of earnings at which a stock sells. Determined by dividing current stock price by current earnings per share (adjusted for stock splits). Earnings per share for the P/E ratio are determined by dividing earnings for past 12 months by the number of common shares outstanding. The P/E ratio shown here is calculated by the harmonic mean.

**Price/Sales Ratio** determined by dividing current stock price by revenue per share (adjusted for stock splits). Revenue per share for the P/S ratio is determined by dividing revenue for past 12 months by number of shares outstanding.

**R<sup>2</sup> (R-Squared)/Portfolio Diversification** indicates the proportion of a security's total variance that is benchmark-related or is explained by variations in the benchmark.

**Sharpe Ratio** measures the efficiency, or excess return per unit of volatility, of a manager's returns. It evaluates managers' performance on a volatility-adjusted basis.

**Standard Deviation** is a statistical measure of historical variability or spread of returns around a mathematical average return that was produced by the investment manager over a given measurement period. The higher the standard deviation, the greater the variability in the investment manager's returns relative to its average return.

**Top-Down/Economic Analysis** Emphasis primarily on macroeconomic trends as opposed to bottom-up stock selection.

**Tracking Error** represents the standard deviation of the difference between the performance of the investment strategy and the benchmark. This provides a historical measure of the variability of the investment strategy's returns relative to its benchmark.

**U.S. Treasury Bonds** a marketable, fixed interest U.S. government debt security with a maturity of more than 10 years. Treasury bonds make interest payments semi-annually and the income that holders receive is only taxed at the federal level.

**Volatility** a measure of risk based on the standard deviation of the asset return. Volatility is a variable that appears in option pricing formulas, where it denotes the volatility of the underlying asset return from now to the expiration of the option. There are volatility indexes. Such as a scale of 1-9; a higher rating means higher risk.